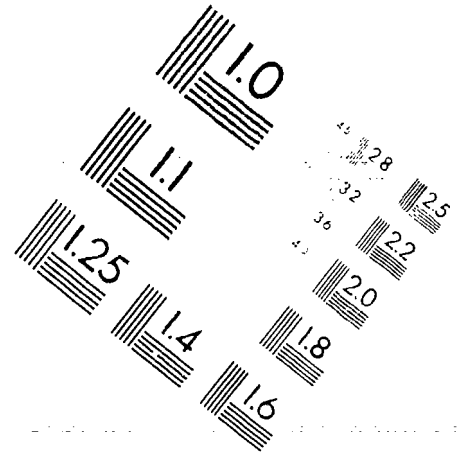
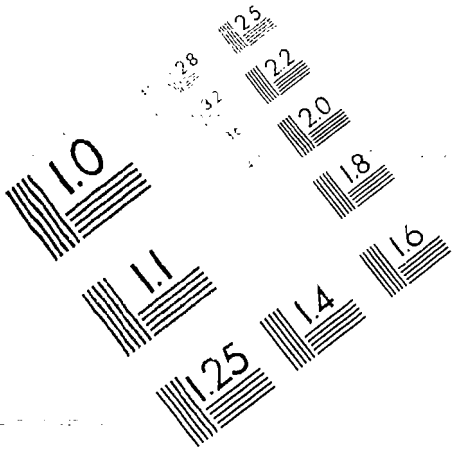




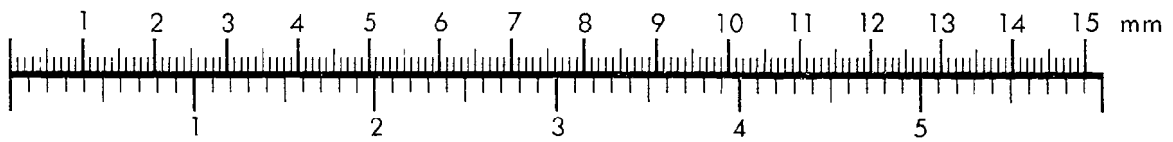
**AIM**

**Association for Information and Image Management**

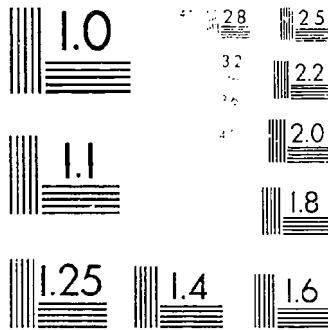
1100 Wayne Avenue, Suite 1100  
Silver Spring, Maryland 20910  
301 587 8202



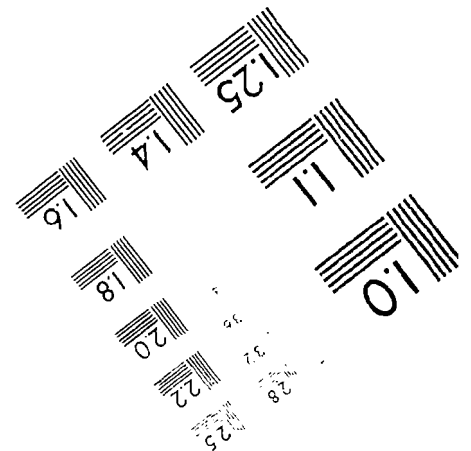
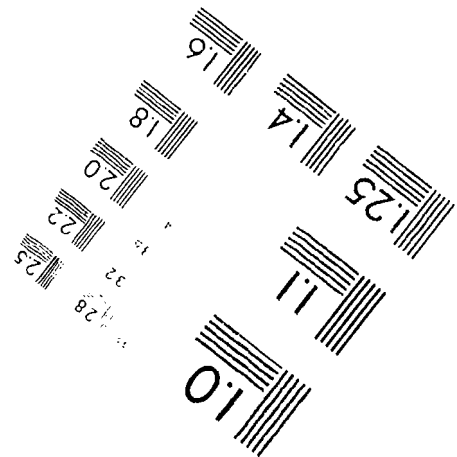
Centimeter



Inches



MANUFACTURED TO AIM STANDARDS  
BY APPLIED IMAGE, INC.



DOCUMENT RESUME

ED 353 650

EA 024 575

AUTHOR Gipe, Linda, Comp.  
 TITLE School Improvement Network Directory: 1992 Supplement.  
 INSTITUTION Northwest Regional Educational Lab., Portland, OR. School Improvement Program.  
 SPONS AGENCY Office of Educational Research and Improvement (ED), Washington, DC.  
 PUB DATE Sep 92  
 CONTRACT RP91002001  
 NOTE 112p.; For 1991 directory, see ED 339 118.  
 AVAILABLE FROM Northwest Regional Educational Laboratory, 101 S.W. Main Street, Suite 500, Portland, OR 97204.  
 PUB TYPE Reference Materials - Directories/Catalogs (132)  
 EDRS PRICE MF01/PC05 Plus Postage.  
 DESCRIPTORS \*Academic Achievement; \*Educational Improvement; \*Educational Objectives; Elementary Secondary Education; \*Excellence in Education; Institutional Characteristics; Program Implementation; \*School Based Management

ABSTRACT

This directory supplement provides information about 211 schools (in British Columbia, Department of Defense Dependent Schools--Panama, Colorado, Florida, Hawaii, Idaho, Kansas, Mississippi, Montana, Oregon, Pacific Jurisdictions, Washington, and Wyoming) working with the school-based management process Onward to Excellence (OTE), which seeks to improve student performance. This 1992 supplement contains information only about those schools not profiled in previous editions of the directory (1988-91). Questionnaires were sent to 550 participating schools not included in the 1991 directory, of which a total of 211 responded: 125 elementary schools, 29 middle/junior high schools, 33 high schools, and 24 multilevel schools. School entries are listed according to education level. Each school entry contains information about the school contact person, the OTE status of use, school level, number of students, area (e.g., small city, suburban), student population (composition, free/reduced lunch, mobility), school improvement goals and their progress status, and practice clusters. Most schools have goals that focus on improving student academic achievement, and approximately one-half of the schools report no current formal assessment in use. The schools are indexed by effective schools research practice clusters, practice clusters selected by schools, and goal and content areas selected by schools. (LMI)

\*\*\*\*\*  
 \* Reproductions supplied by EDRS are the best that can be made \*  
 \* from the original document. \*  
 \*\*\*\*\*

ED 353 650

**SCHOOL IMPROVEMENT  
NETWORK DIRECTORY  
1992 SUPPLEMENT**

**Compiled by:  
Linda Gipe**

U.S. DEPARTMENT OF EDUCATION  
Office of Educational Research and Improvement  
EDUCATIONAL RESOURCES INFORMATION  
CENTER (ERIC)

This document has been reproduced as  
received from the person or organization  
originating it.

Minor changes have been made to improve  
reproduction quality.

• Points of view or opinions stated in this docu-  
ment do not necessarily represent official  
OERI position or policy.

**BEST COPY AVAILABLE**



Northwest Regional Educational Laboratory  
101 S.W. Main Street, Suite 500  
Portland, Oregon 97204  
Telephone (503) 275-9500

School Improvement Program



EA 024 575

**SCHOOL IMPROVEMENT  
NETWORK DIRECTORY  
1992 SUPPLEMENT**

**Compiled by:  
Linda Gipe**



Northwest Regional Educational Laboratory  
101 S.W. Main Street, Suite 500  
Portland, Oregon 97204  
Telephone (503) 275-9500

**School Improvement Program**



---

The Northwest Regional Educational Laboratory is an independent, nonprofit institution dedicated to helping others improve outcomes for children, youth and adults by providing research and development assistance to schools and communities in providing equitable, high-quality educational programs.

This publication is based on work sponsored wholly, or in part, by the Office of Educational Research and Improvement (OERI), U.S. Department of Education, under Contract Number RP91002001. The content of this publication does not necessarily reflect the views of OERI, the Department, or any other agency of the U.S. Government.

September 1992

## Table of Contents

<b>Introduction</b> .....		ix
<b>Elementary Schools</b> .....		1
1. Allie Yniestra Elementary School .....	Pensacola, Florida .....	3
2. Bay Elementary School .....	Santa Rosa Beach, Florida .....	3
3. Bellview Elementary School .....	Pensacola, Florida .....	3
4. Beulah Elementary School .....	Pensacola, Florida .....	4
5. Bitterroot Elementary School .....	Billings, Montana .....	4
6. Bonifay Elementary School .....	Bonifay, Florida .....	4
7. Brandon Elementary School .....	Columbus, Mississippi .....	4
8. Bratt Elementary School .....	Century, Florida .....	5
9. Breidablik Elementary School .....	Poulsbo, Washington .....	5
10. Brentwood Elementary School .....	Pensacola, Florida .....	5
11. Byrneville Elementary School .....	Century, Florida .....	6
12. Cairo Elementary School .....	Ontario, Oregon .....	6
13. Caledonia Elementary School .....	Caledonia, Mississippi .....	6
14. Cannon Beach Elementary School .....	Cannon Beach, Oregon .....	7
15. Centennial Elementary School .....	Scio, Oregon .....	7
16. Central Elementary School .....	Clewiston, Florida .....	7
17. Century Elementary School .....	Century, Florida .....	7
18. Chehalem Elementary School .....	Beaverton, Oregon .....	8
19. Churchill Elementary School .....	Cheyenne, Wyoming .....	8
20. Cole Elementary School .....	Cheyenne, Wyoming .....	8
21. Coleman Elementary School .....	Columbus, Mississippi .....	9
22. Country Oaks Elementary School .....	LaBelle, Florida .....	9
23. Curbullido School .....	Agana, Guam .....	9
24. Dash Point Elementary School .....	Tacoma, Washington .....	10
25. Demonstration Elementary School .....	Columbus, Mississippi .....	10
26. Diablo Elementary School .....	DoDDS, Panama .....	10
27. Dixon Elementary School .....	Pensacola, Florida .....	11
28. Eastside Elementary School .....	Clewiston, Florida .....	11
29. Edahow Elementary School .....	Pocatello, Idaho .....	11
30. Edgewater Elementary School .....	Pensacola, Florida .....	11
31. Ellis Elementary School .....	Chubbuck, Idaho .....	12
32. Fairview Elementary School .....	Columbus, Mississippi .....	12
33. Fawcett Elementary School .....	Tacoma, Washington .....	12
34. Ferry Pass Elementary School .....	Pensacola, Florida .....	13
35. Fort Davis Elementary School .....	DoDDS, Panama .....	13
36. Fountain Elementary School .....	Pueblo, Colorado .....	13
37. Franklin Academy .....	Columbus, Mississippi .....	14
38. Garfield Elementary School .....	Billings, Montana .....	14
39. Garfield Elementary School .....	Boise, Idaho .....	14
40. Gearhart Elementary School .....	Gearhart, Oregon .....	15
41. Golson Elementary School .....	Marianna, Florida .....	15
42. Graceville Elementary School .....	Graceville, Florida .....	15
43. Greenacres Elementary School .....	Pocatello, Idaho .....	15
44. Hallmark Elementary School .....	Pensacola, Florida .....	16
45. Happy Corner Elementary School .....	Salina, Kansas .....	16
46. Henderson Elementary School .....	Henderson, Colorado .....	16

47.	Henry Hill Elementary School .....	Independence, Oregon .....	17
48.	Herington Elementary School .....	Herington, Kansas .....	17
49.	Holm Elementary School .....	Pensacola, Florida .....	17
50.	Hughes Elementary School .....	Columbus, Mississippi .....	17
51.	Hygiene Elementary School .....	Hygiene, Colorado .....	18
52.	Independence Elementary School .....	Independence, Oregon .....	18
53.	Jefferson Elementary School .....	Medford, Oregon .....	18
54.	Jim Allen Elementary School .....	Cantonment, Florida .....	19
55.	Koelsch Elementary School .....	Boise, Idaho .....	19
56.	LaBelle Elementary School .....	LaBelle, Florida .....	19
57.	Lewis & Clark Elementary School .....	Great Falls, Montana .....	20
58.	Lincoln Elementary School .....	Lincoln, Kansas .....	20
59.	Lincoln Park Elementary School .....	Pensacola, Florida .....	20
60.	Lister Elementary School .....	Tacoma, Washington .....	21
61.	Longleaf Elementary School .....	Pensacola, Florida .....	21
62.	Loy Elementary School .....	Great Falls, Montana .....	21
63.	Malad Elementary School .....	Malad, Idaho .....	21
64.	Marion Park School .....	Meridian, Mississippi .....	22
65.	Maude Saunders Elementary School .....	DeFuniak Springs, Florida .....	22
66.	McArthur Elementary School .....	Pensacola, Florida .....	22
67.	McCarver Elementary School .....	Tacoma, Washington .....	23
68.	Meadowlark Elementary School .....	Eugene, Oregon .....	23
69.	Mitchell Elementary School .....	Columbus, Mississippi .....	23
70.	Molalla Grade School .....	Molalla, Oregon .....	24
71.	Molalla Primary School .....	Molalla, Oregon .....	24
72.	Molino Elementary School .....	Cantonment, Florida .....	24
73.	Monmouth Elementary School .....	Monmouth, Oregon .....	24
74.	Mont Downing Elementary School .....	Tacoma, Washington .....	25
75.	Montclair Elementary School .....	Pensacola, Florida .....	25
76.	Myrtle Grove Elementary School .....	Pensacola, Florida .....	25
77.	Navy Point Elementary School .....	Pensacola, Florida .....	26
78.	New Hope Elementary School .....	Columbus, Mississippi .....	26
79.	North Albany Elementary School .....	Albany, Oregon .....	26
80.	North Douglas Elementary School .....	Drain, Oregon .....	27
81.	Nyssa Elementary School .....	Nyssa, Oregon .....	27
82.	Oak Grove Elementary School .....	Rickreall, Oregon .....	27
83.	Oakridge Elementary School .....	Oakridge, Oregon .....	28
84.	Oakwood Elementary School .....	Preston, Idaho .....	28
85.	Pensacola Beach Elementary School .....	Gulf Breeze, Florida .....	28
86.	Philomath Elementary School .....	Philomath, Oregon .....	29
87.	Pilot Rock Elementary School .....	Pilot Rock, Oregon .....	29
88.	Pine Meadow Elementary School .....	Pensacola, Florida .....	29
89.	Pioneer Elementary School .....	Ontario, Oregon .....	30
90.	Ponce De Leon Elementary School .....	Ponce De Leon, Florida .....	30
91.	Ridgewood Elementary School .....	Beaverton, Oregon .....	30
92.	Riveria Elementary School .....	La Grande, Oregon .....	30
93.	Rocky Heights Elementary School .....	Hermiston, Oregon .....	31
94.	Rogers Elementary School .....	Tacoma, Washington .....	31
95.	Roosevelt Elementary School .....	Tacoma, Washington .....	31
96.	Sale Elementary School .....	Columbus, Mississippi .....	32
97.	Sam Case Elementary School .....	Newport, Oregon .....	32
98.	San Vicente Elementary School .....	Saipan, Mariana Islands .....	32
99.	Scenic Heights Elementary School .....	Pensacola, Florida .....	32
100.	Seaside Heights Elementary School .....	Seaside, Oregon .....	33

101.	Semmes Elementary School .....	Pensacola, Florida .....	33
102.	Sherwood Elementary School .....	Pensacola, Florida .....	33
103.	Skyline Elementary School .....	Tacoma, Washington .....	34
104.	Sneads Elementary School .....	Sneads, Florida .....	34
105.	Solomon Elementary School .....	Solomon, Kansas .....	34
106.	Spencer Bibbs Elementary School .....	Pensacola, Florida .....	35
107.	S'okes-Beard Elementary School .....	Columbus, Mississippi .....	35
108.	Sunnyside Elementary School .....	Great Falls, Montana .....	35
109.	Suter Elementary School .....	Pensacola, Florida .....	35
110.	Swegle Elementary School .....	Salem, Oregon .....	36
111.	Thatcher Elementary School .....	Thatcher, Idaho .....	36
112.	Union Academy .....	Columbus, Mississippi .....	36
113.	Vose Elementary School .....	Beaverton, Oregon .....	37
114.	Washington-Hoyt Elementary School .....	Tacoma, Washington .....	37
115.	Weis Elementary School .....	Pensacola, Florida .....	37
116.	West DeFuniak Elementary School .....	West DeFuniak Springs, Florida .....	38
117.	West End/Harris Elementary School .....	Meridian, Mississippi .....	38
118.	West Grade School .....	Stanfield, Oregon .....	38
119.	West Lowndes Elementary School .....	Columbus, Mississippi .....	38
120.	West Pensacola Elementary School .....	Pensacola, Florida .....	39
121.	Westside Elementary School .....	Clewiston, Florida .....	39
122.	Whittier Elementary School .....	Great Falls, Montana .....	39
123.	Whittier School .....	Butte, Montana .....	40
124.	Wilcox School .....	Lihue, Hawaii .....	40
125.	Willow Elementary School .....	La Grande, Oregon .....	40

**Middle/Junior High Schools .....** 43

126.	Bellview Middle School .....	Pensacola, Florida .....	45
127.	Brentwood Middle School .....	Pensacola, Florida .....	45
128.	Broadway Middle School .....	Seaside, Oregon .....	45
129.	Brownsville Middle School .....	Pensacola, Florida .....	45
130.	Castlerock Middle School .....	Billings, Montana .....	46
131.	Centennial Middle School .....	Portland, Oregon .....	46
132.	Chapman Middle School .....	Chapman, Kansas .....	46
133.	Chief Joseph Middle School .....	Bozeman, Montana .....	47
134.	Clewiston Middle School .....	Clewiston, Florida .....	47
135.	Corwin Middle School .....	Pueblo, Colorado .....	47
136.	Ferry Pass Middle School .....	Pensacola, Florida .....	47
137.	Gault Middle School .....	Tacoma, Washington .....	48
138.	Harding Gibbs Middle School .....	Firth, Idaho .....	48
139.	Hunt Junior High School .....	Columbus, Mississippi .....	48
140.	Hunt Middle School .....	Tacoma, Washington .....	49
141.	J.W. Poynter Junior High School .....	Hillsboro, Oregon .....	49
142.	Joe Cook Junior High School .....	Columbus, Mississippi .....	49
143.	Kate Griffin Junior High School .....	Meridian, Mississippi .....	49
144.	Kingston Junior High School .....	Kingston, Washington .....	50
145.	LaBelle Middle School .....	LaBelle, Florida .....	50
146.	Mead Junior High School .....	Mead, Colorado .....	51
147.	Molalla Grade School .....	Molalla, Oregon .....	51
148.	Piti Middle School .....	Agana, Guam .....	51
149.	Scio Middle School .....	Scio, Oregon .....	52
150.	Waldport Middle School .....	Waldport, Oregon .....	52
151.	Walton Middle School .....	DeFuniak Springs, Florida .....	52



152.	Warrington Middle School .....	Pensacola, Florida .....	53
153.	West Lowndes Middle School .....	Columbus, Mississippi .....	53
154.	Workman Middle School .....	Pensacola, Florida .....	53
<b>High Schools .....</b>			<b>55</b>
155.	Bandon High School .....	Bandon, Oregon .....	57
156.	Caledonia High School .....	Caledonia, Mississippi .....	57
157.	Canby Union High School .....	Canby, Oregon .....	57
158.	Capitol High School .....	Boise, Idaho .....	57
159.	Century High School .....	Century, Florida .....	58
160.	Chapman High School .....	Chapman, Kansas .....	58
161.	Clewiston High School .....	Clewiston, Florida .....	58
162.	Columbus East High School .....	Columbus, Mississippi .....	59
163.	Columbus West High School .....	Columbus, Mississippi .....	59
164.	Escambia High School .....	Pensacola, Florida .....	59
165.	Foster High School .....	Seattle, Washington .....	60
166.	Glencoe High School .....	Hillsboro, Oregon .....	60
167.	Hermiston High School .....	Hermiston, Oregon .....	60
168.	Holmes County High School .....	Bonifay, Florida .....	61
169.	Kamloops Senior Secondary School .....	Kamloops, British Columbia .....	61
170.	La Grande High School .....	La Grande, Oregon .....	61
171.	LaBelle High School .....	LaBelle, Florida .....	61
172.	Lake Oswego Senior High School .....	Lake Oswego, Oregon .....	62
173.	Lakeridge High School .....	Lake Oswego, Oregon .....	62
174.	Marianna High School .....	Marianna, Florida .....	62
175.	McKellar Vocational Center .....	Columbus, Mississippi .....	62
176.	New Hope High School .....	Columbus, Mississippi .....	63
177.	Pensacola High School .....	Pensacola, Florida .....	63
178.	Pine Forest High School .....	Pensacola, Florida .....	63
179.	Quivira Heights High School .....	Bushton, Kansas .....	64
180.	Salina High School South .....	Salina, Kansas .....	64
181.	Stanfield High School .....	Stanfield, Oregon .....	64
182.	Sunset High School .....	Beaverton, Oregon .....	65
183.	Sutherlin High School .....	Sutherlin, Oregon .....	65
184.	Tate High School .....	Gonzalez, Florida .....	65
185.	Troy High School .....	Troy, Montana .....	65
186.	Walton Senior High School .....	DeFuniak Springs, Florida .....	66
187.	Weston-McEwan High School .....	Athena, Oregon .....	66
<b>Multi-Level Schools .....</b>			<b>67</b>
188.	Alternative High School .....	Salina, Kansas .....	69
189.	Beggs Educational Center .....	Pensacola, Florida .....	69
190.	Bennington Elementary School .....	Bennington, Kansas .....	69
191.	Corbett High School .....	Corbett, Oregon .....	69
192.	Denton Schools .....	Denton, Montana .....	70
193.	Ernest Ward High School .....	Pensacola, Florida .....	70
194.	Escambia Westgate Special Ed. Center .....	Pensacola, Florida .....	70
195.	Freeport High School .....	Freeport, Florida .....	71
196.	Gervais Elementary School .....	Gervais, Oregon .....	71
197.	Grand Ridge School .....	Grand Ridge, Florida .....	71
198.	Hope School .....	Marianna, Florida .....	71
199.	Lacomb Elementary School .....	Lebanon, Oregon .....	72

200.	Lelu Elementary School .....	Tofof, Kosrae, Micronesia .....	72
201.	Lost River High School .....	Merrill, Oregon .....	72
202.	Lowndes County Vocational Complex .....	Columbus, Mississippi .....	73
203.	Paxton School .....	Paxton, Florida .....	73
204.	Rota Elementary School .....	Saipan, Mariana Islands .....	73
205.	Schuebel Elementary School .....	Beavercreek, Oregon .....	73
206.	Sidney Nelson Middle High School .....	Cantonment, Florida .....	74
207.	Solomon Junior/Senior High School .....	Solomon, Kansas .....	74
208.	Tescott Elementary School .....	Tescott, Kansas .....	74
209.	Utwe Elementary School .....	Tofof, Kosrae, Micronesia .....	75
210.	Walton County Voc-Tech .....	DeFuniak Springs, Florida .....	75
211.	White City Schools .....	White City, Kansas .....	75
<b>Index I: Effective Schooling Research Practice Clusters .....</b>			<b>77</b>
<b>Index II: Practice Clusters Selected by Schools .....</b>			<b>81</b>
<b>Index III: Goal and Content Areas Selected by Schools .....</b>			<b>89</b>

---

## Acknowledgements

Several people have contributed to the development and production of the *School Improvement Network Directory* series. Former NWREL staff members **Jocelyn A Butler**, **Anne Batey**, and **Valerie Farley** were responsible, respectively, for the *Directory* design and initial development, computerized database, and early production work. Research and Development Specialist **Kathleen Cotton** edited this *Supplement*. *Supplement* compiler **Linda Gipe** has been responsible for data entry, layout, and production of the *Directory* editions since 1989.

---

## Introduction

The *School Improvement Network Directory/1992 Supplement* is part of a series designed to facilitate information exchange and support among schools and districts involved in long-term school improvement efforts. The *Supplement* provides information about 211 schools working with the school-based management process, *Onward to Excellence* (OTE), to improve student performance.

This *Supplement* represents a departure from the editions of the *Directory* published during the years 1988-1991. In each of those years, we sent questionnaires to *all* schools that had ever received training in the OTE process, requesting demographic and school improvement information from them. Each edition of the *Directory* included information about the schools that completed and returned questionnaires that year.

To avoid the inevitable redundancy caused by such an approach, we decided this year to publish information only about those schools which had not been profiled in previous editions of the *Directory*. We sent questionnaires to the approximately 550 schools which (1) had become involved in OTE too recently to have appeared in the *1991 Directory*, or (2) had been contacted for information for the *1991 Directory* but either did not respond at all or did not yet have goal information available. Those schools returning questionnaires by April 15, 1992 are featured in this *Supplement*. Thus, the *Supplement* augments the information provided in the *School Improvement Network 1991 Directory*, without duplicating that information.

The questionnaires requested a variety of information, all included in a separate entry for each responding school. Each school entry is included in one of four sections, according to level, and alphabetically as noted in the Table of Contents.

Each entry includes a school contact person with full address and telephone number, followed by information about the status of use of *Onward to Excellence* in the school (when use of OTE was begun and whether or not the school is currently using the process). The next section provides background information on the school, including level, number of students, and the nature of the area in which the school is located. Area is identified by population: large city (over 50,000), small city (25,000-50,000), town or suburban (2,500-

25,000), rural (2,500 or fewer) and Department of Defense Dependent Schools (overseas schools associated with military bases).

Each entry then lists information on the student body composition by percentage in various categories and the school's mobility rate (the percentage of the student population in the school that moves in or out of the district each year). Finally, each entry identifies the school improvement goal(s), when the school began working on the goal(s), current status of progress toward the goal(s), and the practice clusters used in the school's prescription to meet the goal(s).

Examination of the schools included in this *Supplement* provides the following information: All but 21 of the schools continue to use the *Onward to Excellence* process. Of the 211 schools, 125 (59%) are elementary schools, 29 (14%) are middle/junior high schools, 33 (16%) are high schools, and 24 (11%) serve multiple levels of students. Elementary schools are those serving grade K or 1 to grade 5 or 6; middle/junior high schools serve grade 6 or 7 to grade 8 or 9; high schools serve grade 8 or 9 to grade 12; and multi-level schools serve other configurations, such as grades K-8, 7-12, K-12, etc.

Like the 1991 edition of the *Directory*, this *Supplement* includes information only on the *current* goal area(s) for each school. Most schools focus on a single schoolwide improvement goal, with one school reporting two active goals and three schools each reporting three active goals. A total of 147 goals are reported by the 211 schools: 93 goals (63%) focus on improving student academic achievement, 21 goals (14%) focus on improving student attitude, and 33 goals (22%) focus on improving student behavior.

Reporting progress on those 147 goals, 6 schools (4%) met the long-term standard; 19 (13%) met the short-term target; 39 (27%) made some progress toward the target; 4 (3%) made little or no progress toward the goal; and 71 (48%) report that progress has not yet been formally assessed. Eight schools (5%) did not cite any of these options regarding progress.

The charts on the following page enumerate, by level and location, (1) the schools featured in the *Supplement* and (2) *Supplement* schools combined with those featured in the 1991 *Directory*.

### 1992 Supplement Schools

	Elementary Schools	Middle/Junior High Schools	High Schools	Multi-Level Schools	Totals
British Columbia	-	-	1	-	1
DoDDS (Panama)	2	-	-	-	2
Colorado	3	2	-	-	5
Florida	42	9	10	9	70
Hawaii	1	-	-	-	1
Idaho	8	1	1	-	10
Kansas	4	1	3	5	13
Mississippi	15	4	5	1	25
Montana	7	2	1	1	11
Oregon	29	6	11	5	51
Pacific Jurisdictions	2	1	-	3	6
Washington	10	3	1	-	14
Wyoming	2	-	-	-	2
	<u>125</u>	<u>29</u>	<u>33</u>	<u>24</u>	<u>211</u>

### 1991 Directory + 1992 Supplement Schools

	Elementary Schools	Middle/Junior High Schools	High Schools	Multi-Level Schools	Totals
British Columbia	-	-	1	-	1
DoDDS (Panama)	6	1	1	1	9
Colorado	9	5	-	2	16
Florida	56	10	12	11	89
Hawaii	12	5	2	8	27
Idaho	21	5	3	-	29
Kansas	4	1	3	5	13
Mississippi	22	7	7	1	37
Montana	23	4	4	3	34
Oregon	115	28	46	13	202
Pacific Jurisdictions	5	1	2	4	12
Washington	26	10	3	-	39
Wyoming	2	-	-	-	2
	<u>301</u>	<u>77</u>	<u>84</u>	<u>48</u>	<u>510</u>

---

To assist users of this *Supplement*, three indices are provided:

- **Index I: Effective Schooling Research Practice Clusters:** The list of practice clusters from *Effective Schooling Practices: A Research Synthesis/1990 Update*. The numbers of relevant practice clusters are listed in each entry.
- **Index II: Practice Clusters Selected by Schools:** Schools which cite each practice cluster, listed by the identifying numbers they are assigned in this *Supplement*.
- **Index III: Goal and Content Areas Selected by Schools:** An index of schools organized by goal content area ("reading," "math," self-esteem," etc.) and by level.

Like other publications in this series, the *1992 Supplement* can be expected to increase educators' awareness of and access to the large and growing network of schools using *Onward to Excellence*. Schools will be queried again next year and another update prepared to include additional information about the use of OTE in schools.

## Elementary Schools

A total of 125 elementary schools returned questionnaires and are listed in this section. Schools include those with students in grade K or 1 through grade 5 or 6. Not all schools provided all requested information. Of responding schools, 51 have more than 500 students, 67 have fewer than 500 students, and 1 has fewer than 100 students. In terms of location, 36 are in large cities (over 50,000 population), 20 are in small cities (25,000-50,000), 39 are in towns or suburban areas (2,500-25,000) and 28 are in rural areas (2,500 or fewer).

In selecting improvement goals, 63 schools cite goals related to student achievement, 17 cite student behavior goals, and 10 cite student attitude goals. Of those identifying goals, 4 met long-term standards in their OTE cycle, 12 met short-term targets, 23 made some progress toward the target, 2 made little or no progress, and 44 have not yet formally assessed their progress.



### 1. Allie Yniestra Elementary School

Janice Monks, CRT  
Allie Yniestra Elementary School  
Escambia School District  
2315 West Jackson Street  
Pensacola, FL 32526  
904/444-2795

**OTE Status:** Started 10/31/90;  
actively using OTE

**School Level:** Elementary

**Number of Students:** 377

**Area:** Small City

**Student Population:**

**Composition:** 32% White; 57% Black;  
2% Hispanic; 8% Asian or Pacific  
Islander; 1% American Indian/Alaska  
Native

**Free/Reduced Lunch:** 95%

**Mobility:** 48%

**Goal:** Student Behavior: School as Place to  
Learn

**Start Date:** 1990

**Goal Status:** Made some progress toward  
target

**Practice Clusters:** 1.2.2; 1.2.3; 1.4.1;  
1.4.2; 1.5.1; 1.6.1; 2.1.1; 2.1.2; 2.2.3;  
2.3.2; 2.4.2; 2.6.1; 2.7.1

### 2. Bay Elementary School

Janet Campbell, Principal  
Bay Elementary School  
Walton County School District  
Route 2; Box 3310  
Santa Rosa Beach, FL 32459  
904/231-4215

**OTE Status:** Started 9/5/91;  
actively using OTE

**School Level:** Elementary

**Number of Students:** 185

**Area:** Rural

**Student Population:**

**Composition:** 98% White; 1% Black;  
1% Hispanic

**Free/Reduced Lunch:** 50%

**Mobility:** 24%

**Goal:** Student Academic Achievement: Math

**Start Date:** 1991

**Goal Status:** Progress not yet formally  
assessed

**Practice Clusters:** Not listed

### 3. Bellview Elementary School

Grace Roden, Coordinator  
Bellview Elementary School  
Escambia School District  
4425 Bellview Avenue  
Pensacola, FL 32526  
904/944-0100

**OTE Status:** Started 9/1/91;  
actively using OTE

**School Level:** Elementary

**Number of Students:** 815

**Area:** Large City

**Student Population:**

**Composition:** 90% White; 5% Black;  
2% Hispanic; 3% Asian or Pacific  
Islander

**Free/Reduced Lunch:** 51%

**Mobility:** 40%

**Goal A:** Student Academic Achievement: Writing

**Start Date:** 1991

**Goal Status:** Made some progress toward  
target

**Practice Clusters:** Not listed

**Goal B:** Student Behavior: Dropouts

**Start Date:** 1991

**Goal Status:** Made some progress toward  
target

**Practice Clusters:** Not listed

**Goal C:** Student Attitude: School as Place to  
Learn

**Start Date:** 1991

**Goal Status:** Made some progress toward  
target

**Practice Clusters:** Not listed

## Elementary Schools

### 4. Beulah Elementary School

Suzanne Angstadt, Principal  
Beulah Elementary School  
Escambia School District  
6201 Helms Road  
Pensacola, FL 32506  
904/944-0550

**OTE Status:** Started 10/31/90;  
actively using OTE

**School Level:** Elementary

**Number of Students:** 600

**Area:** Rural

**Student Population:**

**Composition:** 95% White; 2% Black;  
.5% Hispanic; 1% Asian or Pacific  
Islander; 1% Indian

**Free/Reduced Lunch:** 45%

**Mobility:** 34%

**Goal:** Student Academic Achievement:  
Language Arts

**Start Date:** 1990

**Goal Status:** Progress not yet formally  
assessed

**Practice Clusters:** 1.3.1; 1.3.2

### 5. Bitterroot Elementary School

Billie Strissel, Principal  
Bitterroot Elementary School  
Billings Public Schools  
1801 Bench Blvd.  
Billings, MT 59105  
406/255-3825

**OTE Status:** Started 10/1/91;  
actively using OTE

**School Level:** Elementary

**Number of Students:** Not listed

**Area:** Small City

**Student Population:**

**Composition:** 96% White; 2% Hispanic;  
2% American Indian/Alaska Native

**Free/Reduced Lunch:** 29%

**Mobility:** 4%

**Goal:** Student Behavior: Discipline Referrals

**Start Date:** 1990

**Goal Status:** Progress not yet formally  
assessed

**Practice Clusters:** 1.2.4; 1.4.2; 1.4.3;  
2.2.3; 2.4.2

### 6. Bonifay Elementary School

Janis Johnson, Principal  
Bonifay Elementary School  
Holmes County School District  
307 West North Avenue  
Bonifay, FL 32425  
904/547-3631

**OTE Status:** Started 2/24/92;  
actively using OTE

**School Level:** Elementary

**Number of Students:** 820

**Area:** Rural

**Student Population:**

**Composition:** 95% White; 4% Black;  
1% Asian or Pacific Islander

**Free/Reduced Lunch:** 56%

**Mobility:** 10%

**Goal:** Not listed

**Start Date:** Not listed

**Goal Status:** Not listed

**Practice Clusters:** Not listed

### 7. Brandon Elementary School

Gerald Scallions, Principal  
Brandon Elementary School  
Columbus Municipal School District  
2630 McArthur Drive  
Columbus, MS 39701  
601/328-5568

**OTE Status:** Started 10/10/91;  
actively using OTE

**School Level:** Elementary

**Number of Students:** 456

**Area:** Town/Suburban

**Student Population:**

**Composition:** 50.9% White; 49.1% Black  
**Free/Reduced Lunch:** 40%  
**Mobility:** 38%

**Goal:** Not listed

**Start Date:** Not listed

**Goal Status:** Not listed

**Practice Clusters:** Not listed

**8. Bratt Elementary School**

John Dell Hucabee (Mrs.), Principal  
 Bratt Elementary School  
 Escambia School District  
 5721 North Highway 99  
 Century, FL 32535  
 904/327-6137

**OTE Status:** Started 10/31/90;  
 actively using OTE

**School Level:** Elementary

**Number of Students:** 368

**Area:** Rural

**Student Population:**

**Composition:** 90% White; 5% Black;  
 5% American Indian/Alaska Native  
**Free/Reduced Lunch:** 45%  
**Mobility:** 10%

**Goal:** Student Academic Achievement:  
 Reading

**Start Date:** 1990

**Goal Status:** Progress not yet formally  
 assessed

**Practice Clusters:** 1.1.1; 1.2.1; 1.3.5;  
 1.4.1; 1.4.3; 1.6.1; 2.1.1; 2.2.2; 2.2.3;  
 2.2.4; 2.3.1; 2.4.1; 2.4.2; 2.6.1

**9. Braidablik Elementary School**

Marylou Murphy, Principal  
 Braidablik Elementary School  
 North Kitsap School District No. 400  
 25142 Waghorn Road NW  
 Poulsbo, WA 98370  
 206/770-8802

**OTE Status:** Started 9/1/90;  
 actively using OTE

**School Level:** Elementary

**Number of Students:** 691

**Area:** Town/Suburban

**Student Population:**

**Composition:** Not listed  
**Free/Reduced Lunch:** Not listed  
**Mobility:** Not listed

**Goal:** Student Academic Achievement:  
 Language Arts

**Start Date:** 1990

**Goal Status:** Met short-term target

**Practice Clusters:** 1.2.1; 1.2.2; 1.2.3;  
 1.3.5; 1.4.3; 1.5.1; 2.2.2

**10. Brentwood Elementary School**

Gwen Talbot, Principal  
 Brentwood Elementary School  
 Escambia School District  
 4820 North Palafox Street  
 Pensacola, FL 32505  
 904/444-2730

**OTE Status:** Started 10/31/90;  
 actively using OTE

**School Level:** Elementary

**Number of Students:** 450

**Area:** Large City

**Student Population:**

**Composition:** 60% White; 39% Black;  
 1% American Indian/Alaska Native  
**Free/Reduced Lunch:** 83%  
**Mobility:** 50%

## Elementary Schools

**Goal:** Student Academic Achievement:  
Reading  
**Start Date:** 1990  
**Goal Status:** Made some progress toward  
target  
**Practice Clusters:** 1.6.1

### 11. Byrneville Elementary School

Roy Ikner, Principal  
Byrneville Elementary School  
Escambia School District  
1600 Bryneville Road  
Century, FL 32535  
904/256-3738

**OTE Status:** Started 8/26/91;  
actively using OTE

**School Level:** Elementary  
**Number of Students:** 196  
**Area:** Rural

**Student Population:**  
**Composition:** 99% White; 1% Black  
**Free/Reduced Lunch:** 47%  
**Mobility:** 10%

**Goal:** Not listed  
**Start Date:** Not listed  
**Goal Status:** Not listed  
**Practice Clusters:** Not listed

### 12. Cairo Elementary School

Chad Russon, Principal  
Cairo Elementary School  
Ontario School District No. 8  
531 Highway 20/26  
Ontario, OR 97914  
503/889-5745

**OTE Status:** Started 9/1/89;  
actively using OTE

**School Level:** Elementary  
**Number of Students:** 123  
**Area:** Town/Suburban

**Student Population:**  
**Composition:** 79% White; 18% Hispanic;  
3% Asian or Pacific Islander  
**Free/Reduced Lunch:** 49%  
**Mobility:** 8%

**Goal:** Student Academic Achievement: Math  
**Start Date:** 1989  
**Goal Status:** Progress not yet formally  
assessed  
**Practice Clusters:** 1.3.3; 1.4.1; 1.4.2;  
2.1.2; 2.3.3; 2.4.1; 2.4.2

### 13. Caledonia Elementary School

Roger Hill, Principal  
Caledonia Elementary School  
Lowndes County School District  
111 Confederate Drive  
Caledonia, MS 39740  
601/356-4936

**OTE Status:** Started 10/10/91;  
actively using OTE

**School Level:** Elementary  
**Number of Students:** 760  
**Area:** Rural  
**Student Population:**

**Composition:** 67% White; 33% Black  
**Free/Reduced Lunch:** 54%  
**Mobility:** 47%

**Goal:** Student Academic Achievement:  
Reading  
**Start Date:** 1991  
**Goal Status:** Little or no progress  
**Practice Clusters:** 1.1.1; 1.2.2; 1.2.3;  
1.2.4; 1.3.1; 1.3.2; 1.3.3; 1.3.4; 1.3.5;  
1.4.1; 1.4.2; 1.4.3; 1.5.1; 2.1.2; 2.2.1;  
2.2.2; 2.2.3; 2.2.4; 2.3.1; 2.3.2; 2.3.3;  
2.4.1; 2.4.2; 2.5.1; 2.7.1

**14. Cannon Beach Elementary School**

Barry Campbell, Principal  
 Cannon Beach Elementary School  
 Seaside School District  
 PO Box 277  
 Cannon Beach, OR 97110-0277  
 503/436-2294

**OTE Status:** Start date not listed;  
 actively using OTE

**School Level:** Elementary

**Number of Students:** 156

**Area:** Rural

**Student Population:**

**Composition:** 84% White; 1% Black;  
 10% Hispanic; 4% Asian or Pacific  
 Islander; 1% Indian

**Free/Reduced Lunch:** Not listed

**Mobility:** Not listed

**Goal:** Not listed

**Start Date:** Not listed

**Goal Status:** Not listed

**Practice Clusters:** Not listed

**15. Centennial Elementary School**

Larry Armbrust, Principal  
 Centennial Elementary School  
 Scio School District No. 95  
 38875 NW First Avenue  
 Scio, OR 97374  
 503/394-3265

**OTE Status:** Started 10/1/87;  
 actively using OTE

**School Level:** Elementary

**Number of Students:** 305

**Area:** Rural

**Student Population:**

**Composition:** 97% White; 1% Black;  
 1% Hispanic; 1% Asian or Pacific  
 Islander

**Free/Reduced Lunch:** 40%

**Mobility:** 10%

**Goal:** Student Academic Achievement: Writing

**Start Date:** 1990

**Goal Status:** Made some progress toward  
 target

**Practice Clusters:** 1.1.1; 1.3.4; 1.4.1;  
 1.5.1; 2.1.1; 2.1.2; 2.5.1; 2.6.1

**16. Central Elementary School**

Howard McKire, Principal  
 Central Elementary School  
 Hendry County School District  
 1000 South Deane Duff Avenue  
 Clewiston, FL 33440  
 813/983-4155

**OTE Status:** Started 11/19/91;  
 actively using OTE

**School Level:** Elementary

**Number of Students:** 639

**Area:** Town/Suburban

**Student Population:**

**Composition:** 45% White; 37% Black;  
 18% Hispanic

**Free/Reduced Lunch:** 55%

**Mobility:** 12%

**Goal:** Student Academic Achievement:  
 Reading

**Start Date:** 1991

**Goal Status:** Made some progress toward  
 target

**Practice Clusters:** Not listed

**17. Century Elementary School**

Martha Ellen Wiseman, Principal  
 Century Elementary School  
 Escambia School District  
 440 East Hecker Road  
 Century, FL 32525  
 904/256-3167

**OTE Status:** Started 8/26/91;  
 actively using OTE

**School Level:** Elementary

**Number of Students:** 304

**Area:** Rural

*Elementary Schools*

**Student Population:**

**Composition:** 34% White; 66% Black  
**Free/Reduced Lunch:** 88%  
**Mobility:** 14.8%

**Goal:** Not listed

**Start Date:** Not listed

**Goal Status:** Not listed

**Practice Clusters:** Not listed

**18. Chehalem Elementary School**

Glen Rutherford, Principal  
Chehalem Elementary School  
Beaverton School District No. 48J  
PO Box 200  
Beaverton, OR 97075  
503/591-4510

**OTE Status:** Started 9/15/86;  
not actively using OTE

**School Level:** Elementary

**Number of Students:** 640

**Area:** Small City

**Student Population:**

**Composition:** 89% White; 1% Black;  
2% Hispanic; 7.5% Asian or Pacific  
Islander; .5% American Indian/Alaska  
Native

**Free/Reduced Lunch:** 10%

**Mobility:** 20%

**19. Churchill Elementary School**

Stuart Nelson, Principal  
Churchill Elementary School  
Laramie County School District No. 1  
510 West 29th Street  
Cheyenne, WY 82001  
307/771-2410

**OTE Status:** Started 2/15/86;  
actively using OTE

**School Level:** Elementary

**Number of Students:** 480

**Area:** Large City

**Student Population:**

**Composition:** 40% White; 30% Black;  
25% Hispanic; 5% Asian or Pacific  
Islander

**Free/Reduced Lunch:** 60%

**Mobility:** 40%

**Goal:** Student Academic Achievement:  
Reading

**Start Date:** 1988

**Goal Status:** Made some progress toward  
target

**Practice Clusters:** Not listed

**20. Cole Elementary School**

Dan Pratz, Principal  
Cole Elementary School  
Laramie County School District No. 1  
615 West 9th Street  
Cheyenne, WY 82007  
307/635-2448

**OTE Status:** Started 2/15/86;  
not actively using OTE

**School Level:** Elementary

**Number of Students:** 230

**Area:** Large City

**Student Population:**

**Composition:** 55% White; 10% Black;  
33% Hispanic; 1% Asian or Pacific  
Islander; 1% American Indian/Alaska  
Native

**Free/Reduced Lunch:** 92%

**Mobility:** 80%

**21. Coleman Elementary School**

Donnie Goss, Principal  
 Coleman Elementary School  
 Columbus Municipal School District  
 723 22nd Street South  
 Columbus, MS 39701  
 601/328-4337

**OTE Status:** Started 10/10/91;  
 actively using OTE

**School Level:** Elementary  
**Number of Students:** 322  
**Area:** Small City  
**Student Population:**

**Composition:** 15% White; 85% Black  
**Free/Reduced Lunch:** 83%  
**Mobility:** 28%

**Goal:** Student Academic Achievement:  
 Reading  
**Start Date:** 1991  
**Goal Status:** Progress not yet formally  
 assessed

**Practice Clusters:** 1.1.1; 1.2.1; 1.2.2;  
 1.2.3; 1.2.4; 1.3.1; 1.3.2; 1.3.3; 1.3.4;  
 1.3.5; 1.4.1; 1.4.2; 1.4.3; 1.5.1; 1.6.1;  
 2.1.1; 2.1.2; 2.2.1; 2.2.2; 2.2.3; 2.2.4;  
 2.3.1; 2.3.2; 2.3.3; 2.4.1; 2.4.2; 2.5.1;  
 2.6.1; 2.7.1

**22. Country Oaks Elementary School**

Michael Gasz, Principal  
 Country Oaks Elementary School  
 Hendry County School District  
 2052 NW Eucalyptus Blvd.  
 LaBelle, FL 33935  
 813/675-3303

**OTE Status:** Started 11/19/91;  
 actively using OTE

**School Level:** Elementary  
**Number of Students:** 460  
**Area:** Town/Suburban

**Student Population:**

**Composition:** 64% White; 12% Black;  
 25% Hispanic  
**Free/Reduced Lunch:** 55%  
**Mobility:** 12%

**Goal:** Student Academic Achievement: Math  
**Start Date:** 1991  
**Goal Status:** Met short-term target  
**Practice Clusters:** 1.3.4; 1.4.2; 1.4.3;  
 2.1.1; 2.2.2; 2.2.3; 2.2.4; 2.3.1; 2.3.2;  
 2.4.2; 2.7.1

**23. Curbullido School**

Norma Tabayoyong, Principal  
 Curbullido School  
 Guam Department of Education  
 PO Box ED  
 Agana, GU 96910  
 671/472-8901

**OTE Status:** Started 9/1/89;  
 actively using OTE

**School Level:** Elementary  
**Number of Students:** 450  
**Area:** Large City  
**Student Population:**

**Composition:** 1% White; 1% Black;  
 98% Asian or Pacific Islander  
**Free/Reduced Lunch:** 44%  
**Mobility:** 4%

**Goal:** Student Academic Achievement:  
 Reading  
**Start Date:** 1989  
**Goal Status:** Made some progress toward  
 target

**Practice Clusters:** 1.1.1; 1.2.2; 1.2.4;  
 1.3.2; 1.3.3; 1.3.4; 1.3.5; 1.4.1; 1.4.2;  
 1.4.3; 1.5.1; 1.6.1; 2.1.1; 2.1.2; 2.2.2;  
 2.2.3; 2.2.4; 2.3.2; 2.4.1; 2.4.2; 2.5.1;  
 2.6.1; 2.7.1

## Elementary Schools

### 24. Dash Point Elementary School

Theron Wheeler, Principal  
Dash Point Elementary School  
Tacoma School District No. 10  
6546 Dash Point Blvd. NE  
Tacoma, WA 98422  
206/596-1385

**OTE Status:** Started 2/12/91;  
actively using OTE

**School Level:** Elementary

**Number of Students:** 248

**Area:** Large City

**Student Population:**

**Composition:** 88% White; 2% Black;  
2% Hispanic; 7% Asian or Pacific  
Islander; 1% American Indian/Alaska  
Native

**Free/Reduced Lunch:** 6%

**Mobility:** 22%

**Goal:** Not listed

**Start Date:** Not listed

**Goal Status:** Not listed

**Practice Clusters:** Not listed

### 25. Demonstration Elementary School

Alma Turner, Principal  
Demonstration Elementary School  
Columbus Municipal School District  
W-Box 1617  
Columbus, MS 39701  
601/329-7358

**OTE Status:** Started 10/10/91;  
actively using OTE

**School Level:** Elementary

**Number of Students:** 159

**Area:** Small City

**Student Population:**

**Composition:** 37.7% White; 62.3% Black

**Free/Reduced Lunch:** 58.5%

**Mobility:** 21%

**Goal:** Student Academic Achievement:  
Reading

**Start Date:** 1991

**Goal Status:** Met short-term target

**Practice Clusters:** 1.3.3; 1.3.5; 1.4.2;  
1.6.1; 2.4.2; 2.6.1

### 26. Diablo Elementary School

Rebecca Sharp, Principal  
Diablo Elementary School  
DoDDS  
Panama Region; Unit 0925  
APO, AA 34002

**OTE Status:** Started 10/1/87;  
actively using OTE

**School Level:** Elementary

**Number of Students:** 500

**Area:** DoDDS

**Student Population:**

**Composition:** 50% White; 15% Black;  
33% Hispanic; 2% Asian or Pacific  
Islander

**Free/Reduced Lunch:** Not listed

**Mobility:** 33%

**Goal A:** Student Academic Achievement: Math

**Start Date:** 1988

**Goal Status:** Met long-term standard

**Practice Clusters:** 1.3.1; 1.3.5; 2.7.1

**Goal B:** Student Academic Achievement:

Reading

**Start Date:** 1988

**Goal Status:** Made some progress toward  
target

**Practice Clusters:** 1.3.1; 1.3.5; 2.7.1



**27. Dixon Elementary School**

Marcisa Nowlin, PRT  
 Dixon Elementary School  
 Escambia School District  
 1201 North H Street  
 Pensacola, FL 32503  
 904/444-2745

**OTE Status:** Started 8/26/91;  
 actively using OTE

**School Level:** Elementary  
**Number of Students:** 462  
**Area:** Large City  
**Student Population:**  
**Composition:** 6% White; 93% Black;  
 .6% Hispanic; .4% Asian or Pacific  
 Islander  
**Free/Reduced Lunch:** 90%  
**Mobility:** 63%

**Goal:** Not listed  
**Start Date:** Not listed  
**Goal Status:** Not listed  
**Practice Clusters:** Not listed

**28. Eastside Elementary School**

C. Gordon Swaggerty, Jr., Principal  
 Eastside Elementary School  
 Hendry County School District  
 201 West Arroyo Avenue  
 Clewiston, FL 33440  
 813/983-6113

**OTE Status:** Started 11/19/91;  
 actively using OTE

**School Level:** Elementary  
**Number of Students:** 643  
**Area:** Town/Suburban  
**Student Population:**  
**Composition:** 44.8% White; 29% Black;  
 25% Hispanic; .3% Asian or Pacific  
 Islander; .9% American Indian/Alaska  
 Native  
**Free/Reduced Lunch:** 50%  
**Mobility:** 1%

**Goal:** Student Academic Achievement:  
 Reading  
**Start Date:** 1991  
**Goal Status:** Progress not yet formally  
 assessed  
**Practice Clusters:** Not listed

**29. Edahow Elementary School**

Helen Whitmore, Principal  
 Edahow Elementary School  
 25 Pocatello District  
 2020 Pocatello Creek Road  
 Pocatello, ID 83201  
 208/233-1844

**OTE Status:** Started 10/10/88;  
 actively using OTE

**School Level:** Elementary  
**Number of Students:** Not listed  
**Area:** Small City  
**Student Population:**  
**Composition:** 99% White; .3% Black;  
 .3% Hispanic; .3% American Indian/  
 Alaska Native  
**Free/Reduced Lunch:** 22%  
**Mobility:** 5%

**Goal:** Student Attitude: Playground Behavior  
**Start Date:** 1988  
**Goal Status:** Progress not yet formally  
 assessed  
**Practice Clusters:** 1.4.2; 2.1.1; 2.2.3

**30. Edgewater Elementary School**

Virginia Abercrombie, Principal  
 Edgewater Elementary School  
 Escambia School District  
 100 Boeing Street  
 Pensacola, FL 32507  
 904/455-4567

**OTE Status:** Started 10/31/90;  
 actively using OTE

**School Level:** Elementary  
**Number of Students:** 585  
**Area:** Large City

## Elementary Schools

### Student Population:

**Composition:** 62% White; 35% Black;  
1% Hispanic; 2% Asian or Pacific  
Islander

**Free/Reduced Lunch:** 85%

**Mobility:** 40%

**Goal:** Student Academic Achievement:  
Language Development

**Start Date:** 1991

**Goal Status:** Progress not yet formally  
assessed

**Practice Clusters:** 1.1.1; 1.2.1; 1.2.4;  
1.3.1; 1.3.2; 1.3.3; 1.3.4; 1.3.5; 1.4.1;  
1.4.2; 1.4.3; 1.5.1; 1.6.1; 2.1.1; 2.1.2;  
2.2.1; 2.2.2; 2.2.3; 2.2.4; 2.3.1; 2.3.3;  
2.4.1; 2.4.2; 2.5.1; 2.6.1; 2.7.1

### 31. Ellis Elementary School

Roger Wheeler, Principal  
Ellis Elementary School  
25 Pocatello District  
11888 North Whitaker Road  
Chubbuck, ID 83202  
208/237-4742

**OTE Status:** Started 9/19/90;  
actively using OTE

**School Level:** Elementary

**Number of Students:** 525

**Area:** Town/Suburban

**Student Population:**

**Composition:** 89% White; 3.5% Black;  
3.5% Hispanic; 3.5% Asian or Pacific  
Islander

**Free/Reduced Lunch:** 35%

**Mobility:** 20%

**Goal:** Student Academic Achievement:  
Listening Skills

**Start Date:** 1990

**Goal Status:** Made some progress toward  
target

**Practice Clusters:** 1.1.1; 1.3.2; 1.4.1; 2.2.2

### 32. Fairview Elementary School

Clelia Gladys Cash, Principal  
Fairview Elementary School  
Columbus Municipal School District  
225 Airline Road  
Columbus, MS 39702  
601/328-2000

**OTE Status:** Started 10/10/91;  
actively using OTE

**School Level:** Elementary

**Number of Students:** 389

**Area:** Small City

**Student Population:**

**Composition:** 20% White; 80% Black

**Free/Reduced Lunch:** 80%

**Mobility:** 31%

**Goal:** Not listed

**Start Date:** Not listed

**Goal Status:** Not listed

**Practice Clusters:** Not listed

### 33. Fawcett Elementary School

Kim Johnson, Principal  
Fawcett Elementary School  
Tacoma School District No. 10  
126 East 60th Street  
Tacoma, WA 98404  
206/596-2064

**OTE Status:** Started 9/12/91;  
actively using OTE

**School Level:** Elementary

**Number of Students:** 620

**Area:** Large City

**Student Population:**

**Composition:** 61.9% White; 9.9% Black;  
5.6% Hispanic; 21% Asian or Pacific  
Islander; 1.6% American Indian/Alaska  
Native

**Free/Reduced Lunch:** 55%

**Mobility:** 55%

**Goal:** Student Academic Achievement:  
Reading  
**Start Date:** 1991  
**Goal Status:** Met short-term target  
**Practice Clusters:** Not listed

**34. Ferry Pass Elementary School**

Ruth Gordon, Principal  
Ferry Pass Elementary School  
Escambia School District  
8310 North Davis Highway  
Pensacola, FL 32514  
904/476-3828

**OTE Status:** Started 10/31/90;  
actively using OTE

**School Level:** Elementary  
**Number of Students:** 774  
**Area:** Town/Suburban  
**Student Population:**  
**Composition:** 88% White; 10% Black;  
1% Hispanic; .7% Asian or Pacific  
Islander; .3% American Indian/Alaska  
Native  
**Free/Reduced Lunch:** 38%  
**Mobility:** Not listed

**Goal:** Student Behavior: Discipline Referrals  
**Start Date:** 1990  
**Goal Status:** Progress not yet formally  
assessed  
**Practice Clusters:** 1.2.4; 1.4.2; 2.2.3

**35. Fort Davis Elementary School**

Marty Hoffman, Principal  
Fort Davis Elementary School  
DoDDS  
Panama Region  
APO Miami, FL 34002

**OTE Status:** Started 10/1/87;  
actively using OTE

**School Level:** Elementary  
**Number of Students:** 246  
**Area:** DoDDS

**Student Population:**  
**Composition:** 47% White; 13% Black;  
29% Hispanic; 9% Asian or Pacific  
Islander; 2% American Indian/Alaska  
Native  
**Free/Reduced Lunch:** 0%  
**Mobility:** 30%

**Goal:** Student Academic Achievement:  
Reading  
**Start Date:** 1987  
**Goal Status:** Made some progress toward  
target  
**Practice Clusters:** 1.4.1; 1.4.2; 2.4.2;  
2.5.1; 2.7.1

**36. Fountain Elementary School**

Joyce Anderson, Principal  
Fountain Elementary School  
Pueblo School District 60  
916 North Fountain Avenue  
Pueblo, CO 81001  
719/542-7549

**OTE Status:** Started 3/1/88;  
not actively using OTE

**School Level:** Elementary  
**Number of Students:** 298  
**Area:** Large City  
**Student Population:**  
**Composition:** 54% White; 1% Black;  
44% Hispanic; 1% American Indian/  
Alaska Native  
**Free/Reduced Lunch:** 72%  
**Mobility:** 50%

**37. Franklin Academy**

Robert Sanford, Principal  
Franklin Academy  
Columbus Municipal School District  
501 3rd Avenue North  
Columbus, MS 39701  
601/328-4143

**OTE Status:** Started 10/10/91;  
actively using OTE

**School Level:** Elementary

**Number of Students:** 570

**Area:** Small City

**Student Population:**

**Composition:** 40% White; 56% Black;  
2% Hispanic; 2% Asian or Pacific  
Islander

**Free/Reduced Lunch:** 68%

**Mobility:** 34%

**Goal:** Not listed

**Start Date:** Not listed

**Goal Status:** Not listed

**Practice Clusters:** Not listed

**38. Garfield Elementary School**

Beverly Flaten, Principal  
Garfield Elementary School  
Billings Public Schools  
3212 First Avenue South  
Billings, MT 59101  
406/255-3843

**OTE Status:** Start date not listed;  
actively using OTE

**School Level:** Elementary

**Number of Students:** 440

**Area:** Large City

**Student Population:**

**Composition:** 20% White; 10% Black;  
45% Hispanic; 5% Asian or Pacific  
Islander; 20% American Indian/Alaska  
Native

**Free/Reduced Lunch:** 91%

**Mobility:** 60%

**Goal:** Student Academic Achievement: Math

**Start Date:** 1991

**Goal Status:** Not listed

**Practice Clusters:** 1.2.1; 1.2.2; 1.2.3;  
1.3.2; 1.3.3; 1.3.4; 1.4.1; 1.4.3; 1.6.1;  
2.7.1

**39. Garfield Elementary School**

Darrel Burbank, Principal  
Garfield Elementary School  
Independent District of Boise  
1914 Broadway  
Boise, ID 83706  
208/338-3445

**OTE Status:** Start date not listed;  
actively using OTE

**School Level:** Elementary

**Number of Students:** 670

**Area:** Large City

**Student Population:**

**Composition:** 97% White; 1% Black;  
1% Hispanic; 1% Asian or Pacific  
Islander

**Free/Reduced Lunch:** 48%

**Mobility:** 18%

**Goal:** Student Academic Achievement:

Reading

**Start Date:** 1991

**Goal Status:** Progress not yet formally  
assessed

**Practice Clusters:** Not listed

**40. Gearhart Elementary School**

Doug Ayles, Principal  
 Gearhart Elementary School  
 Seaside School District  
 1002 Pacific Way  
 Gearhart, OR 97138-4299  
 503/738-4299

**OTE Status:** Start date not listed;  
 actively using OTE

**School Level:** Elementary

**Number of Students:** 292

**Area:** Town/Suburban

**Student Population:**

**Composition:** 97% White; 1% Black;  
 1% Hispanic; 1% American Indian/Alaska  
 Native

**Free/Reduced Lunch:** 16%

**Mobility:** Not listed

**Goal:** Not listed

**Start Date:** Not listed

**Goal Status:** Not listed

**Practice Clusters:** Not listed

**41. Golson Elementary School**

Virginia Braxton, Principal  
 Golson Elementary School  
 Jackson County School District  
 4258 Second Avenue  
 Marianna, FL 32446  
 904/482-9607

**OTE Status:** Started 1/31/92;  
 actively using OTE

**School Level:** Elementary

**Number of Students:** 874

**Area:** Small City

**Student Population:**

**Composition:** 63.4% White; 35.8% Black;  
 .5% Hispanic; .1% Asian or Pacific  
 Islander; .2% American Indian/Alaska  
 Native

**Free/Reduced Lunch:** 51%

**Mobility:** 24%

**Goal:** Not listed

**Start Date:** Not listed

**Goal Status:** Not listed

**Practice Clusters:** Not listed

**42. Graceville Elementary School**

Lee Miller, Principal  
 Graceville Elementary School  
 Jackson County School District  
 605 Alabama Street  
 Graceville, FL 32440  
 904/263-4402

**OTE Status:** Started 1/31/92;  
 actively using OTE

**School Level:** Elementary

**Number of Students:** 606

**Area:** Town/Suburban

**Student Population:**

**Composition:** 64% White; 35% Black;  
 1% Hispanic

**Free/Reduced Lunch:** 67%

**Mobility:** 21%

**Goal:** Not listed

**Start Date:** Not listed

**Goal Status:** Not listed

**Practice Clusters:** Not listed

**43. Greenacres Elementary School**

Derold Bates, Principal  
 Greenacres Elementary School  
 25 Pocatello District  
 1250 East Oak  
 Pocatello, ID 83201  
 208/233-2575

**OTE Status:** Started 10/17/91;  
 actively using OTE

**School Level:** Elementary

**Number of Students:** 370

**Area:** Small City

## Elementary Schools

### Student Population:

**Composition:** 94% White; 1.3% Black;  
2.7% Hispanic; 1.3% Asian or Pacific  
Islander; 2.7% American Indian/Alaska  
Native

**Free/Reduced Lunch:** 28%

**Mobility:** 27%

**Goal:** Not listed

**Start Date:** Not listed

**Goal Status:** Not listed

**Practice Clusters:** Not listed

### 44. Hallmark Elementary School

J. P. McLaughlin, Chairman  
Hallmark Elementary School  
Escambia School District  
115 South E Street  
Pensacola, FL 32501  
904/444-2755

**OTE Status:** Started 8/15/91;  
actively using OTE

**School Level:** Elementary

**Number of Students:** 420

**Area:** Large City

**Student Population:**

**Composition:** 9% White; 81% Black;  
1% Hispanic; 9% Asian or Pacific  
Islander

**Free/Reduced Lunch:** 95%

**Mobility:** Not listed

**Goal:** Student Academic Achievement:  
Reading

**Start Date:** 1991

**Goal Status:** Progress not yet formally  
assessed

**Practice Clusters:** 1.1.1; 1.4.2; 1.5.1;  
2.4.2; 2.6.1; 2.7.1

### 45. Happy Corner Elementary School

Stephen Hood, Principal  
Happy Corner Elementary School  
El-Saline Unified School District 307  
1757 North Halstead Road  
Salina, KS 67401  
913/827-8891

**OTE Status:** Started 9/4/91;  
actively using OTE

**School Level:** Elementary

**Number of Students:** 210

**Area:** Rural

**Student Population:**

**Composition:** 95% White; 5% Hispanic

**Free/Reduced Lunch:** 35%

**Mobility:** 10%

**Goal:** Student Academic Achievement: Math

**Start Date:** 1991

**Goal Status:** Progress not yet formally  
assessed

**Practice Clusters:** 1.2.2; 1.3.2; 1.3.5;  
1.4.1; 1.5.1; 1.6.1; 2.2.1

### 46. Henderson Elementary School

William Sarchet, Principal  
Henderson Elementary School  
Adams-Weld County School District 27J  
12301 East 124th Avenue  
Henderson, CO 80640  
303/659-0596

**OTE Status:** Started 9/1/88;  
actively using OTE

**School Level:** Elementary

**Number of Students:** 350

**Area:** Rural

**Student Population:**

**Composition:** 88% White; 12% Hispanic

**Free/Reduced Lunch:** 27%

**Mobility:** 20%

**Goal:** Not listed

**Start Date:** Not listed

**Goal Status:** Not listed

**Practice Clusters:** Not listed

**47. Henry Hill Elementary School**

Glenn Brostrom, Principal  
 Henry Hill Elementary School  
 Central School District 13J  
 750 5th Street  
 Independence, OR 97351-1899  
 503/838-1828

**OTE Status:** Start date not listed;  
 actively using OTE

**School Level:** Elementary  
**Number of Students:** Not listed  
**Area:** Town/Suburban  
**Student Population:**  
**Composition:** 60% White; 40% Hispanic  
**Free/Reduced Lunch:** 55%  
**Mobility:** 16%

**Goal:** Not listed  
**Start Date:** Not listed  
**Goal Status:** Not listed  
**Practice Clusters:** Not listed

**48. Herington Elementary School**

Lawrence Killer, Principal  
 Herington Elementary School  
 Herington Unified School District 487  
 201 East Hawley  
 Herington, KS 67449  
 913/258-3234

**OTE Status:** Started 9/4/91;  
 actively using OTE

**School Level:** Elementary  
**Number of Students:** 300  
**Area:** Rural  
**Student Population:**  
**Composition:** 98% White; 1% Black;  
 1% Hispanic  
**Free/Reduced Lunch:** 38.5%  
**Mobility:** 25%

**Goal:** Student Attitude: Self as Learner  
**Start Date:** 1991  
**Goal Status:** Made some progress toward  
 target  
**Practice Clusters:** 1.4.3; 1.6.1; 2.6.1

**49. Holm Elementary School**

Mary Stanley, Principal  
 Holm Elementary School  
 Escambia School District  
 6101 Lanier Drive  
 Pensacola, FL 32504  
 904/494-5610

**OTE Status:** Started 10/31/90;  
 actively using OTE

**School Level:** Elementary  
**Number of Students:** 770  
**Area:** Large City  
**Student Population:**  
**Composition:** 57% White; 39% Black;  
 1% Hispanic; 2% Asian or Pacific  
 Islander; 1% American Indian/Alaska  
 Native  
**Free/Reduced Lunch:** 52%  
**Mobility:** 21%

**Goal:** Student Academic Achievement:  
 Language Arts  
**Start Date:** 1991  
**Goal Status:** Progress not yet formally  
 assessed  
**Practice Clusters:** 1.2.1; 2.5.1

**50. Hughes Elementary School**

Marshall Wicks, Principal  
 Hughes Elementary School  
 Columbus Municipal School District  
 1820 23rd Street North  
 Columbus, MS 39701  
 601/328-5006

**OTE Status:** Started 10/10/91;  
 actively using OTE

**School Level:** Elementary  
**Number of Students:** 378  
**Area:** Small City  
**Student Population:**  
**Composition:** 42% White; 58% Black  
**Free/Reduced Lunch:** 51%  
**Mobility:** 6%

## Elementary Schools

**Goal:** Student Academic Achievement: Reading

**Start Date:** Not listed

**Goal Status:** Not listed

**Practice Clusters:** 1.1.1; 1.2.1; 1.2.2;  
1.2.3; 1.2.4; 1.3.1; 1.3.2; 1.3.3; 1.3.4;  
1.3.5; 1.4.1; 1.4.2; 1.4.3; 1.5.1; 1.6.1;  
2.1.1; 2.1.2; 2.2.1; 2.2.2; 2.2.4; 2.3.1;  
2.3.2; 2.3.3; 2.4.1; 2.4.2; 2.5.1; 2.6.1;  
2.7.1

### 51. Hygiene Elementary School

Wayne Stone, Principal  
Hygiene Elementary School  
St. Vrain Valley Public Schools  
11968 North 75th Street  
Hygiene, CO 80533  
303/776-0855

**OTE Status:** Started 9/1/85;  
actively using OTE

**School Level:** Elementary  
**Number of Students:** 470

**Area:** Rural

**Student Population:**

**Composition:** 98% White; 1% Hispanic;  
1% Asian or Pacific Islander

**Free/Reduced Lunch:** 10%

**Mobility:** 6%

**Goal:** Student Academic Achievement: Math  
**Start Date:** 1985

**Goal Status:** Met short-term target

**Practice Clusters:** 1.1.1; 1.2.1; 1.2.2;  
1.2.3; 1.2.4; 1.3.1; 1.3.2; 1.3.3; 1.3.4;  
1.3.5; 1.4.1; 1.4.3; 1.5.1; 1.6.1; 2.1.1;  
2.1.2; 2.2.1; 2.2.2; 2.2.3; 2.2.4; 2.3.1;  
2.3.2; 2.3.3; 2.4.1; 2.5.1; 2.6.1; 2.7.1

### 52. Independence Elementary School

Laticia Antonson, Principal  
Independence Elementary School  
Central School District 13J  
150 South 4th Street  
Independence, OR 97351-2099  
503/838-1322

**OTE Status:** Start date not listed;  
actively using OTE

**School Level:** Elementary

**Number of Students:** 320

**Area:** Rural

**Student Population:**

**Composition:** Not listed

**Free/Reduced Lunch:** Not listed

**Mobility:** Not listed

**Goal:** Student Behavior: Improved  
School-Home Communication

**Start Date:** 1991

**Goal Status:** Progress not yet formally  
assessed

**Practice Clusters:** 1.1.1; 1.2.2; 1.2.3;  
1.2.4; 1.4.3; 1.5.1; 2.1.1; 2.1.2; 2.2.3;  
2.3.1; 2.3.2; 2.4.2; 2.5.1; 2.7.1

### 53. Jefferson Elementary School

Phil Meager, Principal  
Jefferson Elementary School  
Medford School District No. 549  
333 Holmes Avenue  
Medford, OR 97501  
503/776-8845

**OTE Status:** Start date not listed;  
actively using OTE

**School Level:** Elementary

**Number of Students:** 465

**Area:** Large City

**Student Population:**

**Composition:** 87% White; 1% Black;  
8% Hispanic; 2% Asian or Pacific  
Islander; 2% American Indian/Alaska  
Native

**Free/Reduced Lunch:** 36%

**Mobility:** 15%



**Goal:** Student Academic Achievement: Writing  
**Start Date:** 1990  
**Goal Status:** Made some progress toward target  
**Practice Clusters:** Not listed

**54. Jim Allen Elementary School**

Hubert Williford, Principal  
 Jim Allen Elementary School  
 Escambia School District  
 1051 Highway 95A North  
 Cantonment, FL 32533  
 904/968-9671

**OTE Status:** Started 8/26/91;  
 actively using OTE

**School Level:** Elementary  
**Number of Students:** 800  
**Area:** Town/Suburban  
**Student Population:**  
**Composition:** 83% White; 16% Black;  
 1% Hispanic  
**Free/Reduced Lunch:** 55%  
**Mobility:** 10%

**Goal:** Student Academic Achievement:  
 Reading  
**Start Date:** 1991  
**Goal Status:** Met short-term target  
**Practice Clusters:** 1.1.1; 1.2.2; 1.2.3;  
 1.2.4; 1.3.1; 1.3.2; 1.3.5; 1.4.2; 1.6.1;  
 2.1.2; 2.2.2; 2.2.3; 2.2.4; 2.3.1; 2.3.2;  
 2.3.3; 2.4.1; 2.4.2; 2.5.1; 2.6.1; 2.7.1

**55. Koelsch Elementary School**

Carol Coate, Principal  
 Koelsch Elementary School  
 Independent District of Boise  
 2015 North Curtis  
 Boise, ID 83706  
 208/322-3812

**OTE Status:** Start date not listed;  
 actively using OTE

**School Level:** Elementary  
**Number of Students:** 425  
**Area:** Large City  
**Student Population:**  
**Composition:** 94.7% White; 1.4% Black;  
 2.4% Hispanic; 1% Asian or Pacific  
 Islander; .5% American Indian/Alaska  
 Native  
**Free/Reduced Lunch:** Not listed  
**Mobility:** 10%

**Goal:** Not listed  
**Start Date:** Not listed  
**Goal Status:** Not listed  
**Practice Clusters:** Not listed

**56. LaBelle Elementary School**

Joann Patterson, Principal  
 LaBelle Elementary School  
 Hendry County School District  
 PO Box 1860  
 LaBelle, FL 33935  
 813/675-2571

**OTE Status:** Started 11/19/91;  
 actively using OTE

**School Level:** Elementary  
**Number of Students:** 940  
**Area:** Town/Suburban  
**Student Population:**  
**Composition:** 56% White; 9% Black;  
 35% Hispanic  
**Free/Reduced Lunch:** 63%  
**Mobility:** 18%

*Elementary Schools*

**Goal:** Not listed  
**Start Date:** Not listed  
**Goal Status:** Not listed  
**Practice Clusters:** Not listed

**57. Lewis & Clark Elementary School**

Mary Ann Cosgrove, Principal  
Lewis & Clark Elementary School  
Great Falls Public Schools  
3800 1st Avenue South  
Great Falls, MT 59403  
406/791-2208

**OTE Status:** Started 9/1/88;  
actively using OTE

**School Level:** Elementary  
**Number of Students:** Not listed  
**Area:** Small City  
**Student Population:**  
**Composition:** 94% White; 2% Black;  
1% Hispanic; 1% Asian or Pacific  
Islander; 2% American Indian/Alaska  
Native  
**Free/Reduced Lunch:** 34%  
**Mobility:** 46%

**Goal:** Student Academic Achievement:  
Reading  
**Start Date:** 1988  
**Goal Status:** Made some progress toward  
target  
**Practice Clusters:** 1.4.1; 1.5.1

**58. Lincoln Elementary School**

Dean Collins, Principal  
Lincoln Elementary School  
Lincoln Unified School District 298  
302 South 4th  
Lincoln, KS 67455  
913/524-4487

**OTE Status:** Started 9/5/91;  
actively using OTE

**School Level:** Elementary  
**Number of Students:** 230  
**Area:** Rural  
**Student Population:**  
**Composition:** 100% White  
**Free/Reduced Lunch:** 30%  
**Mobility:** 5%

**Goal:** Student Attitude: School as Place to  
Learn  
**Start Date:** 1991  
**Goal Status:** Little or no progress  
**Practice Clusters:** Not listed

**59. Lincoln Park Elementary School**

Deborah Malishan, Principal  
Lincoln Park Elementary School  
Escambia School District  
7600 Kershaw Street  
Pensacola, FL 32534  
904/494-5620

**OTE Status:** Started 10/31/90;  
actively using OTE

**School Level:** Elementary  
**Number of Students:** 535  
**Area:** Town/Suburban  
**Student Population:**  
**Composition:** 10% White; 90% Black  
**Free/Reduced Lunch:** 87%  
**Mobility:** 16%

**Goal:** Student Academic Achievement:  
Reading  
**Start Date:** 1990  
**Goal Status:** Met short-term target  
**Practice Clusters:** 1.2.4; 1.3.2

**60. Lister Elementary School**

Sharon Krause, Principal  
 Lister Elementary School  
 Tacoma School District No. 10  
 2106 East 44th  
 Tacoma, WA 98328  
 206/596-2066

**OTE Status:** Started 9/12/91;  
 actively using OTE

**School Level:** Elementary

**Number of Students:** 532

**Area:** Large City

**Student Population:**

**Composition:** 52% White; 10% Black;  
 2% Hispanic; 34% Asian or Pacific  
 Islander; 2% American Indian/Alaska  
 Native

**Free/Reduced Lunch:** 78%

**Mobility:** 41%

**Goal:** Student Academic Achievement:  
 Reading

**Start Date:** 1991

**Goal Status:** Progress not yet formally  
 assessed

**Practice Clusters:** 1.2.1; 1.4.3; 2.6.1

**61. Longleaf Elementary School**

Ernest Thorne, Principal  
 Longleaf Elementary School  
 Escambia School District  
 2600 Longleaf Drive  
 Pensacola, FL 32526  
 904/944-0043

**OTE Status:** Started 10/31/90;  
 actively using OTE

**School Level:** Elementary

**Number of Students:** 885

**Area:** Town/Suburban

**Student Population:**

**Composition:** 68.7% White; 28.9% Black;  
 .5% Hispanic; 1.5% Asian or Pacific  
 Islander; .5% American Indian/Alaska  
 Native

**Free/Reduced Lunch:** 45%

**Mobility:** 18%

**Goal:** Student Attitude: Self as Learner

**Start Date:** 1990

**Goal Status:** Progress not yet formally  
 assessed

**Practice Clusters:** 1.4.2; 1.4.3; 2.4.2; 2.7.1

**62. Loy Elementary School**

Les Duncan, Principal  
 Loy Elementary School  
 Great Falls Public Schools  
 501 57th Street North  
 Great Falls, MT 59400  
 406/791-2243

**OTE Status:** Started 9/1/88;  
 actively using OTE

**School Level:** Elementary

**Number of Students:** 580

**Area:** Large City

**Student Population:**

**Composition:** 85% White; 10% Black;  
 2% Hispanic; 2% Asian or Pacific  
 Islander; 1% American Indian/Alaska  
 Native

**Free/Reduced Lunch:** Not listed

**Mobility:** 40%

**Goal:** Student Academic Achievement:  
 Reading

**Start Date:** 1989

**Goal Status:** Met short-term target

**Practice Clusters:** 1.1.1; 1.2.2; 1.3.2; 1.5.1

**63. Malad Elementary School**

Dottie Evanson,  
 Malad Elementary School  
 351 Oneida County District  
 250 West 4th North Street  
 Malad, ID 83252  
 208/766-2255

**OTE Status:** Started 12/1/87;  
 actively using OTE

**School Level:** Elementary

**Number of Students:** 480

**Area:** Rural

## Elementary Schools

### Student Population:

**Composition:** 99% White; 1% Hispanic

**Free/Reduced Lunch:** 30%

**Mobility:** 2%

**Goal:** Student Academic Achievement: Math

**Start Date:** 1991

**Goal Status:** Progress not yet formally assessed

**Practice Clusters:** 1.3.5; 1.5.1; 1.6.1

### 64. Marion Park School

Sherry Morgan, Principal

Marion Park School

Meridian Public Schools

2815 25th Street

Meridian, MS 39305

601/484-4977

**OTE Status:** Started 8/15/84;  
actively using OTE

**School Level:** Elementary

**Number of Students:** 311

**Area:** Small City

**Student Population:**

**Composition:** 5% White; 95% Black

**Free/Reduced Lunch:** 86%

**Mobility:** 8%

**Goal A:** Student Academic Achievement:  
Reading

**Start Date:** 1991

**Goal Status:** Progress not yet formally assessed

**Practice Clusters:** 1.1.1; 1.2.1; 1.2.2;  
1.2.3; 1.3.1; 1.3.4; 1.3.5; 1.4.2; 1.5.1;  
1.6.1; 2.1.1; 2.1.2; 2.2.1; 2.3.2

**Goal B:** Student Academic Achievement: Math

**Start Date:** 1991

**Goal Status:** Progress not yet formally assessed

**Practice Clusters:** 1.1.1; 1.2.1; 1.2.2;  
1.2.3; 1.3.1; 1.3.4; 1.3.5; 1.4.2; 1.5.1;  
1.6.1; 2.1.1; 2.1.2; 2.2.1; 2.3.2

**Goal C:** Student Behavior: Responsible Learner

**Start Date:** 1991

**Goal Status:** Not listed

**Practice Clusters:** 1.2.3; 1.2.4; 1.4.2;  
1.4.3; 1.6.1; 2.1.1; 2.2.1; 2.2.3; 2.2.4;  
2.4.2; 2.6.1

### 65. Maude Saunders Elementary School

Hazel Collinsworth, Assistant Principal

Maude Saunders Elementary School

Walton County School District

Route 8; Box 595

DeFuniak Springs, FL 32433

904/892-3581

**OTE Status:** Started 9/5/91;  
actively using OTE

**School Level:** Elementary

**Number of Students:** 731

**Area:** Town/Suburban

**Student Population:**

**Composition:** 74.9% White; 24.7% Black;  
.4% Asian or Pacific Islander

**Free/Reduced Lunch:** 57%

**Mobility:** 10%

**Goal:** Student Behavior: Discipline Referrals

**Start Date:** 1991

**Goal Status:** Progress not yet formally assessed

**Practice Clusters:** Not listed

### 66. McArthur Elementary School

Martha Lyle, Principal

McArthur Elementary School

Escambia School District

330 East Ten Mile Road

Pensacola, FL 32534

904/494-5625

**OTE Status:** Started 9/1/91;  
actively using OTE

**School Level:** Elementary

**Number of Students:** 1180

**Area:** Town/Suburban

**Student Population:**

**Composition:** 87% White; 12% Black;  
1% Hispanic

**Free/Reduced Lunch:** 31%

**Mobility:** 10%

**Goal:** Not listed

**Start Date:** Not listed

**Goal Status:** Not listed

**Practice Clusters:** Not listed

**67. McCarver Elementary School**

Dorothy Dedrick, Principal  
McCarver Elementary School  
Tacoma School District No. 10  
2111 South J Street  
Tacoma, WA 98405  
206/596-1390

**OTE Status:** Started 9/12/91;  
actively using OTE

**School Level:** Elementary

**Number of Students:** 630

**Area:** Large City

**Student Population:**

**Composition:** 50.4% White; 27.3% Black;  
3.6% Hispanic; 17.2% Asian or Pacific  
Islander; 1.5% American Indian/Alaska  
Native

**Free/Reduced Lunch:** 71%

**Mobility:** 63%

**Goal:** Student Behavior: Reducing Classroom  
Disruptions

**Start Date:** 1991

**Goal Status:** Progress not yet formally  
assessed

**Practice Clusters:** 1.2.4; 2.2.3

**68. Meadowlark Elementary School**

Ernie Carbajal, Principal  
Meadowlark Elementary School  
Eugene School District No. 4J  
1500 Queens Way  
Eugene, OR 97401  
503/687-3368

**OTE Status:** Started 10/1/89;  
not actively using OTE

**School Level:** Elementary

**Number of Students:** 225

**Area:** Large City

**Student Population:**

**Composition:** 83% White; 1% Black;  
4% Hispanic; 10% Asian or Pacific  
Islander; 2% American Indian/Alaska  
Native

**Free/Reduced Lunch:** 25%

**Mobility:** 15%

**69. Mitchell Elementary School**

George Brooks, Principal  
Mitchell Elementary School  
Columbus Municipal School District  
1315 South 15th Street  
Columbus, MS 39701  
601/328-3679

**OTE Status:** Started 10/10/91;  
actively using OTE

**School Level:** Elementary

**Number of Students:** 255

**Area:** Small City

**Student Population:**

**Composition:** 30% White; 70% Black

**Free/Reduced Lunch:** 90%

**Mobility:** 37%

**Goal:** Not listed

**Start Date:** Not listed

**Goal Status:** Not listed

**Practice Clusters:** Not listed

*Elementary Schools*

**70. Molalla Grade School**

Jim Swan, Principal  
Molalla Grade School  
Molalla School District 35  
PO Box 225  
Molalla, OR 97038  
503/829-6133

**OTE Status:** Started 9/1/91;  
actively using OTE

**School Level:** Elementary

**Number of Students:** 858

**Area:** Town/Suburban

**Student Population:**

**Composition:** 95.1% White; .5% Black;  
4% Hispanic; .1% Asian or Pacific  
Islander; .4% American Indian/Alaska  
Native

**Free/Reduced Lunch:** 29%

**Mobility:** 41%

**Goal:** Student Attitude: School as Place to  
Learn

**Start Date:** 1991

**Goal Status:** Progress not yet formally  
assessed

**Practice Clusters:** 1.2.4; 1.4.3

**71. Molalla Primary School**

Ray Halter, Principal  
Molalla Primary School  
Molalla School District 35  
PO Box 206  
Molalla, OR 97038  
503/829-4333

**OTE Status:** Start date not listed;  
actively using OTE

**School Level:** Elementary

**Number of Students:** 451

**Area:** Town/Suburban

**Student Population:**

**Composition:** 99% White; .5% Asian or  
Pacific Islander; .5% American Indian/  
Alaska Native

**Free/Reduced Lunch:** 38%

**Mobility:** 19%

**Goal:** Student Academic Achievement:  
Reading

**Start Date:** 1991

**Goal Status:** Not listed

**Practice Clusters:** Not listed

**72. Molino Elementary School**

Helen Adams, Principal  
Molino Elementary School  
Escambia School District  
6450 Highway 95 A N  
Cantonment, FL 32514  
904/587-5265

**OTE Status:** Started 10/31/90;  
actively using OTE

**School Level:** Elementary

**Number of Students:** 231

**Area:** Rural

**Student Population:**

**Composition:** 60% White; 40% Black

**Free/Reduced Lunch:** 76%

**Mobility:** 10%

**Goal:** Student Academic Achievement:  
Reading

**Start Date:** 1989

**Goal Status:** Progress not yet formally  
assessed

**Practice Clusters:** 1.2.1; 1.2.2; 1.3.2;  
1.5.1; 2.6.1

**73. Monmouth Elementary School**

Richard Beight, Principal  
Monmouth Elementary School  
Central School District 13J  
958 East Church Street  
Monmouth, OR 97361-1699  
503/838-1433

**OTE Status:** Start date not listed;  
actively using OTE

**School Level:** Elementary

**Number of Students:** 525

**Area:** Town/Suburban

**Student Population:**

**Composition:** 81% White; 2% Black;  
10% Hispanic; 10% Asian or Pacific  
Islander; 1% American Indian/Alaska  
Native

**Free/Reduced Lunch:** 27%

**Mobility:** Not listed

**Goal:** Not listed

**Start Date:** Not listed

**Goal Status:** Not listed

**Practice Clusters:** Not listed

**74. Mont Downing Elementary School**

Daryl R. Ashpole, Principal  
Mont Downing Elementary School  
Tacoma School District No. 10  
2502 North Orchard  
Tacoma, WA 98406  
206/596-2253

**OTE Status:** Started 9/1/90;  
actively using OTE

**School Level:** Elementary

**Number of Students:** 475

**Area:** Large City

**Student Population:**

**Composition:** 82% White; 9% Black;  
3% Hispanic; 5% Asian or Pacific  
Islander; 1% American Indian/Alaska  
Native

**Free/Reduced Lunch:** 30%

**Mobility:** 23%

**Goal:** Student Academic Achievement: Critical  
Thinking

**Start Date:** 1990

**Goal Status:** Made some progress toward  
target

**Practice Clusters:** 1.3.3; 1.4.1; 2.3.2; 2.3.3

**75. Montclair Elementary School**

Joan Ennis, Principal  
Montclair Elementary School  
Escambia School District  
820 Massachusetts Avenue  
Pensacola, FL 32505  
904/444-2434

**OTE Status:** Started 8/30/90;  
actively using OTE

**School Level:** Elementary

**Number of Students:** 682

**Area:** Large City

**Student Population:**

**Composition:** 43% White; 57% Black

**Free/Reduced Lunch:** 81%

**Mobility:** 26%

**Goal:** Not listed

**Start Date:** Not listed

**Goal Status:** Not listed

**Practice Clusters:** Not listed

**76. Myrtle Grove Elementary School**

Sandra Edwards, Principal  
Myrtle Grove Elementary School  
Escambia School District  
6115 Lillian Highway  
Pensacola, FL 32506  
904/455-3533

**OTE Status:** Started 10/31/90;  
actively using OTE

**School Level:** Elementary

**Number of Students:** 700

**Area:** Large City

**Student Population:**

**Composition:** 84% White; 11% Black;  
1% Hispanic; 4% Asian or Pacific  
Islander

**Free/Reduced Lunch:** 47%

**Mobility:** 22%

## Elementary Schools

**Goal:** Student Academic Achievement:  
Reading  
**Start Date:** 1990  
**Goal Status:** Progress not yet formally  
assessed  
**Practice Clusters:** 2.3.3; 2.5.1; 2.7.1

### 77. Navy Point Elementary School

Sally Speak, Curriculum Coordinator  
Navy Point Elementary School  
Escambia School District  
1321 Patton Drive  
Pensacola, FL 32507  
904/453-7415

**OTE Status:** Started 10/31/90;  
actively using OTE

**School Level:** Elementary  
**Number of Students:** 551  
**Area:** Town/Suburban  
**Student Population:**  
**Composition:** 56.3% White; 34.8% Black;  
2.9% Hispanic; 6% Asian or Pacific  
Islander  
**Free/Reduced Lunch:** 71.6%  
**Mobility:** 58.4%

**Goal:** Student Academic Achievement:  
Reading  
**Start Date:** 1990  
**Goal Status:** Progress not yet formally  
assessed  
**Practice Clusters:** 2.3.3; 2.4.2; 2.7.1

### 78. New Hope Elementary School

Sammy Townsend, Principal  
New Hope Elementary School  
Lowndes County School District  
199 Enlow Drive  
Columbus, MS 39702  
601/327-3801

**OTE Status:** Started 10/10/91;  
actively using OTE

**School Level:** Elementary  
**Number of Students:** 1448  
**Area:** Town/Suburban  
**Student Population:**  
**Composition:** 70% White; 30% Black  
**Free/Reduced Lunch:** 30%  
**Mobility:** 19%

**Goal:** Student Behavior: Discipline Referrals  
**Start Date:** 1991  
**Goal Status:** Not listed  
**Practice Clusters:** 1.2.3; 1.2.4; 1.4.1;  
1.4.2; 2.2.3; 2.2.4; 2.3.1; 2.4.1; 2.4.2;  
2.5.1; 2.7.1

### 79. North Albany Elementary School

Diane Sievers, Teacher  
North Albany Elementary School  
Greater Albany District 8J  
815 NW Thornton Lake Drive  
Albany, OR 97321  
503/967-4588

**OTE Status:** Started 2/27/91;  
actively using OTE

**School Level:** Elementary  
**Number of Students:** 230  
**Area:** Small City  
**Student Population:**  
**Composition:** 96% White; 1% Hispanic;  
1% Asian or Pacific Islander; 2% Ameri-  
can Indian/Alaska Native  
**Free/Reduced Lunch:** Not listed  
**Mobility:** Not listed



**Goal:** Student Attitude: School as Place to Learn  
**Start Date:** 1990  
**Goal Status:** Progress not yet formally assessed  
**Practice Clusters:** 2.2.3; 2.2.4; 2.4.2

**80. North Douglas Elementary School**

Dorothy Keechi, Principal  
 North Douglas Elementary School  
 North Douglas School District No. 22  
 PO Box 338  
 Drain, OR 97435  
 503/836-2213

**OTE Status:** Started 2/15/88;  
 actively using OTE

**School Level:** Elementary  
**Number of Students:** 355  
**Area:** Rural  
**Student Population:**  
**Composition:** 99.9% White; .1% Other  
**Free/Reduced Lunch:** 55%  
**Mobility:** 25%

**Goal:** Student Behavior: Discipline Referrals  
**Start Date:** 1988  
**Goal Status:** Progress not yet formally assessed  
**Practice Clusters:** 1.1.1; 1.2.1; 1.2.2;  
 1.2.3; 1.2.4; 1.3.2; 1.4.1; 1.4.2; 1.5.1;  
 1.6.1; 2.1.1; 2.2.3; 2.3.3; 2.4.1; 2.4.2;  
 2.7.1

**81. Nyssa Elementary School**

Dan Weeks, Principal  
 Nyssa Elementary School  
 Nyssa School District No. 26  
 1 North 7th Street  
 Nyssa, OR 97913  
 503/372-3313

**OTE Status:** Started 9/1/89;  
 actively using OTE

**School Level:** Elementary  
**Number of Students:** Not listed  
**Area:** Rural  
**Student Population:**  
**Composition:** 44% White; 54% Hispanic;  
 2% Asian or Pacific Islander  
**Free/Reduced Lunch:** 66%  
**Mobility:** 33%

**Goal:** Student Behavior: At-Risk Behavior  
**Start Date:** 1991  
**Goal Status:** Made some progress toward target  
**Practice Clusters:** 1.1.1; 1.2.4; 1.3.1;  
 1.3.2; 1.3.3; 1.3.4; 1.3.5; 1.4.1; 1.4.2;  
 1.4.3; 1.5.1; 1.6.1; 2.1.1; 2.1.2; 2.2.1;  
 2.2.2; 2.2.3; 2.2.4; 2.3.1; 2.3.2; 2.3.3;  
 2.4.1; 2.4.2; 2.5.1; 2.6.1; 2.7.1

**82. Oak Grove Elementary School**

Emily Clemens, OTE Contact Person  
 Oak Grove Elementary School  
 Central School District 13J  
 2700 Oak Grove Road  
 Rickreall, OR 97371-9705  
 503/362-3345

**OTE Status:** Started 9/15/91;  
 actively using OTE

**School Level:** Elementary  
**Number of Students:** 34  
**Area:** Rural  
**Student Population:**  
**Composition:** 100% White  
**Free/Reduced Lunch:** 5%  
**Mobility:** 20%

## Elementary Schools

**Goal:** Student Academic Achievement:  
Reading

**Start Date:** 1991

**Goal Status:** Progress not yet formally  
assessed

**Practice Clusters:** Not listed

### 83. Oakridge Elementary School

Michael Lambert, Principal  
Oakridge Elementary School  
Oakridge School District No. 76  
48119 West 1st Street  
Oakridge, OR 97463  
503/782-3226

**OTE Status:** Start date not listed;  
actively using OTE

**School Level:** Elementary

**Number of Students:** 380

**Area:** Town/Suburban

**Student Population:**

**Composition:** 62% White; 1% Black;  
18% Hispanic; 1% Asian or Pacific  
Islander; 18% American Indian/Alaska  
Native

**Free/Reduced Lunch:** 60%

**Mobility:** 10%

**Goal:** Student Academic Achievement:  
Reading

**Start Date:** 1990

**Goal Status:** Progress not yet formally  
assessed

**Practice Clusters:** 1.4.1; 1.5.1; 1.6.1

### 84. Oakwood Elementary School

Jerry T. Waddoups, Principal  
Oakwood Elementary School  
201 Preston Joint District  
525 South 4th East  
Preston, ID 83263  
208/852-2233

**OTE Status:** Started 12/1/87;  
actively using OTE

**School Level:** Elementary

**Number of Students:** 715

**Area:** Town/Suburban

**Student Population:**

**Composition:** 98% White; 1% Black;  
1% Hispanic

**Free/Reduced Lunch:** 25%

**Mobility:** 5%

**Goal:** Student Academic Achievement: Whole  
Language

**Start Date:** 1988

**Goal Status:** Made some progress toward  
target

**Practice Clusters:** 1.2.1; 1.2.2; 1.2.3;  
1.3.3; 1.4.1; 1.4.3; 1.6.1; 2.1.1; 2.2.1;  
2.2.2; 2.3.3; 2.5.1

### 85. Pensacola Beach Elementary School

Linda Longacre, Principal  
Pensacola Beach Elementary School  
Escambia School District  
900 Via De Luna Drive  
Gulf Breeze, FL 32561  
904/932-5346

**OTE Status:** Started 10/31/90;  
actively using OTE

**School Level:** Elementary

**Number of Students:** 150

**Area:** Town/Suburban

**Student Population:**

**Composition:** 100% White

**Free/Reduced Lunch:** 5%

**Mobility:** 46%

**Goal:** Student Academic Achievement: Math  
**Start Date:** 1990  
**Goal Status:** Progress not yet formally assessed  
**Practice Clusters:** 1.2.2; 2.5.1

### 86. Philomath Elementary School

Rod Harvey, Principal  
 Philomath Elementary School  
 Philomath School District No. 17J  
 PO Box 71  
 Philomath, OR 97370  
 503/929-3253

**OTE Status:** Started 10/1/90;  
 actively using OTE

**School Level:** Elementary  
**Number of Students:** 502  
**Area:** Rural  
**Student Population:**

**Composition:** 95.5% White; .5% Black;  
 1% Hispanic; 2% Asian or Pacific  
 Islander; 1% American Indian/Alaska  
 Native

**Free/Reduced Lunch:** 11%  
**Mobility:** 12%

**Goal:** Student Behavior: Discipline Referrals  
**Start Date:** 1991  
**Goal Status:** Made some progress toward target  
**Practice Clusters:** 1.2.4; 1.4.1; 2.2.3;  
 2.3.1; 2.7.1

### 87. Pilot Rock Elementary School

Jim Labrousse, Principal  
 Pilot Rock Elementary School  
 Pilot Rock School District No. 2  
 PO Box A  
 Pilot Rock, OR 97868  
 503/443-2361

**OTE Status:** Started 9/1/88;  
 not actively using OTE

**School Level:** Elementary  
**Number of Students:** 300  
**Area:** Rural  
**Student Population:**

**Composition:** 95% White; 1% Black;  
 1% Hispanic; 3% American Indian/Alaska  
 Native

**Free/Reduced Lunch:** 18%  
**Mobility:** Not listed

### 88. Pine Meadow Elementary School

Robert Cary, Principal  
 Pine Meadow Elementary School  
 Escambia School District  
 10001 Omar Avenue  
 Pensacola, FL 32534  
 904/494-5630

**OTE Status:** Started 2/26/91;  
 actively using OTE

**School Level:** Elementary  
**Number of Students:** 803  
**Area:** Large City  
**Student Population:**

**Composition:** 85% White; 15% Black  
**Free/Reduced Lunch:** 23%  
**Mobility:** 10%

**Goal:** Not listed  
**Start Date:** 1991  
**Goal Status:** Progress not yet formally assessed  
**Practice Clusters:** 1.1.1; 1.2.1; 1.3.2;  
 1.3.4; 1.3.5; 1.4.1; 1.4.2; 1.4.3; 2.1.1;  
 2.2.2; 2.2.4; 2.3.1; 2.3.2; 2.3.3; 2.4.1;  
 2.4.2; 2.6.1; 2.7.1

## Elementary Schools

### 89. Pioneer Elementary School

Jim Skeesuck, Principal  
Pioneer Elementary School  
Ontario School District No. 8  
Route 2  
Ontario, OR 97914  
503/262-3902

**OTE Status:** Started 9/1/89;  
actively using OTE

**School Level:** Elementary

**Number of Students:** 141

**Area:** Town/Suburban

**Student Population:**

**Composition:** 86% White; 14% Hispanic

**Free/Reduced Lunch:** 46%

**Mobility:** 13%

**Goal:** Student Academic Achievement:  
Spelling

**Start Date:** 1987

**Goal Status:** Made some progress toward  
target

**Practice Clusters:** 1.2.2; 1.2.3; 1.3.2;  
1.3.4; 1.3.5; 1.4.1; 1.4.2; 1.4.3; 1.5.1;  
2.1.1; 2.2.2; 2.3.2; 2.3.3; 2.4.1; 2.4.2;  
2.5.1

### 90. Ponce De Leon Elementary School

Thomas Stanley, Principal  
Ponce De Leon Elementary School  
Holmes County School District  
Route 2; Box 2236  
Ponce De Leon, FL 32455  
904/836-4296

**OTE Status:** Start date not listed;  
actively using OTE

**School Level:** Elementary

**Number of Students:** 390

**Area:** Rural

**Student Population:**

**Composition:** 97.4% White; 2.6% Hispanic

**Free/Reduced Lunch:** 65%

**Mobility:** Not listed

**Goal:** Not listed

**Start Date:** Not listed

**Goal Status:** Not listed

**Practice Clusters:** Not listed

### 91. Ridgewood Elementary School

Barbara Marrion, Principal  
Ridgewood Elementary School  
Beaverton School District No. 48J  
PO Box 200  
Beaverton, OR 97075  
503/591-4554

**OTE Status:** Started 9/15/86;  
actively using OTE

**School Level:** Elementary

**Number of Students:** 397

**Area:** Town/Suburban

**Student Population:**

**Composition:** 95% White; 2% Black;  
3% Asian or Pacific Islander

**Free/Reduced Lunch:** Not listed

**Mobility:** 5%

**Goal:** Student Behavior

**Start Date:** 1987

**Goal Status:** Met long-term standard

**Practice Clusters:** 1.6.1; 2.1.1; 2.2.2;  
2.2.3; 2.3.2; 2.3.3; 2.4.1; 2.7.1

### 92. Riveria Elementary School

Meg Valentine, Principal  
Riveria Elementary School  
La Grande School District No. 1  
2607 2nd Street  
La Grande, OR 97850  
503/963-1945

**OTE Status:** Started 5/1/88;  
actively using OTE

**School Level:** Elementary

**Number of Students:** 220

**Area:** Town/Suburban

**Student Population:**

**Composition:** 99% White  
**Free/Reduced Lunch:** 36%  
**Mobility:** Not listed

**Goal:** Student Academic Achievement:  
 Reading

**Start Date:** 1988  
**Goal Status:** met short-term target  
**Practice Clusters:** 1.3.2; 1.3.5; 2.3.3; 2.4.1

**93. Rocky Heights Elementary School**

Sheri Gannon, Principal  
 Rocky Heights Elementary School  
 Hermiston School District No. 8  
 650 West Standard Avenue  
 Hermiston, OR 97838  
 503/567-8121

**OTE Status:** Started 8/1/88;  
 not actively using OTE

**School Level:** Elementary  
**Number of Students:** 525  
**Area:** Town/Suburban  
**Student Population:**  
**Composition:** 77% White; 2% Black;  
 19% Hispanic; 2% Asian or Pacific  
 Islander  
**Free/Reduced Lunch:** 48%  
**Mobility:** 41%

**94. Rogers Elementary School**

Lei Lani Jackson, Principal  
 Rogers Elementary School  
 Tacoma School District No. 10  
 1301 East 34th Street  
 Tacoma, WA 98404  
 206/596-1380

**OTE Status:** Started 9/13/91;  
 actively using OTE

**School Level:** Elementary  
**Number of Students:** 458  
**Area:** Large City

**Student Population:**

**Composition:** 62.3% White; 15.5% Black;  
 5.6% Hispanic; 11.3% Asian or Pacific  
 Islander; 5% American Indian/Alaska  
 Native  
**Free/Reduced Lunch:** 65%  
**Mobility:** 63.1%

**Goal:** Student Academic Achievement:  
 Reading

**Start Date:** 1991  
**Goal Status:** Not listed  
**Practice Clusters:** 1.1.1; 1.3.2; 1.5.1

**95. Roosevelt Elementary School**

Donald Kvamme, Principal  
 Roosevelt Elementary School  
 Tacoma School District No. 10  
 3550 East Roosevelt Avenue  
 Tacoma, WA 98404-4799  
 206/596-1410

**OTE Status:** Started 9/1/90;  
 actively using OTE

**School Level:** Elementary  
**Number of Students:** 459  
**Area:** Large City  
**Student Population:**  
**Composition:** 52% White; 18% Black;  
 4% Hispanic; 19% Asian or Pacific  
 Islander; 7% American Indian/Alaska  
 Native  
**Free/Reduced Lunch:** 75%  
**Mobility:** 39%

**Goal:** Student Attitude: Student Self-Concept  
**Start Date:** Not listed  
**Goal Status:** Progress not yet formally  
 assessed  
**Practice Clusters:** 1.2.1; 1.4.2; 1.4.3; 2.4.2

*Elementary Schools*

**96. Sale Elementary School**

Rebecca Taylor, Principal  
Sale Elementary School  
Columbus Municipal School District  
520 Warpath Road  
Columbus, MS 39702  
601/327-1482

**OTE Status:** Started 10/10/91;  
actively using OTE

**School Level:** Elementary  
**Number of Students:** 270  
**Area:** Small City  
**Student Population:**  
**Composition:** 60% White; 40% Black  
**Free/Reduced Lunch:** 70%  
**Mobility:** 32%

**Goal:** Not listed  
**Start Date:** Not listed  
**Goal Status:** Not listed  
**Practice Clusters:** Not listed

**97. Sam Case Elementary School**

Ron Corbell, Principal  
Sam Case Elementary School  
Lincoln County School District  
459 NE 12th Street  
Newport, OR 97365  
503/265-8598

**OTE Status:** Started 10/1/90;  
actively using OTE

**School Level:** Elementary  
**Number of Students:** 550  
**Area:** Town/Suburban  
**Student Population:**  
**Composition:** 95% White; 1% Black;  
1.5% Hispanic; 1% Asian or Pacific  
Islander; 1.5% American Indian/Alaska  
Native  
**Free/Reduced Lunch:** 32%  
**Mobility:** 15%

**Goal:** Student Academic Achievement:  
Reading  
**Start Date:** 1990  
**Goal Status:** Progress not yet formally  
assessed  
**Practice Clusters:** 1.1.1; 1.2.2; 1.2.3;  
1.4.3; 2.2.1; 2.3.2; 2.5.1; 2.6.1; 2.7.1

**98. San Vicente Elementary School**

Ana Larson, Principal  
San Vicente Elementary School  
Northern Mariana Islands Public School System  
PO Box 1370 CK  
Saipan, MP 96950  
670/322-9812

**OTE Status:** Started 12/1/88;  
actively using OTE

**School Level:** Elementary  
**Number of Students:** Not listed  
**Area:** Rural  
**Student Population:**  
**Composition:** 100% Asian or Pacific Islander  
**Free/Reduced Lunch:** Not listed  
**Mobility:** Not listed

**Goal:** Student Academic Achievement:  
Reading  
**Start Date:** 1989  
**Goal Status:** Met short-term target  
**Practice Clusters:** Not listed

**99. Scenic Heights Elementary School**

Clarence Ladner, Principal  
Scenic Heights Elementary School  
Escambia School District  
3801 Cherry Laurel Lane  
Pensacola, FL 32504  
904/494-5635

**OTE Status:** Started 8/26/91;  
actively using OTE

**School Level:** Elementary  
**Number of Students:** 1102  
**Area:** Town/Suburban

**Student Population:**

**Composition:** 85% White; 10% Black;  
1% Hispanic; 4% Asian or Pacific  
Islander

**Free/Reduced Lunch:** 24%

**Mobility:** 10%

**Goal:** Student Academic Achievement: Math

**Start Date:** 1991

**Goal Status:** Progress not yet formally  
assessed

**Practice Clusters:** Not listed

**100. Seaside Heights Elementary School**

Kathy Samsel, Principal  
Seaside Heights Elementary School  
Seaside School District  
1720 Spruce Street  
Seaside, OR 97138-7549  
503/738-5161

**OTE Status:** Start date not listed;  
actively using OTE

**School Level:** Elementary

**Number of Students:** 510

**Area:** Town/Suburban

**Student Population:**

**Composition:** 97.5% White; 1% Black;  
1.5% Hispanic

**Free/Reduced Lunch:** 44%

**Mobility:** 21%

**Goal:** Not listed

**Start Date:** Not listed

**Goal Status:** Not listed

**Practice Clusters:** Not listed

**101. Semmes Elementary School**

Otha Leverette, Principal  
Semmes Elementary School  
Escambia School District  
1250 East Texar  
Pensacola, FL 32502  
904/444-2781

**OTE Status:** Started 8/26/91;  
actively using OTE

**School Level:** Elementary

**Number of Students:** 657

**Area:** Large City

**Student Population:**

**Composition:** 8% White; 92% Black

**Free/Reduced Lunch:** 80%

**Mobility:** 2%

**Goal:** Student Academic Achievement:  
Reading

**Start Date:** 1991

**Goal Status:** Made some progress toward  
target

**Practice Clusters:** 1.2.3; 1.3.2; 1.3.5;  
1.4.1; 1.5.1; 2.1.1; 2.2.3; 2.3.2; 2.4.2;  
2.5.1; 2.7.1

**102. Sherwood Elementary School**

Jim Pace, Principal  
Sherwood Elementary School  
Escambia School District  
501 Cherokee Trail  
Pensacola, FL 32506  
904/453-7420

**OTE Status:** Started 8/26/91;  
actively using OTE

**School Level:** Elementary

**Number of Students:** 680

**Area:** Large City

**Student Population:**

**Composition:** 77% White; 17% Black;  
2% Hispanic; 4% Asian or Pacific  
Islander

**Free/Reduced Lunch:** 54%

**Mobility:** 35%

## Elementary Schools

**Goal:** Not listed  
**Start Date:** Not listed  
**Goal Status:** Not listed  
**Practice Clusters:** Not listed

### 103. Skyline Elementary School

Skip Gillis, Principal  
Skyline Elementary School  
Tacoma School District No. 10  
2301 North Mildrid Street  
Tacoma, WA 98406  
206/596-2270

**OTE Status:** Started 9/1/90;  
actively using OTE

**School Level:** Elementary  
**Number of Students:** 537  
**Area:** Large City  
**Student Population:**  
**Composition:** 84.2% White; 10.4% Black;  
.8% Hispanic; 4% Asian or Pacific  
Islander; .6% American Indian/Alaska  
Native; .2% Russian  
**Free/Reduced Lunch:** 22%  
**Mobility:** 34.3%

**Goal:** Student Academic Achievement:  
Language  
**Start Date:** 1990  
**Goal Status:** Progress not yet formally  
assessed  
**Practice Clusters:** 1.3.2; 2.7.1

### 104. Sneads Elementary School

Virginia Blount, Principal  
Sneads Elementary School  
Jackson County School District  
PO Box 369  
Sneads, FL 32460  
904/482-9003

**OTE Status:** Started 1/31/92;  
actively using OTE

**School Level:** Elementary  
**Number of Students:** 460  
**Area:** Town/Suburban

**Student Population:**  
**Composition:** 85% White; 15% Black  
**Free/Reduced Lunch:** 25%  
**Mobility:** 20%

**Goal:** Not listed  
**Start Date:** Not listed  
**Goal Status:** Not listed  
**Practice Clusters:** Not listed

### 105. Solomon Elementary School

Stan Razak,  
Solomon Elementary School  
Solomon Unified School District 393  
PO Box 325  
Solomon, KS 67480  
913/655-2521

**OTE Status:** Start date not listed;  
actively using OTE

**School Level:** Elementary  
**Number of Students:** 230  
**Area:** Rural  
**Student Population:**  
**Composition:** 98% White; 1% Black;  
1% Hispanic  
**Free/Reduced Lunch:** 30%  
**Mobility:** 7%

**Goal:** Student Behavior: Discipline Referrals  
**Start Date:** 1991  
**Goal Status:** Made some progress toward  
target  
**Practice Clusters:** 2.2.3



**106. Spencer Bibbs Elementary School**

Malachi Williams, Principal  
 Spencer Bibbs Elementary School  
 Escambia School District  
 2005 North 6th Avenue  
 Pensacola, FL 32503  
 904/444-2427

**OTE Status:** Started 8/26/91;  
 actively using OTE

**School Level:** Elementary  
**Number of Students:** 528  
**Area:** Large City  
**Student Population:**  
**Composition:** 2.5% White; 96.5% Black;  
 .5% Hispanic; .5% Asian or Pacific  
 Islander  
**Free/Reduced Lunch:** 93%  
**Mobility:** 35%

**Goal:** Student Behavior: Discipline Referrals  
**Start Date:** 1991  
**Goal Status:** Progress not yet formally  
 assessed  
**Practice Clusters:** Not listed

**107. Stokes-Beard Elementary School**

Dixie Butler, Principal  
 Stokes-Beard Elementary School  
 Columbus Municipal School District  
 424 24th Street North  
 Columbus, MS 39701  
 601/328-1801

**OTE Status:** Started 10/10/91;  
 actively using OTE

**School Level:** Elementary  
**Number of Students:** 225  
**Area:** Small City  
**Student Population:**  
**Composition:** 5.5% White; 94% Black;  
 .5% Hispanic; .5% Asian or Pacific  
 Islander  
**Free/Reduced Lunch:** 97%  
**Mobility:** 65%

**Goal:** Not listed  
**Start Date:** Not listed  
**Goal Status:** Not listed  
**Practice Clusters:** Not listed

**108. Sunnyside Elementary School**

Mike Schwinden, Principal  
 Sunnyside Elementary School  
 Great Falls Public Schools  
 1800 19th Street South  
 Great Falls, MT 59405  
 406/791-2262

**OTE Status:** Started 2/15/88;  
 actively using OTE

**School Level:** Elementary  
**Number of Students:** 415  
**Area:** Large City  
**Student Population:**  
**Composition:** 98% White; .5% Black;  
 .5% Hispanic; .5% Asian or Pacific  
 Islander; .5% American Indian/Alaska  
 Native  
**Free/Reduced Lunch:** 34%  
**Mobility:** 7%

**Goal:** Student Academic Achievement:  
 Reading  
**Start Date:** 1988  
**Goal Status:** Met short-term target  
**Practice Clusters:** 1.3.2; 1.4.2; 2.2.2;  
 2.3.2; 2.4.1

**109. Suter Elementary School**

Debbie Rees, Principal  
 Suter Elementary School  
 Escambia School District  
 2900 East Strong Street  
 Pensacola, FL 32503  
 904/444-2785

**OTE Status:** Started 8/25/91;  
 actively using OTE

**School Level:** Elementary  
**Number of Students:** 375  
**Area:** Large City

## Elementary Schools

### Student Population:

**Composition:** 90% White; 5% Black;  
1% Hispanic; 3% Asian or Pacific  
Islander; 1% American Indian/Alaska  
Native

**Free/Reduced Lunch:** 18%

**Mobility:** 17%

**Goal:** Not listed

**Start Date:** Not listed

**Goal Status:** Not listed

**Practice Clusters:** Not listed

### 110. Swegle Elementary School

Michele Beal-Evans, Principal  
Swegle Elementary School  
Salem/Keizer School District No. 24J  
4485 Market Street NE  
Salem, OR 97301  
503/399-3191

**OTE Status:** Start date not listed;  
actively using OTE

**School Level:** Elementary

**Number of Students:** 625

**Area:** Large City

**Student Population:**

**Composition:** 95.9% White; .5% Black;  
2.1% Hispanic; .8% Asian or Pacific  
Islander; .6% American Indian/Alaska  
Native

**Free/Reduced Lunch:** 38%

**Mobility:** 18%

**Goal:** Student Behavior: Discipline Referrals

**Start Date:** 1990

**Goal Status:** Progress not yet formally  
assessed

**Practice Clusters:** 1.2.4; 1.4.3; 2.2.3; 2.6.1

### 111. Thatcher Elementary School

Greg Lowe, Principal  
Thatcher Elementary School  
148 Grace Joint District  
6007 East Thatcher Road  
Thatcher, ID 83283  
208/427-6346

**OTE Status:** Started 10/10/88;  
actively using OTE

**School Level:** Elementary

**Number of Students:** 144

**Area:** Rural

**Student Population:**

**Composition:** 97% White; 3% Hispanic

**Free/Reduced Lunch:** 53%

**Mobility:** 5%

**Goal:** Student Academic Achievement: Math

**Start Date:** 1988

**Goal Status:** Progress not yet formally  
assessed

**Practice Clusters:** 1.1.1; 1.2.2; 1.2.3;  
1.2.4; 1.3.1; 1.3.2; 1.3.3; 1.3.4; 1.3.5;  
1.4.1; 1.4.2; 1.4.3; 1.5.1; 1.6.1; 2.1.1;  
2.1.2; 2.2.2; 2.2.3; 2.2.4; 2.3.1; 2.3.2;  
2.3.3; 2.4.1; 2.5.1; 2.6.1; 2.7.1

### 112. Union Academy

Barbara Thornton, Chairperson  
Union Academy  
Columbus Municipal School District  
1425 10th Avenue North  
Columbus, MS 39701  
601/328-6188

**OTE Status:** Started 10/10/91;  
actively using OTE

**School Level:** Elementary

**Number of Students:** 306

**Area:** Small City

**Student Population:**

**Composition:** 100% Black

**Free/Reduced Lunch:** 88%

**Mobility:** 76%

**Goal:** Not listed  
**Start Date:** Not listed  
**Goal Status:** Not listed  
**Practice Clusters:** Not listed

**113. Vose Elementary School**

Ed Robinson, Principal  
 Vose Elementary School  
 Beaverton School District No. 48J  
 PO Box 200  
 Beaverton, OR 97075  
 503/591-4538

**OTE Status:** Started 9/1/85;  
 not actively using OTE

**School Level:** Elementary  
**Number of Students:** 681  
**Area:** Town/Suburban  
**Student Population:**  
**Composition:** 79.5% White; 2.8% Black;  
 8.5% Hispanic; 8.9% Asian or Pacific  
 Islander; .3% American Indian/Alaska  
 Native  
**Free/Reduced Lunch:** 49%  
**Mobility:** 45%

**114. Washington-Hoyt Elementary School**

Sandra Roszman, Principal  
 Washington-Hoyt Elementary School  
 Tacoma School District No. 10  
 3701 North 26th Street  
 Tacoma, WA 98407  
 206/752-8916

**OTE Status:** Started 9/1/90;  
 actively using OTE

**School Level:** Elementary  
**Number of Students:** 380  
**Area:** Large City

**Student Population:**  
**Composition:** 59% White; 10% Black;  
 2% Hispanic; 28% Asian or Pacific  
 Islander; 1% American Indian/Alaska  
 Native  
**Free/Reduced Lunch:** 54%  
**Mobility:** 32%

**Goal:** Student Academic Achievement:  
 Reading  
**Start Date:** 1991  
**Goal Status:** Progress not yet formally  
 assessed  
**Practice Clusters:** 1.3.1; 1.3.2; 1.4.2; 2.4.1

**115. Weis Elementary School**

Judith Ladner, Curriculum Coordinator  
 Weis Elementary School  
 Escambia School District  
 2701 North Q Street  
 Pensacola, FL 32505  
 904/444-2790

**OTE Status:** Started 8/26/91;  
 actively using OTE

**School Level:** Elementary  
**Number of Students:** 825  
**Area:** Large City  
**Student Population:**  
**Composition:** 24% White; 75% Black;  
 .2% Asian or Pacific Islander;  
 .8% American Indian/Alaska Native  
**Free/Reduced Lunch:** 88%  
**Mobility:** 25%

**Goal:** Not listed  
**Start Date:** Not listed  
**Goal Status:** Not listed  
**Practice Clusters:** Not listed

BEST COPY AVAILABLE

*Elementary Schools*

**116. West DeFuniak Elementary School**

David Drake, Principal  
West DeFuniak Elementary School  
Walton County School District  
1900 West Lincoln Avenue  
DeFuniak Springs, FL 32433  
904/892-2713

**OTE Status:** Started 9/5/91;  
actively using OTE

**School Level:** Elementary  
**Number of Students:** 616  
**Area:** Town/Suburban  
**Student Population:**  
**Composition:** 87% White; 12% Black;  
1% Asian or Pacific Islander  
**Free/Reduced Lunch:** 57%  
**Mobility:** Not listed

**Goal:** Student Behavior: Lunchroom Behavior  
**Start Date:** 1991  
**Goal Status:** Progress not yet formally  
assessed  
**Practice Clusters:** Not listed

**117. West End/Harris Elementary School**

Lavon Fluker-Reed, Principal  
West End/Harris Elementary School  
Meridian Public Schools  
3930 14th Street  
Meridian, MS 39301  
601/482-7171

**OTE Status:** Started 8/15/84;  
actively using OTE

**School Level:** Elementary  
**Number of Students:** 798  
**Area:** Small City  
**Student Population:**  
**Composition:** 5% White; 95% Black  
**Free/Reduced Lunch:** 85%  
**Mobility:** 5%

**Goal:** Student Attitude: At-Risk Students  
**Start Date:** Not listed  
**Goal Status:** Not listed  
**Practice Clusters:** 1.4.2; 1.4.3; 1.6.1;  
2.4.2; 2.6.1; 2.7.1

**118. West Grade School**

Diana Dominguez, Principal  
West Grade School  
Stanfield School District No. 61  
405 North Sherman; PO Box 219  
Stanfield, OR 97875  
503/449-3305

**OTE Status:** Started 8/19/91;  
actively using OTE

**School Level:** Elementary  
**Number of Students:** 270  
**Area:** Rural  
**Student Population:**  
**Composition:** 75% White; 25% Hispanic  
**Free/Reduced Lunch:** 55%  
**Mobility:** 5%

**Goal:** Student Academic Achievement: Math  
**Start Date:** 1991  
**Goal Status:** Progress not yet formally  
assessed  
**Practice Clusters:** 1.4.1; 1.6.1; 2.1.1; 2.2.2

**119. West Lowndes Elementary School**

Fred Young, Principal  
West Lowndes Elementary School  
Lowndes County School District  
1000 Gilmer Wilburn Road  
Columbus, MS 39701  
601/328-7772

**OTE Status:** Started 10/10/91;  
actively using OTE

**School Level:** Elementary  
**Number of Students:** 440  
**Area:** Rural

**Student Population:****Composition:** 2% White; 98% Black**Free/Reduced Lunch:** 97%**Mobility:** 7%**Goal:** Student Academic Achievement:  
Reading**Start Date:** 1990**Goal Status:** Progress not yet formally  
assessed**Practice Clusters:** 1.1.1; 1.2.1; 1.2.2;

1.2.3; 1.2.4; 1.3.1; 1.3.2; 1.3.3; 1.3.4;

1.3.5; 1.4.1; 1.4.2; 1.4.3; 1.5.1; 1.6.1;

2.1.1; 2.1.2; 2.2.1; 2.2.2; 2.2.3; 2.2.4;

2.3.1; 2.3.2; 2.3.3; 2.4.1; 2.4.2; 2.5.1;

2.6.1; 2.7.1

**120. West Pensacola Elementary  
School**Lynwood Kent, Principal  
West Pensacola Elementary School  
Escambia School District  
801 North 49th Avenue  
Pensacola, FL 32506  
904/455-0111**OTE Status:** Started 10/31/90;  
actively using OTE**School Level:** Elementary**Number of Students:** 587**Area:** Town/Suburban**Student Population:****Composition:** 76% White; 18% Black;.1% Hispanic; .1% Asian or Pacific  
Islander; 3.8% Other**Free/Reduced Lunch:** 66%**Mobility:** 10%**Goal:** Student Attitude: Reading Attitude**Start Date:** 1990**Goal Status:** Made some progress toward  
target**Practice Clusters:** 1.4.2; 2.4.2; 2.7.1**121. Westside Elementary School**Richard Shearer, Principal  
Westside Elementary School  
Hendry County School District  
205 West Arroyo Avenue  
Clewiston, FL 33440  
813/983-9109**OTE Status:** Started 11/19/91;  
actively using OTE**School Level:** Elementary**Number of Students:** 656**Area:** Town/Suburban**Student Population:****Composition:** 47% White; 30% Black;  
23% Hispanic**Free/Reduced Lunch:** 66%**Mobility:** 20%**Goal:** Not listed**Start Date:** Not listed**Goal Status:** Not listed**Practice Clusters:** Not listed**122. Whittier Elementary School**Charles Fuller, Principal  
Whittier Elementary School  
Great Falls Public Schools  
305 8th Street North  
Great Falls, MT 59403  
406/791-2306**OTE Status:** Started 9/1/88;  
actively using OTE**School Level:** Elementary**Number of Students:** 275**Area:** Large City**Student Population:****Composition:** 68% White; 1% Asian or  
Pacific Islander; 31% American Indian/  
Alaska Native**Free/Reduced Lunch:** 75%**Mobility:** 20%

**Goal:** Student Academic Achievement:  
Language Arts

**Start Date:** 1989

**Goal Status:** Met short-term target

**Practice Clusters:** 1.1.1; 1.2.1; 1.2.2;  
1.2.3; 1.2.4; 1.3.1; 1.3.2; 1.3.3; 1.3.4;  
1.3.5; 1.4.1; 1.4.2; 1.4.3; 1.5.1; 1.6.1;  
2.1.1; 2.1.2; 2.2.1; 2.2.2; 2.2.3; 2.2.4;  
2.3.1; 2.3.2; 2.3.3; 2.4.1; 2.4.2; 2.5.1;  
2.6.1; 2.7.1

### 123. Whittier School

George Parrett, Principal  
Whittier School  
Butte School District No. 1  
111 North Montana  
Butte, MT 59701  
406/723-9226

**OTE Status:** Started 9/15/89;  
actively using OTE

**School Level:** Elementary  
**Number of Students:** Not listed  
**Area:** Small City  
**Student Population:**  
**Composition:** 100% White  
**Free/Reduced Lunch:** 8%  
**Mobility:** .5%

**Goal:** Student Academic Achievement  
**Start Date:** 1991  
**Goal Status:** Met long-term standard  
**Practice Clusters:** 1.1.1; 1.2.1; 1.2.2;  
1.2.3; 1.2.4; 1.3.1; 1.3.2; 1.3.3; 1.3.4;  
1.3.5; 1.4.1; 1.4.2; 1.4.3; 1.5.1; 1.6.1;  
2.1.1; 2.1.2; 2.2.1; 2.2.2; 2.2.3; 2.2.4;  
2.3.1; 2.3.2; 2.3.3; 2.4.1; 2.4.2; 2.5.1;  
2.6.1; 2.7.1

### 124. Wilcox School

Ernest Dela Cruz, Principal  
Wilcox School  
Kauai District Public Schools  
4319 Hardy Street  
Lihue, HI 96766  
808/245-6351

**OTE Status:** Started 1/2/87;  
not actively using OTE

**School Level:** Elementary  
**Number of Students:** 1150  
**Area:** Town/Suburban  
**Student Population:**  
**Composition:** 8% White; 1% Black;  
1% Hispanic; 90% Asian or Pacific  
Islander  
**Free/Reduced Lunch:** 30%  
**Mobility:** 10%

### 125. Willow Elementary School

Vernon Yoshioka, Principal  
Willow Elementary School  
La Grande School District No. 1  
1305 Willow Street  
La Grande, OR 97850  
503/963-1950

**OTE Status:** Started 5/1/88;  
actively using OTE

**School Level:** Elementary  
**Number of Students:** 215  
**Area:** Town/Suburban  
**Student Population:**  
**Composition:** 98% White; 1% Black;  
1% Asian or Pacific Islander  
**Free/Reduced Lunch:** 47%  
**Mobility:** 10%

**Goal:** Student Academic Achievement:  
Reading

**Start Date:** 1988

**Goal Status:** Met long-term standard

**Practice Clusters:** 1.1.1; 1.2.1; 1.2.2;  
1.2.3; 1.2.4; 1.3.1; 1.3.2; 1.3.3; 1.3.4;  
1.3.5; 1.4.1; 1.4.2; 1.4.3; 1.5.1; 1.6.1;  
2.1.1; 2.1.2; 2.2.1; 2.2.2; 2.2.3; 2.2.4;  
2.3.1; 2.3.2; 2.3.3; 2.4.1; 2.4.2; 2.5.1;  
2.6.1; 2.7.1

## Middle/Junior High Schools

A total of 29 middle/junior high schools returned questionnaires and are listed in this section. Schools include those with students in grade 6 or 7 through grade 8 or 9. Not all schools provided all requested information. All but 5 responding schools have fewer than 1,000 students: 10 have 100-499 students and 12 have 500-1,000 students. In terms of location, 10 are in large cities (over 50,000 population), 7 are in small cities (25,000-50,000), 5 are in towns or suburban areas (2,500-25,000) and 7 are in rural areas (2,500 or fewer).

In selecting improvement goals, 12 schools cite goals related to student achievement, 7 cite student behavior goals, and 4 cite student attitude goals. Of those identifying goals, 1 met long-term standards in it's OTE cycle, 3 met short-term targets, 3 made some progress toward the target, and 14 have not yet formally assessed their progress.



**126. Bellview Middle School**

Eugene Pettis, Principal  
 Bellview Middle School  
 Escambia School District  
 6201 Mobile Highway  
 Pensacola, FL 32514

**OTE Status:** Started 8/26/91;  
 actively using OTE

**School Level:** Middle/Junior High

**Number of Students:** 1615

**Area:** Large City

**Student Population:**

**Composition:** 74% White; 21% Black;  
 .5% Hispanic; 4.3% Asian or Pacific  
 Islander; .2% American Indian/Alaska  
 Native

**Free/Reduced Lunch:** 50%

**Mobility:** 24%

**Goal:** Student Attitude: Attitude Toward School  
 Work

**Start Date:** 1991

**Goal Status:** Progress not yet formally  
 assessed

**Practice Clusters:** 1.4.3; 2.3.3; 2.4.2

**127. Brentwood Middle School**

Mary Helen Fryman, Principal  
 Brentwood Middle School  
 Escambia School District  
 201 East Hancock Lane  
 Pensacola, FL 32501  
 904/494-5640

**OTE Status:** Started 8/26/91;  
 actively using OTE

**School Level:** Middle/Junior High

**Number of Students:** 780

**Area:** Large City

**Student Population:**

**Composition:** 52% White; 45% Black;  
 3% Asian or Pacific Islander

**Free/Reduced Lunch:** 70%

**Mobility:** 10%

**Goal:** Student Behavior: Discipline Referrals

**Start Date:** 1991

**Goal Status:** Progress not yet formally  
 assessed

**Practice Clusters:** 1.2.2; 1.2.3; 1.2.4;  
 1.4.2; 1.4.3; 1.6.1; 2.2.3

**128. Broadway Middle School**

Jim White, Principal  
 Broadway Middle School  
 Seaside School District  
 1120 Broadway Street  
 Seaside, OR 97138-7899  
 503/738-6892

**OTE Status:** Start date not listed;  
 actively using OTE

**School Level:** Middle/Junior High

**Number of Students:** 270

**Area:** Town/Suburban

**Student Population:**

**Composition:** 99% White; 1% Other

**Free/Reduced Lunch:** 25%

**Mobility:** Not listed

**Goal:** Not listed

**Start Date:** Not listed

**Goal Status:** Not listed

**Practice Clusters:** Not listed

**129. Brownsville Middle School**

Thomas Frazier, Principal  
 Brownsville Middle School  
 Escambia School District  
 1800 North Kirk Street  
 Pensacola, FL 32505  
 904/432-1438

**OTE Status:** Started 10/31/90;  
 actively using OTE

**School Level:** Middle/Junior High

**Number of Students:** 880

**Area:** Large City

**Student Population:**

**Composition:** 48% White; 43% Black;  
9% Asian or Pacific Islander  
**Free/Reduced Lunch:** 80%  
**Mobility:** 25%

**Goal:** Student Academic Achievement:  
Improve CAT Scores

**Start Date:** 1990

**Goal Status:** Met long-term standard

**Practice Clusters:** 1.3.2; 1.3.3; 2.4.2

**130. Castlerock Middle School**

Peggy Parker, Principal  
Castlerock Middle School  
Billings Public Schools  
1441 Governors Blvd.  
Billings, MT 59105  
406/255-3710

**OTE Status:** Started 10/1/91;  
actively using OTE

**School Level:** Middle/Junior High

**Number of Students:** 680

**Area:** Large City

**Student Population:**

**Composition:** 93% White; 1% Black;  
1% Hispanic; 5% American Indian/Alaska  
Native

**Free/Reduced Lunch:** 18%

**Mobility:** 27.2%

**Goal:** Student Attitude: Respect

**Start Date:** 1991

**Goal Status:** Progress not yet formally  
assessed

**Practice Clusters:** 1.2.4; 1.4.3; 2.2.3;  
2.2.4; 2.4.2; 2.7.1

**131. Centennial Middle School**

Clark Brody, Principal  
Centennial Middle School  
Centennial School District No. 28J  
17650 SE Brooklyn  
Portland, OR 97236  
503/251-2206

**OTE Status:** Started 10/15/84;  
not actively using OTE

**School Level:** Middle/Junior High

**Number of Students:** 870

**Area:** Town/Suburban

**Student Population:**

**Composition:** 99.7% White; .1% Black;  
.1% Hispanic; .1% Asian or Pacific  
Islander

**Free/Reduced Lunch:** 23%

**Mobility:** 33%

**132. Chapman Middle School**

John Sanborn, Principal  
Chapman Middle School  
Chapman Unified School District 473  
622 North Marshal  
Chapman, KS 67431  
913/922-6555

**OTE Status:** Started 9/6/91;  
actively using OTE

**School Level:** Middle/Junior High

**Number of Students:** 205

**Area:** Rural

**Student Population:**

**Composition:** 97% White; 1% Black;  
1% Hispanic; 1% Asian or Pacific  
Islander

**Free/Reduced Lunch:** 35%

**Mobility:** 15%

**Goal:** Student Behavior: Responsible Learner

**Start Date:** 1991

**Goal Status:** Made some progress toward  
target

**Practice Clusters:** 1.2.4; 1.4.2

**133. Chief Joseph Middle School**

Anne K. Olson, Principal  
 Chief Joseph Middle School  
 Bozeman School District No. 7  
 309 North 11th Avenue  
 Bozeman, MT 59715  
 406/585-1610

**OTE Status:** Started 9/1/86;  
 actively using OTE

**School Level:** Middle/Junior High

**Number of Students:** 1030

**Area:** Small City

**Student Population:**

**Composition:** 100% White

**Free/Reduced Lunch:** 15%

**Mobility:** 10%

**Goal:** Student Attitude: Advisory Program

**Start Date:** Not listed

**Goal Status:** Progress not yet formally  
 assessed

**Practice Clusters:** 1.1.1; 1.2.2; 1.6.1;  
 2.2.2; 2.2.3; 2.3.1; 2.3.2; 2.3.3; 2.4.1

**134. Clewiston Middle School**

John Sullivan, Principal  
 Clewiston Middle School  
 Hendry County School District  
 601 West Osceola  
 Clewiston, FL 33440  
 813/983-9134

**OTE Status:** Started 11/19/91;  
 actively using OTE

**School Level:** Middle/Junior High

**Number of Students:** 796

**Area:** Rural

**Student Population:**

**Composition:** 43.5% White; 33.4% Black;

21% Hispanic; .1% Asian or Pacific  
 Islander; .1% American Indian/Alaska  
 Native

**Free/Reduced Lunch:** 50%

**Mobility:** 15%

**Goal:** Student Academic Achievement:  
 Reading

**Start Date:** Not listed

**Goal Status:** Not listed

**Practice Clusters:** Not listed

**135. Corwin Middle School**

Fred Ingo, Principal  
 Corwin Middle School  
 Pueblo School District 60  
 1500 Lakeview Avenue  
 Pueblo, CO 81004  
 719/564-4265

**OTE Status:** Started 3/1/88;  
 not actively using OTE

**School Level:** Middle/Junior High

**Number of Students:** 610

**Area:** Large City

**Student Population:**

**Composition:** Not listed

**Free/Reduced Lunch:** Not listed

**Mobility:** Not listed

**136. Ferry Pass Middle School**

Bill Fillingin, Principal  
 Ferry Pass Middle School  
 Escambia School District  
 2355 Yancey Avenue  
 Pensacola, FL 32514  
 904/494-5650

**OTE Status:** Started 8/26/91;  
 actively using OTE

**School Level:** Middle/Junior High

**Number of Students:** 1144

**Area:** Large City

**Student Population:**

**Composition:** 72% White; 28% Black

**Free/Reduced Lunch:** 36%

**Mobility:** 9%

*Middle/Junior High Schools*

**Goal:** Student Behavior: Discipline Referrals  
**Start Date:** 1991  
**Goal Status:** Made some progress toward target  
**Practice Clusters:** 1.2.4; 1.4.3; 2.2.3

**137. Gault Middle School**

Michael Williams, Chairperson  
Gault Middle School  
Tacoma School District No. 10  
1115 East Division Lane  
Tacoma, WA 98404  
206/596-1405

**OTE Status:** Started 9/1/90;  
actively using OTE

**School Level:** Middle/Junior High  
**Number of Students:** 440  
**Area:** Large City  
**Student Population:**  
**Composition:** 48% White; 30% Black;  
4% Hispanic; 13% Asian or Pacific  
Islander; 5% American Indian/Alaska  
Native  
**Free/Reduced Lunch:** 65%  
**Mobility:** 30%

**Goal:** Student Academic Achievement: All Areas  
**Start Date:** 1990  
**Goal Status:** Met short-term target  
**Practice Clusters:** 1.1.1; 1.2.1; 1.2.2;  
1.2.3; 1.2.4; 1.3.1; 1.3.2; 1.3.3; 1.3.4;  
1.3.5; 1.4.1; 1.4.2; 1.4.3; 1.5.1; 1.6.1;  
2.1.1; 2.1.2; 2.2.1; 2.2.2; 2.2.3; 2.2.4;  
2.3.1; 2.3.2; 2.3.3; 2.4.1; 2.4.2; 2.5.1;  
2.6.1; 2.7.1

**138. Harding Gibbs Middle School**

Wayne Simmons, Principal  
Harding Gibbs Middle School  
59 Firth District  
101 North Park, Box 247  
Firth, ID 83236  
208/346-6811

**OTE Status:** Started 11/17/91;  
actively using OTE

**School Level:** Middle/Junior High  
**Number of Students:** 270  
**Area:** Rural  
**Student Population:**  
**Composition:** 90% White; 9% Hispanic;  
1% American Indian/Alaska Native  
**Free/Reduced Lunch:** 20%  
**Mobility:** 5%

**Goal:** Not listed  
**Start Date:** Not listed  
**Goal Status:** Not listed  
**Practice Clusters:** Not listed

**139. Hunt Junior High School**

Johnny Johnson, Principal  
Hunt Junior High School  
Columbus Municipal School District  
924 20th Street North  
Columbus, MS 39701  
601/327-2413

**OTE Status:** Started 10/10/91;  
actively using OTE

**School Level:** Middle/Junior High  
**Number of Students:** 494  
**Area:** Small City  
**Student Population:**  
**Composition:** 30% White; 70% Black  
**Free/Reduced Lunch:** 56%  
**Mobility:** 22%

**Goal:** Not listed  
**Start Date:** Not listed  
**Goal Status:** Not listed  
**Practice Clusters:** Not listed

**140. Hunt Middle School**

Bob Lang, Principal  
 Hunt Middle School  
 Tacoma School District No. 10  
 6501 South 10th Street  
 Tacoma, WA 98465  
 206/596-2335

**OTE Status:** Started 9/1/90;  
 actively using OTE

**School Level:** Middle/Junior High

**Number of Students:** 820

**Area:** Large City

**Student Population:**

**Composition:** 75% White; 17% Black;  
 2% Hispanic; 4% Asian or Pacific  
 Islander; 1% American Indian/Alaska  
 Native

**Free/Reduced Lunch:** Not listed

**Mobility:** 10%

**Goal:** Student Academic Achievement: GPA in  
 All Areas

**Start Date:** 1990

**Goal Status:** Made some progress toward  
 target

**Practice Clusters:** Not listed

**141. J. W. Poynter Junior High School**

Ken Wellman, Principal  
 J. W. Poynter Junior High School  
 Hillsboro Union High School District No. 3J  
 645 NE Lincoln Street  
 Hillsboro, OR 97124  
 503/640-4604

**OTE Status:** Started 3/4/85;  
 actively using OTE

**School Level:** Middle/Junior High

**Number of Students:** Not listed

**Area:** Small City

**Student Population:**

**Composition:** 80% White; 3% Black;  
 17% Hispanic

**Free/Reduced Lunch:** Not listed

**Mobility:** Not listed

**Goal:** Student Attitude: School as Place to  
 Learn

**Start Date:** 1990

**Goal Status:** Progress not yet formally  
 assessed

**Practice Clusters:** Not listed

**142. Joe Cook Junior High School**

Linda Guin, Principal  
 Joe Cook Junior High School  
 Columbus Municipal School District  
 2217 7th Street North  
 Columbus, MS 39701  
 601/329-8282

**OTE Status:** Started 10/10/91;  
 actively using OTE

**School Level:** Middle/Junior High

**Number of Students:** 495

**Area:** Small City

**Student Population:**

**Composition:** 37% White; 63% Black

**Free/Reduced Lunch:** 78%

**Mobility:** 23%

**Goal:** Not listed

**Start Date:** Not listed

**Goal Status:** Not listed

**Practice Clusters:** Not listed

**143. Kate Griffin Junior High School**

Martha Walker, Principal  
 Kate Griffin Junior High School  
 Meridian Public Schools  
 2814 Davis Street  
 Meridian, MS 39301  
 601/483-5221

**OTE Status:** Started 8/15/84;  
 actively using OTE

**School Level:** Middle/Junior High

**Number of Students:** Not listed

**Area:** Small City

**Student Population:**

**Composition:** 29% White; 70% Black;  
1% Asian or Pacific Islander

**Free/Reduced Lunch:** 71%

**Mobility:** Not listed

**Goal A: Student Academic Achievement:**  
Improving SAT Scores

**Start Date:** 1991

**Goal Status:** Progress not yet formally  
assessed

**Practice Clusters:** 1.1.1; 1.2.2; 1.3.1;  
1.3.2; 1.3.4; 1.3.5; 1.4.1; 1.4.2; 1.4.3;  
1.5.1; 1.6.1; 2.1.1; 2.1.2; 2.2.2; 2.2.3;  
2.2.4; 2.3.1; 2.3.2; 2.3.3; 2.4.1; 2.4.2;  
2.5.1; 2.6.1; 2.7.1

**Goal B: Student Behavior: Attendance**

**Start Date:** 1991

**Goal Status:** Progress not yet formally  
assessed

**Practice Clusters:** 1.1.1; 1.2.2; 1.3.1;  
1.3.2; 1.3.4; 1.3.5; 1.4.1; 1.4.2; 1.4.3;  
1.5.1; 1.6.1; 2.1.1; 2.1.2; 2.2.2; 2.2.3;  
2.2.4; 2.3.1; 2.3.2; 2.3.3; 2.4.1; 2.4.2;  
2.5.1; 2.6.1; 2.7.1

**Goal C: Student Behavior: Discipline Referrals**

**Start Date:** 1991

**Goal Status:** Progress not yet formally  
assessed

**Practice Clusters:** 1.1.1; 1.2.2; 1.3.1;  
1.3.2; 1.3.4; 1.3.5; 1.4.1; 1.4.2; 1.4.3;  
1.5.1; 1.6.1; 2.1.1; 2.1.2; 2.2.2; 2.2.3;  
2.2.4; 2.3.1; 2.3.2; 2.3.3; 2.4.1; 2.4.2;  
2.5.1; 2.6.1; 2.7.1

**144. Kingston Junior High School**

Steve Richards, Principal  
Kingston Junior High School  
North Kitsap School District No. 400  
9000 NE West Kingston Road  
Kingston, WA 98346  
206/297-7070

**OTE Status:** Started 9/1/91;  
actively using OTE

**School Level:** Middle/Junior High

**Number of Students:** 540

**Area:** Rural

**Student Population:**

**Composition:** 87% White; 1% Black;  
2% Hispanic; 2% Asian or Pacific  
Islander; 8% American Indian/Alaska  
Native

**Free/Reduced Lunch:** 24%

**Mobility:** 10%

**Goal:** Student Academic Achievement:  
Relevant Curriculum

**Start Date:** 1991

**Goal Status:** Progress not yet formally  
assessed

**Practice Clusters:** 1.1.1; 1.2.1; 2.3.2;  
2.4.2; 2.5.1; 2.6.1; 2.7.1

**145. LaBelle Middle School**

James Allen, Jr., Principal  
LaBelle Middle School  
Hendry County School District  
PO Box 1920  
LaBelle, FL 33935  
813/675-0213

**OTE Status:** Started 11/19/91;  
actively using OTE

**School Level:** Middle/Junior High

**Number of Students:** 630

**Area:** Town/Suburban

**Student Population:**

**Composition:** 58.8% White; 10.7% Black;  
30% Hispanic; .2% Asian or Pacific  
Islander; .3% American Indian/Alaska  
Native

**Free/Reduced Lunch:** 54%

**Mobility:** 1%

**Goal:** Not listed

**Start Date:** Not listed

**Goal Status:** Not listed

**Practice Clusters:** Not listed

**146. Mead Junior High School**

Keith Carmichael, Principal  
Mead Junior High School  
St. Vrain Valley Public Schools  
2738 Weld County Road 34  
Mead, CO 80542  
303/535-4447

**OTE Status:** Started 9/1/85;  
actively using OTE

**School Level:** Middle/Junior High

**Number of Students:** 261

**Area:** Small City

**Student Population:**

**Composition:** 90% White; 8% Hispanic;  
1% Asian or Pacific Islander

**Free/Reduced Lunch:** 19.9%

**Mobility:** 32.4%

**Goal:** Student Academic Achievement:  
Reading

**Start Date:** 1991

**Goal Status:** Progress not yet formally  
assessed

**Practice Clusters:** 1.1.1; 1.3.2; 1.3.3;  
1.3.4; 1.4.1; 1.4.2

**147. Molalla Grade School**

Julie Clark, Principal  
Molalla Grade School (Grades 7, 8)  
Molalla School District 35  
PO Box 225  
Molalla, OR 97038  
503/829-6133

**OTE Status:** Started 9/1/91;  
actively using OTE

**School Level:** Middle/Junior High

**Number of Students:** 858.

**Area:** Town/Suburban

**Student Population:**

**Composition:** 95.1% White; .5% Black;  
4% Hispanic; .1% Asian or Pacific  
Islander; .4% American Indian/Alaska  
Native

**Free/Reduced Lunch:** 29%

**Mobility:** 41%

**Goal:** Student Behavior: Discipline Referrals

**Start Date:** 1991

**Goal Status:** Progress not yet formally  
assessed

**Practice Clusters:** 1.2.4; 1.4.2; 1.4.3;  
1.6.1; 2.2.2; 2.2.3; 2.4.2; 2.6.1; 2.7.1

**148. Piti Middle School**

Rosita Osborn, Principal  
Piti Middle School  
Guam Department of Education  
PO Box ED  
Agana, GU 96910  
671/472-8901

**OTE Status:** Started 9/1/88;  
actively using OTE

**School Level:** Middle/Junior High

**Number of Students:** 792

**Area:** Small City

**Student Population:**

**Composition:** 5% White; 3% Black;  
5% Hispanic; 82% Asian or Pacific  
Islander; 5% Other

**Free/Reduced Lunch:** 15%

**Mobility:** Not listed

*Middle/Junior High Schools*

**Goal:** Student Academic Achievement:  
Reading  
**Start Date:** 1991  
**Goal Status:** Met short-term target  
**Practice Clusters:** 1.4.2; 1.6.1; 2.1.1;  
2.2.4; 2.3.1; 2.3.2; 2.4.2; 2.7.1

**149. Scio Middle School**

Becky Hixson,  
Scio Middle School  
Scio School District No. 95  
38875 NW First Avenue  
Scio, OR 97374  
503/394-3276

**OTE Status:** Started 10/1/87;  
actively using OTE

**School Level:** Middle/Junior High

**Number of Students:** 140

**Area:** Rural

**Student Population:**

**Composition:** 99% White; .5% Black;  
.5% Hispanic

**Free/Reduced Lunch:** 40%

**Mobility:** 40%

**Goal:** Student Academic Achievement:  
Communication  
**Start Date:** 1991  
**Goal Status:** Progress not yet formally  
assessed  
**Practice Clusters:** 1.5.1; 2.2.3; 2.7.1

**150. Waldport Middle School**

Beau Horn, Principal  
Waldport Middle School  
Lincoln County School District  
PO Box 839  
Waldport, OR 97394  
503/563-3235

**OTE Status:** Start date not listed;  
actively using OTE

**School Level:** Middle/Junior High

**Number of Students:** 240

**Area:** Rural

**Student Population:**

**Composition:** 98% White; 1% Asian or  
Pacific Islander; 1% American Indian/  
Alaska Native

**Free/Reduced Lunch:** 30%

**Mobility:** 10%

**Goal:** Student Behavior: Discipline Referrals

**Start Date:** 1991

**Goal Status:** Not listed

**Practice Clusters:** 1.2.3; 1.2.4; 1.4.2;  
1.4.3; 2.2.3; 2.4.2; 2.7.1

**151. Walton Middle School**

Kenneth Hulion, Principal  
Walton Middle School  
Walton County School District  
105 Georgia Street  
DeFuniak Springs, FL 32433  
904/892-3227

**OTE Status:** Started 9/5/91;  
actively using OTE

**School Level:** Middle/Junior High

**Number of Students:** 710

**Area:** Town/Suburban

**Student Population:**

**Composition:** 77% White; 21% Black;  
1% Hispanic; 1% Asian or Pacific  
Islander; 3% American Indian/Alaska  
Native

**Free/Reduced Lunch:** 56%

**Mobility:** 28%

**Goal:** Not listed

**Start Date:** Not listed

**Goal Status:** Not listed

**Practice Clusters:** Not listed



**152. Warrington Middle School**

Richard Messmer, Junior Principal  
Warrington Middle School  
Escambia School District  
450 South Old Corry Road  
Pensacola, FL 32507  
904/453-7440

**OTE Status:** Started 10/1/91;  
actively using OTE

**School Level:** Middle/Junior High  
**Number of Students:** 1220  
**Area:** Large City  
**Student Population:**

**Composition:** 64% White; 35% Black;  
3% Hispanic; 3% Asian or Pacific  
Islander

**Free/Reduced Lunch:** 62%  
**Mobility:** Not listed

**Goal:** Student Academic Achievement: CAT  
Scores  
**Start Date:** 1991  
**Goal Status:** Met short-term target  
**Practice Clusters:** 1.4.3; 2.2.3; 2.7.1

**153. West Lowndes Middle School**

Milton Fields, Principal  
West Lowndes Middle School  
Lowndes County School District  
1380 Motley Road  
Columbus, MS 39701  
601/327-3635

**OTE Status:** Started 10/10/91;  
actively using OTE

**School Level:** Middle/Junior High  
**Number of Students:** 200  
**Area:** Rural  
**Student Population:**

**Composition:** 6% White; 94% Black  
**Free/Reduced Lunch:** 93%  
**Mobility:** 12%

**Goal:** Student Academic Achievement:  
Improving SAT Scores  
**Start Date:** 1991  
**Goal Status:** Progress not yet formally  
assessed  
**Practice Clusters:** 1.1.1; 1.2.4; 1.3.5;  
2.1.2; 2.2.3

**154. Workman Middle School**

Jan Williamson, Principal  
Workman Middle School  
Escambia School District  
6299 Lanier Drive  
Pensacola, FL 32503  
904/494-5665

**OTE Status:** Started 8/26/91;  
actively using OTE

**School Level:** Middle/Junior High  
**Number of Students:** 1040  
**Area:** Large City  
**Student Population:**

**Composition:** 59% White; 39% Black;  
2% Asian or Pacific Islander  
**Free/Reduced Lunch:** 31%  
**Mobility:** 20%

**Goal:** Student Academic Achievement:  
Reading  
**Start Date:** 1991  
**Goal Status:** Progress not yet formally  
assessed  
**Practice Clusters:** 1.1.1; 1.3.2; 1.4.1; 1.5.1

## High Schools

A total of 33 high schools returned questionnaires and are listed in this section. Schools include those with students in grade 8 or 9 through grade 12. Not all schools provided all requested information. All but 1 of the schools have more than 100 students: 11 have 100-499 students, 9 have 500-1,000 students, and 10 have more than 1,000 students. In terms of location, 7 are in large cities (over 50,000 population), 6 are in small cities (25,000-50,000), 12 are in towns or suburban areas (2,500-25,000) and 8 are in rural areas (2,500 or fewer).

In selecting improvement goals, 8 schools cite goals related to student achievement, 5 cite student behavior goals, and 2 cite student attitude goals. Of those identifying goals, 4 met short-term targets in their OTE cycle, 5 made some progress toward the target, 1 made little or no progress, and 5 have not yet formally assessed their progress.

**155. Bandon High School**

Rick Howell, Principal  
 Bandon High School  
 Bandon School District No. 54  
 550 9th Street SW  
 Bandon, OR 97411  
 503/347-4413

**OTE Status:** Start date not listed;  
 not actively using OTE

**School Level:** High

**Number of Students:** 249

**Area:** Rural

**Student Population:**

**Composition:** 93% White; 1% Black;  
 3% Hispanic; 2% Asian or Pacific  
 Islander; 1% American Indian/Alaska  
 Native

**Free/Reduced Lunch:** 21%

**Mobility:** 25%

**156. Caledonia High School**

Orman Bridges, Principal  
 Caledonia High School  
 Lowndes County School District  
 111 Confederate Drive  
 Caledonia, MS 39740  
 601/356-4988

**OTE Status:** Started 10/10/91;  
 actively using OTE

**School Level:** High

**Number of Students:** 370

**Area:** Rural

**Student Population:**

**Composition:** 68.7% White; 29.9% Black;  
 1.4% Asian or Pacific Islander

**Free/Reduced Lunch:** 36%

**Mobility:** 17%

**Goal:** Student Academic Achievement: Writing

**Start Date:** 1991

**Goal Status:** Made some progress toward  
 target

**Practice Clusters:** Not listed

**157. Canby Union High School**

Sharon Schneider, Counselor  
 Canby Union High School  
 Canby Union High School District  
 721 SW 4th Avenue  
 Canby, OR 97013  
 503/266-5811

**OTE Status:** Started 10/1/86;  
 actively using OTE

**School Level:** High

**Number of Students:** 1286

**Area:** Town/Suburban

**Student Population:**

**Composition:** 97% White; 1% Black;  
 2% Hispanic

**Free/Reduced Lunch:** 5%

**Mobility:** 11%

**Goal:** Not listed

**Start Date:** Not listed

**Goal Status:** Not listed

**Practice Clusters:** Not listed

**158. Capitol High School**

Ron Arnold, Principal  
 Capitol High School  
 Independent District of Boise  
 8055 Goddard  
 Boise, ID 83704  
 208/322-3875

**OTE Status:** Start date not listed;  
 actively using OTE

**School Level:** High

**Number of Students:** 1325

**Area:** Large City

**Student Population:**

**Composition:** 97% White; .5% Black;  
 1% Hispanic; 1% Asian or Pacific  
 Islander; .5% American Indian/Alaska  
 Native

**Free/Reduced Lunch:** 9.6%

**Mobility:** 5%

## High Schools

**Goal:** Student Academic Achievement: Writing

**Start Date:** 1991

**Goal Status:** Met short-term target

**Practice Clusters:** 1.1.1; 1.2.2; 1.2.3;

1.2.4; 1.3.2; 1.3.4; 1.4.1; 1.4.3; 2.1.2;

2.2.1; 2.2.2; 2.2.3; 2.2.4; 2.3.1; 2.4.1;

2.6.1

### 159. Century High School

Richard Erwin, Principal

Century High School

Escambia School District

700 East Hecker Road

Century, FL 32535

904/256-3501

**OTE Status:** Started 8/26/91;

actively using OTE

**School Level:** High

**Number of Students:** 242

**Area:** Rural

**Student Population:**

**Composition:** 63% White; 37% Black;

.5% Hispanic

**Free/Reduced Lunch:** 55%

**Mobility:** 5%

**Goal:** Student Behavior: Attendance

**Start Date:** 1990

**Goal Status:** Made some progress toward target

**Practice Clusters:** 1.1.1; 1.2.3; 1.3.4;

1.3.5; 1.4.1; 1.4.2; 1.5.1; 1.6.1; 2.1.1;

2.1.2; 2.2.3; 2.3.1; 2.3.3; 2.4.1; 2.4.2;

2.5.1; 2.6.1; 2.7.1

### 160. Chapman High School

Dick Hall, Principal

Chapman High School

Chapman Unified School District 473

400 West 4th Street

Chapman, KS 67431

913/922-6561

**OTE Status:** Started 9/6/91;

actively using OTE

**School Level:** High

**Number of Students:** 380

**Area:** Rural

**Student Population:**

**Composition:** 97% White; 1% Black;

1% Hispanic; 1% Asian or Pacific

Islander

**Free/Reduced Lunch:** 34%

**Mobility:** 25%

**Goal:** Student Attitude: Self as Learner

**Start Date:** 1991

**Goal Status:** Progress not yet formally assessed

**Practice Clusters:** Not listed

### 161. Clewiston High School

Kurt Squitier, Principal

Clewiston High School

Hendry County School District

1501 South Francisco Street

Clewiston, FL 33440

813/983-6165

**OTE Status:** Started 11/19/91;

actively using OTE

**School Level:** High

**Number of Students:** 840

**Area:** Town/Suburban

**Student Population:**

**Composition:** 43% White; 32% Black;

24% Hispanic; .5% Asian or Pacific

Islander; .5% American Indian/Alaska

Native

**Free/Reduced Lunch:** 32%

**Mobility:** 10%

**Goal:** Student Behavior: Attendance  
**Start Date:** 1991  
**Goal Status:** Progress not yet formally assessed  
**Practice Clusters:** Not listed

### 162. Columbus East High School

T. Scott Murrah, Principal  
 Columbus East High School  
 Columbus Municipal School District  
 820 Browder Street  
 Columbus, MS 39702  
 601/328-2082

**OTE Status:** Started 10/10/91;  
 actively using OTE

**School Level:** High  
**Number of Students:** 800  
**Area:** Small City  
**Student Population:**  
**Composition:** 30% White; 70% Black  
**Free/Reduced Lunch:** 60%  
**Mobility:** 21%

**Goal:** Student Academic Achievement: Critical Thinking  
**Start Date:** 1991  
**Goal Status:** Made some progress toward target  
**Practice Clusters:** 1.1.1; 1.2.2; 1.2.3;  
 1.2.4; 1.3.2; 1.3.4; 1.3.5; 1.4.1; 1.4.2;  
 1.4.3; 1.5.1; 2.1.1; 2.2.2; 2.2.3; 2.2.4;  
 2.3.1; 2.3.2; 2.4.1; 2.4.2

### 163. Columbus West High School

Howell Mims, Principal  
 Columbus West High School  
 Columbus Municipal School District  
 1815 Military Road  
 Columbus, MS 39701  
 601/328-3334

**OTE Status:** Started 10/10/91;  
 actively using OTE

**School Level:** High  
**Number of Students:** 850  
**Area:** Small City  
**Student Population:**  
**Composition:** 42% White; 58% Black  
**Free/Reduced Lunch:** 30%  
**Mobility:** 10%

**Goal:** Not listed  
**Start Date:** 1991  
**Goal Status:** Not listed  
**Practice Clusters:** 1.1.1; 2.2.1; 2.2.2;  
 2.2.4; 2.3.2; 2.4.1; 2.6.1

### 164. Escambia High School

Larry Huntley, Principal  
 Escambia High School  
 Escambia School District  
 1310 North 65th Avenue  
 Pensacola, FL 32529  
 904/453-3221 x106

**OTE Status:** Started 8/26/91;  
 actively using OTE

**School Level:** High  
**Number of Students:** 1800  
**Area:** Large City  
**Student Population:**  
**Composition:** 65% White; 26% Black;  
 1% Hispanic; 8% Asian or Pacific  
 Islander  
**Free/Reduced Lunch:** 25%  
**Mobility:** 10%

## High Schools

**Goal:** Student Behavior: Discipline Referrals

**Start Date:** 1991

**Goal Status:** Made some progress toward target

**Practice Clusters:** 1.1.1; 1.4.1; 1.4.3;  
1.6.1; 2.1.1; 2.2.2; 2.2.3; 2.2.4; 2.3.1;  
2.3.2; 2.6.1; 2.7.1

### 165. Foster High School

Horst Momber, Principal  
Foster High School  
South Central School District  
4242 South 144th Street  
Seattle, WA 98168  
206/243-1771

**OTE Status:** Started 8/1/84;  
not actively using OTE

**School Level:** High

**Number of Students:** 460

**Area:** Large City

**Student Population:**

**Composition:** 71% White; 10.5% Black;  
4% Hispanic; 10.5% Asian or Pacific  
Islander; 3% American Indian/Alaska  
Native; 1% Other

**Free/Reduced Lunch:** 16.8%

**Mobility:** 30%

### 166. Glencoe High School

Joe Rodriguez, Principal  
Glencoe High School  
Hillsboro Union High School District No. 3J  
2700 NW Glencoe Road  
Hillsboro, OR 97124  
503/640-8971

**OTE Status:** Started 3/1/85;  
actively using OTE

**School Level:** High

**Number of Students:** 1436

**Area:** Small City

**Student Population:**

**Composition:** 85.3% White; .6% Black;  
11.1% Hispanic; 2.7% Asian or Pacific  
Islander; .3% American Indian/Alaska  
Native

**Free/Reduced Lunch:** 15.7%

**Mobility:** Not listed

**Goal:** Student Academic Achievement: Critical Thinking

**Start Date:** 1984

**Goal Status:** Met short-term target

**Practice Clusters:** 1.4.1; 2.1.1; 2.3.1;  
2.3.2; 2.4.1; 2.7.1

### 167. Hermiston High School

Rick Barber, Principal  
Hermiston High School  
Hermiston School District No. 8  
600 South 1st Street  
Hermiston, OR 97838  
503/567-2241

**OTE Status:** Started 8/1/88;  
not actively using OTE

**School Level:** High

**Number of Students:** 1060

**Area:** Town/Suburban

**Student Population:**

**Composition:** 83% White; 1% Black;  
14% Hispanic; 1% Asian or Pacific  
Islander; 1% American Indian/Alaska  
Native

**Free/Reduced Lunch:** Not listed

**Mobility:** 21%

**168. Holmes County High School**

James Lee, Principal  
 Holmes County High School  
 Holmes County School District  
 401 McLaughlin Avenue  
 Bonifay, FL 32425  
 904/547-2754

**OTE Status:** Start date not listed;  
 actively using OTE

**School Level:** High  
**Number of Students:** 470  
**Area:** Town/Suburban  
**Student Population:**  
**Composition:** 98% White; 2% Black  
**Free/Reduced Lunch:** 50%  
**Mobility:** 10%

**Goal:** Not listed  
**Start Date:** Not listed  
**Goal Status:** Not listed  
**Practice Clusters:** Not listed

**169. Kamloops Senior Secondary School**

Keith Meakins, Vice Principal  
 Kamloops Senior Secondary School  
 Kamloops School District No. 24  
 821 Monroe Street  
 Kamloops, BC Canada V2C 3E9  
 604/374-1405

**OTE Status:** Start date not listed;  
 actively using OTE

**School Level:** High  
**Number of Students:** Not listed  
**Area:** Large City  
**Student Population:**  
**Composition:** 90% White; 2% Asian or  
 Pacific Islander; 8% American Indian/  
 Alaska Native  
**Free/Reduced Lunch:** Not listed  
**Mobility:** 15%

**Goal:** Student Attitude: Respect Teachers  
**Start Date:** 1990  
**Goal Status:** Little or no progress  
**Practice Clusters:** 1.2.4; 1.4.1; 1.4.3;  
 1.6.1; 2.2.3; 2.2.4; 2.4.1; 2.6.1

**170. La Grande High School**

Roland Bevell, Principal  
 La Grande High School  
 La Grande School District No. 1  
 708 K Avenue  
 La Grande, OR 97850  
 503/963-1969

**OTE Status:** Started 9/1/89;  
 not actively using OTE

**School Level:** High  
**Number of Students:** 940  
**Area:** Town/Suburban  
**Student Population:**  
**Composition:** 99% White; .3% Black;  
 .3% Asian or Pacific Islander;  
 .3% American Indian/Alaska Native  
**Free/Reduced Lunch:** 13%  
**Mobility:** 6%

**171. LaBelle High School**

R. Scott Cooper, Principal  
 LaBelle High School  
 Hendry County School District  
 4050 Garden Road  
 LaBelle, FL 33935  
 813/675-2464

**OTE Status:** Started 11/19/91;  
 actively using OTE

**School Level:** High  
**Number of Students:** 593  
**Area:** Town/Suburban  
**Student Population:**  
**Composition:** 68% White; 9% Black;  
 22% Hispanic; .5% Asian or Pacific  
 Islander; .5% American Indian/Alaska  
 Native  
**Free/Reduced Lunch:** 32%  
**Mobility:** 13%

**Goal:** Not listed  
**Start Date:** Not listed  
**Goal Status:** Not listed  
**Practice Clusters:** Not listed

**172. Lake Oswego Senior High School**

Earl Ingle, Principal  
Lake Oswego Senior High School  
Lake Oswego School District No. 7J  
2501 SW Country Club Road  
Lake Oswego, OR 97034  
503/635-0313

**OTE Status:** Started 10/1/84;  
not actively using OTE

**School Level:** High  
**Number of Students:** 1053  
**Area:** Town/Suburban  
**Student Population:**  
**Composition:** 92% White; 1% Black;  
2% Hispanic; 5% Asian or Pacific  
Islander  
**Free/Reduced Lunch:** 0%  
**Mobility:** 15%

**173. Lakeridge High School**

Sandra Nelson,  
Lakeridge High School  
Lake Oswego School District No. 7J  
PO Box 739  
Lake Oswego, OR 97034  
503/635-0319

**OTE Status:** Started 12/1/83;  
not actively using OTE

**School Level:** High  
**Number of Students:** Not listed  
**Area:** Town/Suburban  
**Student Population:**  
**Composition:** 94% White; .7% Black;  
1% Hispanic; 4% Asian or Pacific  
Islander; .4% American Indian/Alaska  
Native  
**Free/Reduced Lunch:** .2%  
**Mobility:** 9%

**174. Marianna High School**

Rose Cavin, Principal  
Marianna High School  
Jackson County School District  
2979 Daniel Street  
Marianna, FL 32446  
904/482-9605

**OTE Status:** Started 1/31/92;  
actively using OTE

**School Level:** High  
**Number of Students:** 830  
**Area:** Town/Suburban  
**Student Population:**  
**Composition:** 65% White; 35% Black  
**Free/Reduced Lunch:** 20%  
**Mobility:** 5%

**Goal:** Not listed  
**Start Date:** Not listed  
**Goal Status:** Not listed  
**Practice Clusters:** Not listed

**175. McKellar Vocational Center**

William Self, Director  
McKellar Vocational Center  
Columbus Municipal School District  
810 Browder  
Columbus, MS 39702  
601/327-0290

**OTE Status:** Started 10/10/91;  
actively using OTE

**School Level:** High  
**Number of Students:** 400  
**Area:** Small City  
**Student Population:**  
**Composition:** 28% White; 72% Black  
**Free/Reduced Lunch:** 68%  
**Mobility:** 23%



**Goal:** Student Academic Achievement: Critical Thinking

**Start Date:** 1991

**Goal Status:** Progress not yet formally assessed

**Practice Clusters:** 1.2.2; 1.2.3; 1.2.4; 1.3.1; 1.3.2; 1.3.3; 1.3.4; 1.3.5; 1.4.1; 1.4.2; 1.4.3; 1.5.1; 1.6.1; 2.1.1; 2.2.2; 2.3.1; 2.3.2; 2.4.1; 2.5.1; 1.6.1; 1.7.1

**176. New Hope High School**

James Shows, Principal  
New Hope High School  
Lowndes County School District  
3419 New Hope Road  
Columbus, MS 39702  
601/328-7999

**OTE Status:** Started 10/10/91;  
actively using OTE

**School Level:** High

**Number of Students:** 670

**Area:** Large City

**Student Population:**

**Composition:** 67% White; 33% Black

**Free/Reduced Lunch:** 21%

**Mobility:** 5%

**Goal:** Not listed

**Start Date:** 1991

**Goal Status:** Progress not yet formally assessed

**Practice Clusters:** 1.1.1; 1.2.3; 1.2.4; 1.3.1; 1.3.2; 1.3.3; 1.3.4; 1.3.5; 1.4.2; 2.1.2; 2.2.2; 2.2.4; 2.3.1; 2.3.2; 2.3.3; 2.4.1; 2.4.2; 2.6.1; 2.7.1

**177. Pensacola High School**

J. P. Cone, Principal  
Pensacola High School  
Escambia School District  
A & Maxwell Streets  
Pensacola, FL 32501  
904/433-8291

**OTE Status:** Started 8/26/91;  
actively using OTE

**School Level:** High

**Number of Students:** 1850

**Area:** Small City

**Student Population:**

**Composition:** 49% White; 40% Black;  
11% Asian or Pacific Islander

**Free/Reduced Lunch:** 50%

**Mobility:** 20%

**Goal:** Not listed

**Start Date:** 1991

**Goal Status:** Not listed

**Practice Clusters:** 1.1.1; 1.2.1; 1.2.2; 1.2.3; 1.3.1; 1.4.1; 1.4.2; 1.4.3; 1.6.1; 2.2.1; 2.2.2; 2.3.1; 2.6.1

**178. Pine Forest High School**

Robin Lague, Principal  
Pine Forest High School  
Escambia School District  
2500 Longleaf Drive  
Pensacola, FL 32526  
904/944-1121

**OTE Status:** Started 10/31/90;  
actively using OTE

**School Level:** High

**Number of Students:** 1700

**Area:** Large City

**Student Population:**

**Composition:** 78% White; 17% Black;  
4% Hispanic; 1% Asian or Pacific  
Islander

**Free/Reduced Lunch:** 18%

**Mobility:** 25%

**Goal:** Student Behavior: Discipline Referrals  
**Start Date:** Not listed  
**Goal Status:** Met short-term target  
**Practice Clusters:** 1.2.4; 1.4.2; 2.1.1; 2.2.3; 2.4.2

**179. Quivira Heights High School**

Lloyd Holmes, Principal  
Quivira Heights High School  
Lorraine Unified School District 328  
500 South Main; RR#1  
Bushton, KS 67427  
316/562-3597

**OTE Status:** Started 9/4/91;  
actively using OTE

**School Level:** High  
**Number of Students:** 70  
**Area:** Rural  
**Student Population:**  
**Composition:** 94.4% White; 1.4% Black;  
4.2% Hispanic  
**Free/Reduced Lunch:** 24.2%  
**Mobility:** 1.4%

**Goal:** Student Behavior: Responsible Learner  
**Start Date:** Not listed  
**Goal Status:** Not listed  
**Practice Clusters:** 1.2.2; 1.2.3; 1.3.1;  
1.3.2; 1.4.3; 1.5.1; 2.1.2; 2.2.2; 2.3.1;  
2.3.2; 2.5.1

**180. Salina High School South**

E. Jane Botz, Principal  
Salina High School South  
Salina Unified School District 305  
730 Magnolia Road  
Salina, KS 67401  
913/826-9873

**OTE Status:** Started 10/1/91;  
actively using OTE

**School Level:** High  
**Number of Students:** 952  
**Area:** Large City

**Student Population:**  
**Composition:** 92.4% White; 1.8% Black;  
2.2% Hispanic; 3.6% Asian or Pacific  
Islander  
**Free/Reduced Lunch:** 10%  
**Mobility:** Not listed

**Goal:** Not listed  
**Start Date:** Not listed  
**Goal Status:** Not listed  
**Practice Clusters:** Not listed

**181. Stanfield High School**

Ivan Ritchie, Principal  
Stanfield High School  
Stanfield School District No. 61  
1100 North Main  
Stanfield, OR 97875  
503/449-3851

**OTE Status:** Started 8/19/91;  
actively using OTE

**School Level:** High  
**Number of Students:** 155  
**Area:** Rural  
**Student Population:**  
**Composition:** 80% White; 20% Hispanic  
**Free/Reduced Lunch:** 43%  
**Mobility:** 20%

**Goal:** Student Academic Achievement:  
Language Arts  
**Start Date:** 1991  
**Goal Status:** Made some progress toward  
target  
**Practice Clusters:** 1.3.2; 2.1.2; 2.7.1

**182. Sunset High School**

Mick Finn, Principal  
 Sunset High School  
 Beaverton School District No. 48J  
 PO Box 200  
 Beaverton, OR 97075  
 503/591-4690

**OTE Status:** Started 9/1/85;  
 not actively using OTE

**School Level:** High  
**Number of Students:** 1800  
**Area:** Town/Suburban  
**Student Population:**  
**Composition:** 90% White; 2% Hispanic;  
 8% Asian or Pacific Islander  
**Free/Reduced Lunch:** Not listed  
**Mobility:** Not listed

**183. Sutherlin High School**

John Lahley, Principal  
 Sutherlin High School  
 Sutherlin School District No. 130  
 PO Box 1068  
 Sutherlin, OR 97479  
 503/459-9551

**OTE Status:** Started 9/1/88;  
 not actively using OTE

**School Level:** High  
**Number of Students:** 400  
**Area:** Small City  
**Student Population:**  
**Composition:** 97% White; 1% Hispanic;  
 1% Asian or Pacific Islander; 1% Other  
**Free/Reduced Lunch:** Not listed  
**Mobility:** 20%

**184. Tate High School**

Larry Justice, Registrar  
 Tate High School  
 Escambia School District  
 PO Box 68  
 Gonzalez, FL 32560  
 904/968-9522

**OTE Status:** Started 8/26/91;  
 actively using OTE

**School Level:** High  
**Number of Students:** 1865  
**Area:** Town/Suburban  
**Student Population:**  
**Composition:** 84% White; 14.4% Black;  
 .1% Hispanic; .1% Asian or Pacific  
 Islander; .1% American Indian/Alaska  
 Native  
**Free/Reduced Lunch:** 10%  
**Mobility:** 19%

**Goal:** Not listed  
**Start Date:** Not listed  
**Goal Status:** Not listed  
**Practice Clusters:** Not listed

**185. Troy High School**

Jim More, Principal  
 Troy High School  
 Troy School District  
 PO Box 0  
 Troy, MT 59935  
 406/295-4520

**OTE Status:** Started 8/1/87;  
 actively using OTE

**School Level:** High  
**Number of Students:** 350  
**Area:** Rural  
**Student Population:**  
**Composition:** 99% White  
**Free/Reduced Lunch:** 55%  
**Mobility:** 25%

## High Schools

**Goal:** Student Academic Achievement: Writing

**Start Date:** 1985

**Goal Status:** Met short-term target

**Practice Clusters:** 1.1.1; 1.2.2; 1.2.3;  
1.2.4; 1.3.2; 1.3.4; 1.4.1; 1.4.3; 2.3.3

### 186. Walton Senior High School

Cindy Jeselnik, Counselor  
Walton Senior High School  
Walton County School District  
Route 8; Box 590  
DeFuniak Springs, FL 32433  
904/892-7224

**OTE Status:** Started 9/5/91;  
actively using OTE

**School Level:** High

**Number of Students:** 660

**Area:** Town/Suburban

**Student Population:**

**Composition:** 82% White; 17% Black;  
1% Asian or Pacific Islander

**Free/Reduced Lunch:** 30%

**Mobility:** 18%

**Goal:** Student Academic Achievement: Student  
Listening Skills

**Start Date:** 1991

**Goal Status:** Progress not yet formally  
assessed

**Practice Clusters:** 1.2.2; 1.3.2; 1.4.1;  
2.2.2; 2.7.1

### 187. Weston-McEwan High School

Wayne Kostur, Principal  
Weston-McEwan High School  
Athena-Weston School District No. 29J  
PO Box 707  
Athena, OR 97813  
503/566-3555

**OTE Status:** Started 8/1/87;  
actively using OTE

**School Level:** High

**Number of Students:** 175

**Area:** Rural

**Student Population:**

**Composition:** 79% White; 1% Black;  
10% Hispanic; 10% American Indian/  
Alaska Native

**Free/Reduced Lunch:** 34%

**Mobility:** 9%

**Goal:** Not listed

**Start Date:** Not listed

**Goal Status:** Not listed

**Practice Clusters:** Not listed

## Multi-Level Schools

A total of 24 multi-level schools returned questionnaires and are listed in this section. Included are 8 schools with students in grades K to 8; 8 schools with grades 7 to 12; and 5 schools with grades K to 12. Not all schools provided all requested information. All but two of the responding schools have more than 100 students: 18 have 100-499 students, and 4 have 500-1,000 students. In terms of location, 3 are in large cities (over 50,000 population), 2 are in small cities (25,000-50,000) and 19 are in rural areas (2,500 or fewer).

In selecting improvement goals, 10 schools cite goals related to student achievement, 4 cite student behavior goals, and 5 cite student attitude goals. Of those identifying goals, 1 met long-term standards in it's OTE cycle, 13 made some progress toward the target, 1 made little or no progress, and 8 have not yet formally assessed their progress.

**188. Alternative High School**

Gary White, Principal  
 Alternative High School  
 Salina Unified School District 305  
 2640 Scanlon  
 Salina, KS 67401  
 913/826-4680

**OTE Status:** Started 9/1/91;  
 actively using OTE

**School Level:** 7-12

**Number of Students:** 65

**Area:** Small City

**Student Population:**

**Composition:** 80% White; 10% Black;  
 5% Asian or Pacific Islander; 5%  
 American Indian/Alaska Native

**Free/Reduced Lunch:** 95%

**Mobility:** 5%

**Goal:** Student Attitude: School as Place to  
 Learn

**Start Date:** Not listed

**Goal Status:** Not listed

**Practice Clusters:** 1.3.4; 1.4.1; 1.4.2;  
 1.6.1; 2.1.1; 2.2.2; 2.4.2; 2.6.1; 2.7.1

**189. Beggs Educational Center**

Lorin Lovely, Principal  
 Beggs Educational Center  
 Escambia School District  
 2404 Long Leaf Drive  
 Pensacola, FL 32526  
 904/944-9100

**OTE Status:** Started 8/26/91;  
 actively using OTE

**School Level:** 7-12

**Number of Students:** 328

**Area:** Large City

**Student Population:**

**Composition:** 43% White; 55% Black;  
 2% Asian or Pacific Islander

**Free/Reduced Lunch:** 65%

**Mobility:** 32%

**Goal:** Not listed

**Start Date:** Not listed

**Goal Status:** Not listed

**Practice Clusters:** Not listed

**190. Bennington Elementary School**

Bill Becker, Principal  
 Bennington Elementary School  
 Twin Valley Unified School District 240  
 223 North Putnam Street  
 Bennington, KS 67422  
 913/488-3323

**OTE Status:** Started 9/5/91;  
 actively using OTE

**School Level:** K-8

**Number of Students:** 180

**Area:** Rural

**Student Population:**

**Composition:** 100% White

**Free/Reduced Lunch:** 35%

**Mobility:** 5%

**Goal:** Student Attitude: Self as Learner

**Start Date:** 1991

**Goal Status:** Made some progress toward  
 target

**Practice Clusters:** 1.2.1; 1.2.4; 1.4.3;  
 2.2.3; 2.4.2

**191. Corbett High School**

Jim Kuhlmann, Principal  
 Corbett High School  
 Corbett School District No. 39  
 35800 East Crown Point Highway  
 Corbett, OR 97019  
 503/695-3600

**OTE Status:** Started 9/1/88;  
 actively using OTE

**School Level:** 7-12

**Number of Students:** 412

**Area:** Rural

## Multi-Level Schools

### Student Population:

**Composition:** 97% White; 1% Black;  
1% Hispanic; .5% Asian or Pacific  
Islander; .5% American Indian/Alaska  
Native

**Free/Reduced Lunch:** 16%

**Mobility:** 7%

**Goal:** Student Behavior: Discipline Referrals

**Start Date:** 1988

**Goal Status:** Little or no progress

**Practice Clusters:** 1.2.3; 1.2.4; 1.4.2;  
2.2.3; 2.4.2

### 192. Denton Schools

Lex Cabot, Superintendent  
Denton Schools  
Denton School District No. 84  
PO Box 1048  
Denton, MT 59430  
406/567-2270

**OTE Status:** Started 8/1/87;  
not actively using OTE

**School Level:** K-12

**Number of Students:** 185

**Area:** Rural

**Student Population:**

**Composition:** 100% White

**Free/Reduced Lunch:** Not listed

**Mobility:** 3%

### 193. Ernest Ward High School

Jim May, Principal  
Ernest Ward High School  
Escambia School District  
215 West Garden Street  
Pensacola, FL 32506  
904/327-4283

**OTE Status:** Started 8/26/91;  
actively using OTE

**School Level:** 7-12

**Number of Students:** 460

**Area:** Rural

### Student Population:

**Composition:** 89% White; 10% Black;  
1% American Indian/Alaska Native

**Free/Reduced Lunch:** 12%

**Mobility:** 3%

**Goal:** Student Academic Achievement

**Start Date:** 1991

**Goal Status:** Progress not yet formally  
assessed

**Practice Clusters:** 1.2.2; 1.2.4; 1.3.2;  
1.4.1; 1.4.3; 2.1.1; 2.2.2

### 194. Escambia Westgate Special Education Center

Tom Harrell, Principal  
Escambia Westgate Special Education Center  
Escambia School District  
10050 Ashton Brosnahan Drive  
Pensacola, FL 32534  
904/494-5700

**OTE Status:** Started 10/31/90;  
actively using OTE

**School Level:** K-12

**Number of Students:** 220

**Area:** Large City

**Student Population:**

**Composition:** 57% White; 42% Black;  
1% Asian or Pacific Islander

**Free/Reduced Lunch:** 74%

**Mobility:** 5%

**Goal:** Student Academic Achievement:  
Community-Based Instruction

**Start Date:** 1990

**Goal Status:** Made some progress toward  
target

**Practice Clusters:** 1.1.1; 2.4.2; 2.7.1

**195. Freeport High School**

Vickie Schofield, Teacher  
 Freeport High School  
 Walton County School District  
 Kylea Laird Drive  
 Freeport, FL 32439  
 904/835-4222

**OTE Status:** Started 9/5/91;  
 actively using OTE

**School Level:** 7-12

**Number of Students:** 500

**Area:** Rural

**Student Population:**

**Composition:** 96% White; 1% Black;  
 1% Asian or Pacific Islander; 2%  
 American Indian/Alaska Native

**Free/Reduced Lunch:** 31%

**Mobility:** 37%

**Goal:** Student Academic Achievement:  
 Academic Performance

**Start Date:** 1991

**Goal Status:** Progress not yet formally  
 assessed

**Practice Clusters:** Not listed

**196. Gervais Elementary School**

David Nuss, Superintendent  
 Gervais Elementary School  
 Gervais Elementary School District No. 76  
 PO Box 176  
 Gervais, OR 97026  
 503/792-3624

**OTE Status:** Started 1/20/88;  
 actively using OTE

**School Level:** K-8

**Number of Students:** 340

**Area:** Rural

**Student Population:**

**Composition:** 48% White; 52% Hispanic

**Free/Reduced Lunch:** 58%

**Mobility:** 28%

**Goal:** Student Academic Achievement:  
 Reading

**Start Date:** 1998

**Goal Status:** Made some progress toward  
 target

**Practice Clusters:** 1.2.2; 1.3.2; 1.4.1;  
 2.1.2; 2.2.2; 2.5.1; 2.7.1

**197. Grand Ridge School**

John Hamilton, Principal  
 Grand Ridge School  
 Jackson County School District  
 6925 Florida Avenue  
 Grand Ridge, FL 32442  
 904/592-5161

**OTE Status:** Started 1/31/92;  
 actively using OTE

**School Level:** K-12

**Number of Students:** 729

**Area:** Rural

**Student Population:**

**Composition:** 72% White; 28% Black

**Free/Reduced Lunch:** 50%

**Mobility:** 30%

**Goal:** Not listed

**Start Date:** Not listed

**Goal Status:** Not listed

**Practice Clusters:** Not listed

**198. Hope School**

Nettie Barnes, Principal  
 Hope School  
 Jackson County School District  
 2031 Hope School Drive  
 Marianna, FL 32446  
 904/482-9616

**OTE Status:** Started 1/31/92;  
 actively using OTE

**School Level:** K-12; Special Education

**Number of Students:** 264

**Area:** Rural



## Multi-Level Schools

### Student Population:

**Composition:** 55% White; 45% Black

**Free/Reduced Lunch:** 79%

**Mobility:** Not listed

**Goal:** Student Academic Achievement: All Curriculum Areas

**Start Date:** Not listed

**Goal Status:** Made some progress toward target

**Practice Clusters:** 1.1.1; 1.2.1; 1.2.2; 1.2.3; 1.2.4; 1.3.1; 1.3.2; 1.3.4; 1.3.5; 1.4.1; 1.4.2; 1.4.2; 1.5.1; 1.6.1; 2.1.1; 2.1.2; 2.2.1; 2.2.2; 2.2.3; 2.2.4; 2.3.1; 2.3.2; 2.3.3; 2.4.1; 2.4.2; 2.5.1; 2.6.1; 2.7.1

### 199. Lacombe Elementary School

Eldon Wortman, Principal  
Lacombe Elementary School  
Lacombe School District No. 73C  
34110 East Lacombe Road  
Lebanon, OR 97355  
503/258-6489

**OTE Status:** Started 10/1/87;  
actively using OTE

**School Level:** K-8

**Number of Students:** 290

**Area:** Rural

**Student Population:**

**Composition:** 95% White; 2% Hispanic;  
3% American Indian/Alaska Native

**Free/Reduced Lunch:** 26%

**Mobility:** 30%

**Goal:** Student Academic Achievement: Writing

**Start Date:** 1989

**Goal Status:** Made some progress toward target

**Practice Clusters:** 1.1.1; 1.3.2; 1.3.4; 1.3.5; 1.4.1; 1.4.2; 1.4.3; 2.1.1; 2.1.2; 2.3.3; 2.4.1; 2.7.1

### 200. Lelu Elementary School

John Edwin, Principal  
Lelu Elementary School  
Kosrae Department of Education  
PO Box ED  
Tofol, Kosrae, FM 96944  
691/729-6872

**OTE Status:** Started 2/1/88;  
actively using OTE

**School Level:** K-8

**Number of Students:** 664

**Area:** Rural

**Student Population:**

**Composition:** 100% Asian or Pacific Islander

**Free/Reduced Lunch:** 90%

**Mobility:** 10%

**Goal:** Student Academic Achievement:  
Reading

**Start Date:** 1989

**Goal Status:** Met long-term standard

**Practice Clusters:** Not listed

### 201. Lost River High School

William Willey, Principal  
Lost River High School  
Klamath County School District  
23330 Highway 50  
Merrill, OR 97633  
503/798-5666

**OTE Status:** Started 10/1/89;  
actively using OTE

**School Level:** 7-12

**Number of Students:** 262

**Area:** Rural

**Student Population:**

**Composition:** 83% White; 17% Hispanic

**Free/Reduced Lunch:** 46%

**Mobility:** 15%

**Goal:** Student Behavior: Responsible Learner

**Start Date:** 1991

**Goal Status:** Progress not yet formally assessed

**Practice Clusters:** 1.1.1; 1.4.1; 1.4.2; 2.3.2; 2.3.3; 2.4.1; 2.4.2; 2.6.1

**202. Lowndes County Vocational Complex**

Don Harding, Vocational Director  
 Lowndes County Vocational Complex  
 Lowndes County School District  
 664 South Frontage Road  
 Columbus, MS 39701  
 601/327-7115

**OTE Status:** Started 10/10/91;  
 actively using OTE

**School Level:** 7-12

**Number of Students:** 191

**Area:** Small City

**Student Population:**

**Composition:** 40% White; 60% Black

**Free/Reduced Lunch:** 85%

**Mobility:** 20%

**Goal:** Student Academic Achievement:  
 Vocational Achievement

**Start Date:** 1991

**Goal Status:** Made some progress toward  
 target

**Practice Clusters:** 1.1.1; 1.2.4; 1.3.4;  
 1.6.1; 2.2.1; 2.2.3; 2.3.2; 2.4.2; 2.5.1;  
 2.6.1

**203. Paxton School**

Virginia Pridgen, Principal  
 Paxton School  
 Walton County School District  
 PO Box 1168  
 Paxton, FL 32538  
 904/834-2111

**OTE Status:** Started 9/5/91;  
 actively using OTE

**School Level:** K-12

**Number of Students:** 588

**Area:** Rural

**Student Population:**

**Composition:** 94% White; 6% Black

**Free/Reduced Lunch:** 52%

**Mobility:** 1%

**Goal:** Student Attitude

**Start Date:** 1991

**Goal Status:** Made some progress toward  
 target

**Practice Clusters:** Not listed

**204. Rota Elementary School**

Jesus Songsong, Acting Principal  
 Rota Elementary School  
 Northern Mariana Islands Public School System  
 PO Box 1370 CK  
 Saipan, MP 96950  
 670/322-9812

**OTE Status:** Started 12/1/88;  
 not actively using OTE

**School Level:** K-8

**Number of Students:** 395

**Area:** Rural

**Student Population:**

**Composition:** .7% White; 99.3% Asian or  
 Pacific Islander

**Free/Reduced Lunch:** 100%

**Mobility:** 4%

**205. Schuebel Elementary School**

Fred Proett, Superintendent  
 Schuebel Elementary School  
 Schuebel School District No. 80  
 23931 South Schuebel School Road  
 Beavercreek, OR 97004  
 503/632-3316

**OTE Status:** Started 9/1/88;  
 not actively using OTE

**School Level:** K-8

**Number of Students:** 76

**Area:** Rural

**Student Population:**

**Composition:** 91% White; 6% Hispanic;  
 3% Asian or Pacific Islander

**Free/Reduced Lunch:** 0%

**Mobility:** 12%

*Multi-Level Schools*

**206. Sidney Nelson Middle High School**

Michelle Kaczynski, OTE Chair  
Sidney Nelson Middle High School  
Escambia School District  
648 Muscogee Road  
Cantonment, FL 32533  
904/968-1255

**OTE Status:** Started 10/31/90;  
actively using OTE

**School Level:** 6-12

**Number of Students:** 264

**Area:** Large City

**Student Population:**

**Composition:** 39% White; 59% Black;  
1% Asian or Pacific Islander; 1%  
American Indian/Alaska Native

**Free/Reduced Lunch:** 78%

**Mobility:** 49%

**Goal:** Student Behavior: Discipline Referrals

**Start Date:** 1990

**Goal Status:** Progress not yet formally  
assessed

**Practice Clusters:** Not listed

**207. Solomon Junior/Senior High School**

Steve Wolf, Principal  
Solomon Junior/Senior High School  
Solomon Unified School District 393  
400 North Walnut  
Solomon, KS 67480  
913/655-2551

**OTE Status:** Started 9/4/91;  
actively using OTE

**School Level:** 7-12

**Number of Students:** 120

**Area:** Rural

**Student Population:**

**Composition:** 100% White

**Free/Reduced Lunch:** 45%

**Mobility:** 7%

**Goal:** Student Attitude: School as Place to  
Learn

**Start Date:** 1991

**Goal Status:** Progress not yet formally  
assessed

**Practice Clusters:** 1.4.2; 1.4.3; 2.2.4;  
2.4.2; 2.7.1

**208. Tescott Elementary School**

Martin Helmer, Principal  
Tescott Elementary School  
Twin Valley Unified School District 240  
305 North Minnesota Street  
Tescott, KS 67484  
913/283-4774

**OTE Status:** Started 9/5/91;  
actively using OTE

**School Level:** K-8

**Number of Students:** 160

**Area:** Rural

**Student Population:**

**Composition:** 98% White; 1% Hispanic;  
1% American Indian/Alaska Native

**Free/Reduced Lunch:** 40%

**Mobility:** 1%

**Goal:** Student Attitude: Self-Image

**Start Date:** 1991

**Goal Status:** Progress not yet formally  
assessed

**Practice Clusters:** 1.2.1; 1.2.4; 1.4.1;  
1.4.2; 1.4.3; 1.6.1; 2.2.3; 2.2.4; 2.4.2

**209. Utwe Elementary School**

Albert Tilfas, Principal  
 Utwe Elementary School  
 Kosrae Department of Education  
 PO Box ED  
 Tofol, Kosrae, FM 96944  
 691/729-6872

**OTE Status:** Started 2/1/88;  
 actively using OTE

**School Level:** K-8  
**Number of Students:** 334  
**Area:** Rural  
**Student Population:**  
**Composition:** 100% Asian or Pacific Islander  
**Free/Reduced Lunch:** 100%  
**Mobility:** 2%

**Goal:** Student Academic Achievement:  
 Reading  
**Start Date:** 1987  
**Goal Status:** Made some progress toward  
 target  
**Practice Clusters:** 1.1.1; 1.2.1; 1.3.1;  
 1.3.2; 1.3.3; 1.5.1; 1.6.1; 2.1.1; 2.1.2;  
 2.2.1; 2.2.2; 2.2.3; 2.2.4; 2.3.1; 2.3.2;  
 2.5.1; 2.6.1; 2.7.1

**210. Walton County Voc-Tech**

Marilyn Holley, Vocational Director  
 Walton County Voc-Tech  
 Walton County School District  
 850 North 20th Street  
 DeFuniak Springs, FL 32433  
 904/892-8105

**OTE Status:** Started 9/5/91;  
 actively using OTE

**School Level:** K-12; Adult Education  
**Number of Students:** 196  
**Area:** Rural  
**Student Population:**  
**Composition:** 95% White; 4% Black;  
 1% Hispanic  
**Free/Reduced Lunch:** Not listed  
**Mobility:** 5%

**Goal:** Student Behavior  
**Start Date:** 1991  
**Goal Status:** Progress not yet formally  
 assessed  
**Practice Clusters:** 1.3.1; 1.3.2; 2.2.3;  
 2.2.4; 2.3.3; 2.5.1; 2.6.1; 2.7.1

**211. White City Schools**

Mary Lawrenz, Head Teacher  
 White City Schools  
 Rural Vista Unified School District 481  
 PO Box 8  
 White City, KS 66872  
 913/349-2211

**OTE Status:** Started 9/5/91;  
 actively using OTE

**School Level:** K-12  
**Number of Students:** 204  
**Area:** Rural  
**Student Population:**  
**Composition:** 100% White  
**Free/Reduced Lunch:** 35%  
**Mobility:** 10%

**Goal:** Student Academic Achievement:  
 Reading  
**Start Date:** 1991  
**Goal Status:** Progress not yet formally  
 assessed  
**Practice Clusters:** 1.2.2; 1.3.2; 1.3.3;  
 1.3.4; 1.4.1; 1.6.1

---

## Index I:

### Effective Schooling Research Practice Clusters

These practice clusters are used in each directory entry in the "School Practice Clusters" section. The clusters appear in the publication *Effective Schooling Practices: A Research Synthesis/1990 Update* (NWREL 1990).

---

# Index I: Practice Clusters

## 1. Classroom Characteristics and Practices

### 1.1 Planning and Learning Goals

- 1.1.1 Instruction is guided by a preplanned curriculum

### 1.2 Classroom Organization and Management

- 1.2.1 Instructional groups formed in the classroom fit students' academic and affective needs
- 1.2.2 Classroom learning time is used efficiently
- 1.2.3 There are smooth, efficient classroom routines
- 1.2.4 Standards for classroom behavior are explicit and are consistently and equitably enforced

### 1.3 Instruction

- 1.3.1 Students are carefully oriented to lessons
- 1.3.2 Instruction is clear and focused
- 1.3.3 Effective questioning techniques are used to build basic and higher-level skills
- 1.3.4 Students routinely receive feedback and reinforcement regarding their learning progress
- 1.3.5 Review and reteaching are carried out as necessary to help all students master learning material

### 1.4 Teacher-Student Interactions

- 1.4.1 There are high expectations for student learning
- 1.4.2 Incentives and rewards for students are used to promote excellence
- 1.4.3 Personal interactions between teachers and students are positive

### 1.5 Assessment

- 1.5.1 Learning progress is monitored closely

### 1.6 Special Students and Programs

- 1.6.1 Students at risk of school failure are given the extra time and help they need to succeed

---

## 2. School Characteristics and Practices

### 2.1 Planning and Learning Goals

- 2.1.1 Everyone emphasizes the importance of learning
- 2.1.2 The curriculum is based on clear goals and objectives

### 2.2 School Organization and Management

- 2.2.1 Students are grouped to promote effective instruction
- 2.2.2 School time is used for learning
- 2.2.3 Discipline is firm and consistent
- 2.2.4 There are pleasant conditions for teaching and learning

### 2.3 Leadership and School Improvement

- 2.3.1 Strong leadership guides the instructional program
- 2.3.2 Administrators and teachers continually strive to improve instructional effectiveness
- 2.3.3 Staff engage in ongoing professional development and collegial learning activities

### 2.4 Administrator-Teacher-Student Interactions

- 2.4.1 There are high expectations for quality instruction
- 2.4.2 Incentives and rewards are used to build strong student and staff motivation

### 2.5 Assessment

- 2.5.1 Learning progress is monitored closely

### 2.6 Special Students and Programs

- 2.6.1 Students at risk of school failure are provided programs to help them succeed

### 2.7 Parent and Community Involvement

- 2.7.1 Parents and community members are invited to become involved

---

## Index II:

### Practice Clusters Selected by Schools

During the *Onward to Excellence* process, schools select practice clusters from *Effective Schooling Practices: A Research Synthesis/1990 Update* to use as a basis for their improvement prescriptions. In this index, all schools that have selected practice clusters for preparing their prescriptions are listed. If a school has multiple goals, practice clusters for the first goal are noted as "A," for the second goal "B," etc.



---

## **Index II: Practice Clusters Selected by Schools**

---

### **1.1.1 Instruction is guided by a preplanned curriculum**

8, 13, 15, 21, 32, 30, 31, 44, 50, 51, 52, 54, 62, 64A, 64B, 80, 81, 88, 94, 97, 111, 119, 122, 123, 125, 133, 137, 143A, 143B, 143C, 144, 146, 153, 154, 158, 159, 162, 163, 164, 176, 177, 185, 194, 198, 199, 201, 202, 209

---

### **1.2.1 Instructional groups formed in the classroom fit students' academic and affective needs**

8, 9, 21, 30, 38, 49, 50, 51, 60, 64A, 64B, 72, 80, 84, 88, 95, 119, 122, 123, 125, 137, 144, 177, 190, 198, 208, 209

---

### **1.2.2 Classroom learning time is used efficiently**

1, 9, 13, 21, 23, 38, 45, 50, 51, 52, 54, 62, 64A, 64B, 72, 80, 84, 85, 89, 97, 111, 119, 122, 123, 125, 127, 133, 137, 143A, 143B, 143C, 158, 162, 175, 177, 179, 185, 186, 193, 196, 198, 211

---

### **1.2.3 There are smooth, efficient classroom routines**

1, 9, 13, 21, 38, 50, 51, 52, 54, 64A, 64B, 64C, 78, 80, 84, 89, 97, 101, 111, 119, 122, 123, 125, 127, 137, 150, 158, 159, 162, 175, 176, 177, 179, 185, 191, 198

---

---

**1.2.4 Standards for classroom behavior are explicit and are consistently and equitably applied**

5, 13, 21, 23, 30, 34, 50, 51, 52, 54, 59, 64C, 66, 70, 78, 80, 81, 86, 110, 111, 119, 122, 123, 125, 127, 130, 132, 136, 137, 147, 150, 153, 158, 162, 169, 175, 176, 178, 185, 190, 191, 193, 198, 202, 208

---

**1.3.1 Students are carefully oriented to lessons**

4, 13, 21, 26A, 26B, 30, 50, 51, 54, 64A, 64B, 81, 111, 114, 119, 122, 123, 125, 137, 143A, 143B, 143C, 175, 176, 177, 179, 198, 209, 910

---

**1.3.2 Instruction is clear and focused**

4, 13, 21, 23, 30, 31, 38, 45, 50, 51, 54, 59, 62, 72, 80, 81, 88, 89, 92, 94, 101, 103, 108, 111, 114, 119, 122, 123, 125, 129, 137, 143A, 143B, 143C, 146, 154, 158, 162, 175, 176, 179, 181, 185, 186, 193, 196, 198, 199, 209, 210, 211

---

**1.3.3 Effective questioning techniques are used to build basic and higher-level skills**

12, 13, 21, 23, 25, 30, 38, 50, 51, 74, 81, 84, 111, 119, 122, 123, 125, 129, 137, 146, 175, 176, 209, 211

---

**1.3.4 Students routinely receive feedback and reinforcement regarding their learning progress**

13, 15, 21, 22, 23, 30, 38, 50, 51, 64A, 64B, 81, 88, 89, 111, 119, 122, 123, 125, 137, 143A, 143B, 143C, 146, 158, 159, 162, 175, 176, 185, 188, 198, 199, 202, 211

---

---

**1.3.5 Review and reteaching are carried out as necessary to help all students master learning material**

8, 9, 13, 21, 23, 25, 26A, 26B, 30, 45, 50, 51, 54, 63, 64A, 64B, 81, 88, 89, 92, 101, 111, 119, 122, 123, 125, 137, 143A, 143B, 143C, 153, 159, 162, 175, 176, 198, 199

---

**1.4.1 There are high expectations for student learning**

1, 8, 12, 13, 15, 21, 23, 30, 31, 35, 38, 45, 50, 51, 57, 74, 78, 80, 81, 83, 84, 86, 88, 89, 101, 111, 118, 119, 122, 123, 125, 137, 143A, 143B, 143C, 146, 154, 158, 159, 162, 164, 166, 169, 175, 177, 185, 186, 188, 193, 196, 198, 199, 201, 208, 211

---

**1.4.2 Incentives and rewards for students are used to promote excellence**

1, 5, 12, 13, 21, 22, 23, 25, 29, 30, 34, 35, 44, 50, 54, 61, 64A, 64B, 64C, 78, 80, 81, 88, 89, 95, 108, 111, 114, 117, 119, 120, 122, 123, 125, 127, 132, 137, 143A, 143B, 143C, 146, 147, 148, 150, 159, 162, 175, 176, 177, 178, 188, 191, 198, 199, 201, 207, 208

---

**1.4.3 Personal interactions between teachers and students are positive**

5, 8, 9, 13, 21, 22, 23, 30, 38, 48, 50, 51, 52, 60, 61, 64C, 70, 81, 84, 88, 89, 95, 97, 110, 111, 117, 119, 122, 123, 125, 126, 127, 130, 136, 137, 143A, 143B, 143C, 147, 150, 152, 158, 162, 164, 169, 175, 177, 179, 185, 190, 193, 199, 206, 208

---

**1.5.1 Learning progress is monitored closely**

1, 9, 13, 15, 21, 23, 30, 45, 50, 51, 52, 57, 62, 63, 64A, 64B, 72, 80, 81, 83, 89, 94, 101, 111, 119, 122, 123, 125, 137, 143A, 143B, 143C, 149, 154, 159, 162, 175, 179, 198, 209

---

---

**1.6.1 Students at risk of school failure are given the extra time and help they need to succeed**

1, 8, 10, 21, 23, 25, 30, 38, 44, 45, 48, 50, 51, 54, 63, 64A, 64B, 64C, 80, 81, 83, 84, 91, 111, 117, 118, 119, 122, 123, 125, 127, 133, 137, 143A, 143B, 143C, 147, 148, 159, 164, 169, 175, 177, 188, 198, 202, 208, 209, 211

---

**2.1.1 Everyone emphasizes the importance of learning**

1, 8, 15, 21, 22, 23, 29, 30, 50, 51, 52, 64A, 64B, 64C, 80, 81, 84, 88, 89, 91, 101, 111, 118, 119, 122, 123, 125, 137, 143A, 143B, 143C, 148, 159, 162, 164, 166, 175, 178, 188, 193, 198, 199, 209

---

**2.1.2 The curriculum is based on clear goals and objectives**

1, 12, 13, 15, 21, 23, 30, 50, 51, 52, 54, 64A, 64B, 81, 111, 119, 122, 123, 125, 137, 143A, 143B, 143C, 153, 158, 159, 176, 179, 181, 196, 198, 199, 209

---

**2.2.1 Students are grouped to promote effective instruction**

13, 21, 30, 45, 50, 51, 64A, 64B, 64C, 81, 84, 97, 119, 122, 123, 125, 137, 158, 163, 177, 198, 202, 209

---

**2.2.2 School time is used for learning**

8, 9, 13, 21, 22, 23, 30, 31, 50, 51, 54, 81, 84, 88, 89, 91, 108, 111, 118, 119, 122, 123, 125, 133, 137, 143A, 143B, 143C, 147, 158, 162, 163, 164, 175, 176, 177, 179, 186, 188, 193, 196, 198, 209

---

---

### **2.2.3 Discipline is firm and consistent**

1, 5, 8, 13, 21, 22, 23, 29, 30, 34, 51, 52, 54, 64C, 67, 78, 79, 80, 81, 86, 91, 101, 105, 110, 111, 119, 122, 123, 125, 127, 130, 133, 136, 137, 143A, 143B, 143C, 147, 149, 150, 152, 153, 158, 159, 162, 164, 169, 178, 190, 191, 198, 202, 208, 209, 210

---

### **2.2.4 There are pleasant conditions for teaching and learning**

8, 13, 21, 22, 23, 30, 50, 51, 54, 64C, 78, 79, 81, 88, 111, 119, 122, 123, 125, 130, 137, 143A, 143B, 143C, 148, 158, 162, 163, 164, 169, 176, 198, 207, 208, 209, 210

---

### **2.3.1 Strong leadership guides the instructional program**

8, 13, 21, 22, 30, 50, 51, 52, 54, 78, 81, 86, 88, 111, 119, 122, 123, 125, 133, 137, 143A, 143B, 143C, 148, 158, 159, 162, 164, 166, 175, 176, 177, 179, 198, 209

---

### **2.3.2 Administrators and teachers continually strive to improve instructional effectiveness**

1, 13, 21, 22, 23, 50, 51, 52, 54, 64A, 64B, 74, 81, 88, 89, 91, 97, 101, 108, 111, 119, 122, 123, 125, 133, 137, 143A, 143B, 143C, 144, 148, 162, 163, 164, 166, 175, 176, 179, 198, 201, 202, 209

---

### **2.3.3 Staff engage in ongoing professional development and collegial learning activities**

12, 13, 21, 30, 50, 51, 54, 74, 76, 77, 80, 81, 84, 88, 89, 91, 92, 111, 119, 122, 123, 125, 126, 133, 137, 143A, 143B, 143C, 159, 176, 185, 198, 199, 201, 210

---

**2.4.1 There are high expectations for quality instruction**

8, 12, 13, 21, 23, 30, 50, 51, 54, 78, 80, 81, 88, 89, 91, 92, 108,  
111, 114, 119, 122, 123, 125, 133, 137, 143A, 143B, 143C, 158,  
159, 162, 163, 166, 169, 175, 176, 198, 199, 201

---

**2.4.2 Incentives and rewards are used to build strong student and staff motivation**

1, 5, 8, 12, 13, 21, 22, 23, 25, 30, 35, 44, 50, 52, 54, 61, 64C,  
77, 78, 79, 80, 81, 88, 89, 95, 101, 117, 119, 120, 122, 123, 125,  
126, 129, 130, 137, 143A, 143B, 143C, 144, 147, 148, 150, 159,  
162, 176, 178, 188, 190, 191, 194, 198, 201, 202, 207, 208

---

**2.5.1 Learning progress is monitored closely**

13, 15, 21, 23, 30, 35, 49, 50, 51, 52, 54, 76, 78, 81, 84, 85, 89,  
97, 101, 111, 119, 122, 123, 125, 137, 143A, 143B, 143C, 144,  
159, 175, 179, 196, 198, 202, 209, 210

---

**2.6.1 Students at risk of school failure are provided programs to help them succeed**

1, 8, 15, 21, 23, 25, 30, 44, 48, 50, 51, 54, 60, 64C, 72, 81, 88,  
97, 110, 111, 117, 119, 122, 123, 125, 137, 143A, 143B, 143C,  
144, 147, 158, 159, 163, 164, 169, 176, 177, 188, 198, 201, 202,  
209, 210

---

**2.7.1 Parents and community members are invited to become involved**

1, 13, 21, 22, 23, 26A, 26B, 30, 35, 38, 44, 50, 51, 52, 54, 61,  
76, 77, 78, 80, 81, 86, 88, 91, 97, 101, 103, 111, 117, 119, 120,  
122, 123, 125, 130, 137, 143A, 143B, 143C, 144, 147, 148, 149,  
150, 152, 159, 164, 166, 176, 181, 186, 188, 194, 196, 198, 199,  
207, 209, 210

---

---

## **Index III:**

### **Goal and Content Areas Selected by Schools**

Schools are listed in three goal areas: student academic achievement, student behavior and student attitude. Within these goal areas, schools are listed alphabetically according to the specific content area selected in each goal area.

# INDEX III: GOAL AND CONTENT AREAS SELECTED BY SCHOOLS

## STUDENT ACADEMIC ACHIEVEMENT GOALS

### READING

#### Elementary Schools

8. Bratt Elementary School	John Dell Hucabee (Mrs.)	904/327-6137	5721 North Highway 99	Century	FL	32535
10. Brentwood Elementary School	Gwen Talbot	904/444-2730	4820 North Palatka Street	Pensacola	FL	32505
13. Caledonia Elementary School	Roger Hill	601/356 4936	111 Confederate Drive	Caledonia	MS	39740
16. Central Elementary School	Howard McKire	813/983-4155	1000 South Deane Duff Avenue	Clewiston	FL	33440
19. Churchill Elementary School	Stuart Nelson	307/771-2410	510 West 29th Street	Cheyenne	WY	82001
21. Coleman Elementary School	Donnie Goss	601/328-4337	723 22nd Street South	Columbus	MS	39701
23. Curbullido School	Norma Tabayoyong	671/472-8901	PO Box ED	Agana	GU	96910
25. Demonstration Elementary School	Alma Turner	601/329-7358	W-Box 1517	Columbus	MS	39701
28. Eastside Elementary School	C. Gordon Swaggerty Jr.	813/983-6113	201 West Arroyo Avenue	Clewiston	FL	33440
33. Fawcett Elementary School	Kim Johnson	206/596-2064	126 East 60th Street	Tacoma	WA	98404
35. Fort Davis Elementary School	Mary Hoffman		Panama Region	APO Miami	FL	34002
39. Garfield Elementary School	Darrel Burbank	208/338-3445	1914 Broadway	Boise	ID	83706
44. Hallmark Elementary School	J. P. McLaughlin	904/444-2755	115 South E Street	Pensacola	FL	32501
50. Huglies Elementary School	Marshall Wicks	601/328-5006	1820 22nd Street North	Columbus	MS	39701
54. Jim Allen Elementary School	Hubert Williford	904/968-9671	1051 Highway 95A North	Cantonment	FL	32533
57. Lewis & Clark Elementary School	Mary Ann Cosgrove	406/791-2208	3800 1st Avenue South	Great Falls	MT	59403
58. Lincoln Park Elementary School	Deborah Malishan	904/494-5620	7600 Kershaw Street	Pensacola	FL	32534
60. Lister Elementary School	Sharon Krause	206/596-2066	2106 East 44th	Tacoma	WA	98328
62. Loy Elementary School	Les Duncan	406/791-2243	501 57th Street North	Great Falls	MT	59400
64. Marion Park School	Sherry Morgan	601/484-4977	2815 25th Street	Meridian	MS	39305
71. Molalla Primary School	Ray Halter	503/829-4333	PO Box 206	Molalla	OR	97038
72. Molino Elementary School	Helen Adams	904/587-5265	6450 Highway 95 A N	Cantonment	FL	32514
76. Myrtle Grove Elementary School	Sandra Edwards	904/455-3533	6115 Lillian Highway	Pensacola	FL	32506
77. Navy Point Elementary School	Sally Spieak	904/453-7415	1321 Patton Drive	Pensacola	FL	32507
82. Oak Grove Elementary School	Emily Clemens	503/362-3345	2700 Oak Grove Road	Rickreal	OR	97371
83. Oakridge Elementary School	Michael Lambert	503/782-3226	48119 West 1st Street	Oakridge	OR	97463
92. Riviera Elementary School	Meg Valentine	503/963-1945	2607 2nd Street	La Grande	OR	97850
94. Rogers Elementary School	Lei Lani Jackson	206/596-1380	1301 East 34th Street	Tacoma	WA	98404
97. Sam Case Elementary School	Ron Corbell	503/265-8598	459 NE 12th Street	Newport	OR	97365
98. San Vicente Elementary School	Ana Larson	670/322-9812	PO Box 1370 CK	Saipan	MP	96950
101. Semmes Elementary School	Otha Leverette	904/444-2781	1250 East Texar	Pensacola	FL	32502
108. Sunnyside Elementary School	Mike Schwenden	406/791-2262	1800 19th Street South	Great Falls	MT	59405
114. Washington-Hoyt Elementary School	Sandra Roszman	206/752-8916	3701 North 26th Street	Tacoma	WA	98407
119. West Lowndes Elementary School	Fred Young	601/328-7772	1000 Gilmer Wilburn Road	Columbus	MS	39701
125. Willow Elementary School	Vernon Yoshioka	503/963-1950	1305 Willow Street	La Grande	OR	97850



## STUDENT ACADEMIC ACHIEVEMENT GOALS

92

### Middle/Junior High Schools

134. Clewiston Middle School	813/983-9134	601 West Osceola	Clewiston	FL	33440
146. Mead Junior High School	303/535-4447	2738 Weld County Road 34	Mead	CO	80542
148. Piti Middle School	671/472-8901	PO Box ED	Agana	GU	96910
154. Workman Middle School	904/494-5665	5299 Lanier Drive	Pensacola	FL	32503

### Multi-Level Schools

196. Gervais Elementary School	503/792-3624	PO Box 176	Gervais	OR	97026
200. Lelu Elementary School	691/729-6872	PO Box ED	Tofol, Kosiap	FM	96944
209. Utwe Elementary School	691/729-6872	PO Box ED	Tofol, Kosiap	FM	96944
211. White City Schools	913/349-2211	PO Box 8	White City	KS	66872

### MATH

#### Elementary Schools

2. Bay Elementary School	904/231-4215	Route 2, Box 3310	Santa Rosa Beach	FL	32459
12. Cairo Elementary School	503/889-5745	531 Highway 20/26	Ontario	OR	97914
22. Country Oaks Elementary School	813/675-3303	2052 NW Eucalyptus Blvd.	LaBelle	FL	33935
26. Diablo Elementary School		DoDDSPanama; Unit 0925	APO	AA	34002
38. Garfield Elementary School	406/255-3843	3212 First Avenue South	Billings	MT	59101
45. Happy Corner Elementary School	913/827-8891	1757 North Halstead Road	Salina	KS	67401
51. Hygiene Elementary	303/776-0855	11968 North 75th Street	Hygiene	CO	80533
63. Malad Elementary	208/766-2255	250 West 4th North Street	Malad	ID	83252
85. Pensacola Beach Elementary School	904/992-5346	900 Via De Luna Drive	Gulf Breeze	FL	32561
99. Scenic Heights Elementary School	904/494-5635	3801 Cherry Laurel Lane	Pensacola	FL	32504
111. Thatcher Elementary School	208/427-6346	6007 East Thatcher Road	Thatcher	ID	83283
118. West Grade School	503/449-3305	405 North Sherman; PO Box 219	Stanfield	OR	97875

### WRITING

#### Elementary Schools

3. Bellview Elementary School	904/944-0100	4425 Bellview Avenue	Pensacola	FL	32526
15. Centennial Elementary School	503/394-3265	38875 NW First Avenue	Scio	OR	97374
53. Jefferson Elementary School	503/776-8845	333 Holmes Avenue	Medford	OR	97501

**STUDENT ACADEMIC ACHIEVEMENT GOALS**

**High Schools**

156. Caledonia High School	Orman Bridges	601/356-4988	111 Confederate Drive	Caledonia	MS	39740
158. Capitol High School	Ron Arnold	208/322-3875	8055 Goddard	Boise	ID	83704
185. Troy High School	Jim More	406/295-4520	PO Box 0	Troy	MT	59935

**Multi-Level Schools**

199. Lacombe Elementary School	Eldon Wortman	503/258-6489	34110 East Lacombe Road	Lebanon	OR	97355
--------------------------------	---------------	--------------	-------------------------	---------	----	-------

**CRITICAL THINKING**

**Elementary Schools**

74. Mont Downing Elementary School	Daryl R. Ashpole	206/596-2253	2502 North Orchard	Tacoma	WA	98406
------------------------------------	------------------	--------------	--------------------	--------	----	-------

**High Schools**

162. Columbus East High School	T. Scott Murrain	601/328-2082	820 Browder Street	Columbus	MS	39702
166. Glencoe High School	Joe Rodriguez	503/640-8971	2700 NW Glencoe Road	Hillsboro	OR	97124
175. McKellar Vocational Center	William Self	501/327-0290	810 Browder	Columbus	MS	39702

**OTHER**

**Elementary Schools**

4. Beulah Elementary School Language Arts	Suzanne Angstadt	904/944-0550	6201 Helms Road	Pensacola	FL	32506
9. Bredablik Elementary School Language Arts	Marylou Murphy	206/770-8802	25142 Waghorn Road NW	Poulsbo	WA	98370
30. Edgewater Elementary School Language Development	Virginia Abercrombie	904/455-4567	100 Boeing Street	Pensacola	FL	32507
31. Ellis Elementary School Listening Skills	Roger Wheeler	208/237-4742	11888 North Whitaker Road	Chubbuck	ID	83202
49. Holm Elementary School Language Arts	Mary Stanley	904/494-5610	6101 Lanier Drive	Pensacola	FL	32504

**STUDENT ACADEMIC ACHIEVEMENT GOALS**

84. Oakwood Elementary School Whole Language	Jerry T. Waddoups	208/852-2233	525 South 4th East	Preston	ID	83263
89. Pioneer Elementary School Spelling	Jim Skeesuck	503/262-3902	Route 2	Ontario	OR	97914
103. Skyline Elementary School Language	Skip Gillis	206/596-2270	2301 North Mildrid Street	Tacoma	WA	98406
122. Whittier Elementary School Language Arts	Charles Fuller	406/791-2306	305 8th Street North	Great Falls	MT	59403

**Middle/Junior High Schools**

129. Brownsville Middle School Improve CAT Scores	Thomas Frazier	904/432-1438	1800 North Kirk Street	Pensacola	FL	32505
137. Gault Middle School All Areas	Michael Williams	206/596-1405	1115 East Division Lane	Tacoma	WA	98404
140. Hunt Middle School GPA in All Areas	Bob Lang	206/596-2335	6501 South 10th Street	Tacoma	WA	98465
143. Kate Griffin Junior High School Improve SAT Scores	Martha Walker	601/483-5221	2814 Davis Street	Meridian	MS	39301
144. Kingston Junior High School Relevant Curriculum	Steve Richards	206/297-7070	9000 NE West Kingston Road	Kingston	WA	98346
149. Scio Middle School Communication	Becky Hixson	503/394-3276	38875 NW First Avenue	Scio	OR	97374
152. Warrington Middle School CAT Scores	Richard Messmer	904/453-7440	450 South Old Corry Road	Pensacola	FL	32507
153. West Lowndes Middle School Improve SAT Scores	Millon Fields	601/327-3635	1380 Motley Road	Columbus	MS	39701

**High Schools**

181. Stanfield High School Language Arts	Ivan Ritchie	503/449-3851	1100 North Main	Stanfield	OR	97875
186. Walton Senior High School Student Listening Skills	Cindy Jeselinik	904/892-7224	Route 8, Box 590	DeFuniak Springs	FL	32433

**Multi-Level Schools**

193. Ernest Ward High School Not listed	Jim May	904/327-4283	215 West Garden Street	Pensacola	FL	32506
194. Escambia Westgate Special Ed. Center Community-Based Instruction	Tom Harrell	904/494-5700	10050 Ashton Bros. Mahan Drive	Pensacola	FL	32534



**STUDENT ACADEMIC ACHIEVEMENT GOALS**

195. Freeport High School Academic Performance	Vickie Schofield	904/835-4222	Kylea Laird Drive	Freeport	FL	32439
198. Hope School All Curriculum Areas	Nettie Barnes	904/482-9616	2031 Hope School Drive	Marianna	FL	32446
202. Lowndes County Vocational Complex Vocational Achievement	Don Harding	601/327-7115	664 South Frontage Road	Columbus	MS	39701

## STUDENT BEHAVIOR GOALS

96

### ATTENDANCE

#### High Schools

159. Century High School	Richard Erwin	904/256-3501	700 East Hecker Road	Century	FL	32535
161. Clewiston High School	Kurt Squitier	813/983-6165	1501 South Francisco Street	Clewiston	FL	33440

### DISCIPLINE REFERRALS

#### Elementary Schools

5. Bitterroot Elementary School	Billie Sirissel	406/255-3825	1801 Bench Blvd.	Billings	MT	59105
34. Ferry Pass Elementary School	Ruth Gordon	904/476-3828	8310 North Davis Highway	Pensacola	FL	32514
65. Maude Saunders Elementary School	Hazel Collinsworth	904/892-3581	Route 8, Box 595	DeFuniak Springs	FL	32433
78. New Hope Elementary School	Sammy Townsend	601/327-3801	199 Enlow Drive	Columbus	MS	39702
80. North Douglas Elementary School	Dorothy Keachi	503/836-2213	PO Box 338	Drain	OR	97435
86. Philomath Elementary School	Rod Harvey	503/929-3253	PO Box 71	Philomath	OR	97370
105. Solomon Elementary School	Stan Razak	913/655-2521	PO Box 325	Solomon	KS	67480
106. Spencer Bibbs Elementary School	Malachi Williams	904/444-2427	2005 North 6th Avenue	Pensacola	FL	32503
110. Swegle Elementary School	Michele Beal-Evans	503/399-3191	4485 Market Street NE	Salem	OR	97301

#### Middle/Junior High Schools

127. Brentwood Middle School	Mary Helen Fryman	904/434-5640	201 East Hancock Lane	Pensacola	FL	32501
136. Ferry Pass Middle School	Bill Fillingim	904/494-5650	2355 Yancey Avenue	Pensacola	FL	32514
147. Molalla Grade School	Julie Clark	503/829-6133	PO Box 225	Molalla	OR	97038
150. Waldport Middle School	Beau Horn	503/563-3235	PO Box 839	Waldport	OR	97394

#### High Schools

164. Escambia High School	Larry Huntley	904/453-3221	1310 North 65th Avenue	Pensacola	FL	32529
178. Pine Forest High School	Robin Largue	904/944-1121	1000 Longleaf Drive	Pensacola	FL	32526

#### Multi-Level Schools

191. Corbett High School	Jim Kuhlmann	503/695-3600	35800 East Crown Point Highway	Corbett	OR	97019
206. Sidney Nelson Middle High School	Michelle Kaczynski	904/968-1255	648 Muscogee Road	Cantonment	FL	32533

106

**STUDENT BEHAVIOR GOALS**

**RESPONSIBLE LEARNER**

**Middle/Junior High Schools**

132. Chapman Middle School      John Sanborn      913/922-655      622 North Marshal      Chapman      KS      67431

**High Schools**

179. Quiwira Heights High School      Lloyd Holmes      316/562-3597      500 South Main; RR#1      Bushion      KS      67427

**Multi-Level Schools**

201. Lost River High School      William Willey      503/798-5666      23330 Highway 50      Merrill      OR      97C33

**OTHER**

**Elementary Schools**

52. Independence Elementary School      Laticia Antonson      503/838-1322      150 South 4th Street      Independence      OR      97351  
Improved School-Home Communication  
67. McCarver Elementary School      Dorothy Dedrick      206/596-1390      2111 South J Street      Tacoma      WA      98405  
Reducing Classroom Disruptio ns  
81. Nyssa Elementary School      Dan Weeks      503/372-3313      1 North 7th Street      Nyssa      OR      97913  
At-Risk Behavior  
116. West DeFuniak Elementary School      David Drake      904/892-2713      1900 West Lincoln Avenue      DeFuniak Springs      FL      32433  
Lunchroom Behavior

**STUDENT ATTITUDE GOALS**

**SELF AS LEARNER**

**Elementary Schools**

48. Herington Elementary School	Lawrence Killer	913/258-3234	201 East Hawley	Herington	KS	67449
61. Longleaf Elementary School	Ernest Thorne	904/944-0043	2600 Longleaf Drive	Pensacola	FL	32526

**High Schools**

160. Chapman High School	Dick Hall	913/922-6561	400 West 4th Street	Chapman	KS	67431
--------------------------	-----------	--------------	---------------------	---------	----	-------

**Multi-Level Schools**

190. Bennington Elementary School	Bill Becker	913/488-3323	223 North Putnam Street	Bennington	KS	67422
-----------------------------------	-------------	--------------	-------------------------	------------	----	-------

**SCHOOL AS PLACE TO LEARN**

**Elementary Schools**

1. Allie Yniestra Elementary School	Janice Monks	904/444-2795	2315 West Jackson Street	Pensacola	FL	32526
58. Lincoln Elementary School	Dean Collins	913/524-4487	302 South 4th	Lincoln	KS	67455
70. Molalla Grade School	Jim Swan	503/829-6133	PO Box 225	Molalla	OR	97038
79. North Albany Elementary School	Diane Stevers	503/967-4588	815 NW Thornton Lake Drive	Albany	OR	97321

**Middle/Junior High Schools**

141. J. W. Poynter Junior High School	Ken Wellman	503/640-4604	645 NE Lincoln Street	Hillsboro	OR	97124
---------------------------------------	-------------	--------------	-----------------------	-----------	----	-------

**Multi-Level Schools**

188. Alternative High School	Gary White	913/826-4680	2640 Scanlon	Salina	KS	67401
207. Solomon Junior/Senior High School	Steve Wolf	913/655-2551	400 North Walnut	Solomon	KS	67480



## STUDENT ATTITUDE GOALS

99

### OTHER

#### Elementary Schools

29. Edahow Elementary School Playground Behavior	Helen Whitmore	208/233-1844	2020 Pocatello Creek Road	Pocatello	ID	83201
95. Roosevelt Elementary School Student Self-Concept	Donald Kvamme	206/596-1410	3550 East Roosevelt Avenue	Tacoma	WA	98404
117. West End/Harris Elementary School At-Risk Students	Lavon Fluker-Reed	601/482-7171	3930 14th Street	Meridian	MS	39301
120. West Pensacola Elementary School Reading Attitude	Lynwood Kent	904/455-0111	801 North 49th Avenue	Pensacola	FL	32506

#### Middle/Junior High Schools

126. Bellview Middle School Attitude Toward School Work	Eugene Pettis		6201 Mobile Highway	Pensacola	FL	32514
130. Castlerock Middle School Respect	Peggy Parker	406/255-3710	1441 Governors Blvd.	Billings	MT	59105
133. Chief Joseph Middle School Advisory Program	Anne K. Olson	406/585-1610	309 North 11th Avenue	Bozeman	MT	59715

#### High Schools

169. Kamloops Senior Secondary School  
Respect Teachers

Keith Meakins	604/374-1405	821 Monroe Street	Kamloops	BC	V2C 3E9
---------------	--------------	-------------------	----------	----	---------

#### Multi-Level Schools

203. Paxton School Not listed	Virginia Pridgen	904/834-2111	PO Box 1168	Paxton	FL	32538
208. Tescott Elementary School Self-Image	Martin Helmer	913/283-4774	305 North Minnesota Street	Tescott	KS	67484

111

112

BEST COPY AVAILABLE